

# DUMPSBOSS.

## Brocade Certified Network Engineer 2012

Brocade 150-130

Version Demo

Total Demo Questions: 10

Total Premium Questions: 113

Buy Premium PDF

<https://dumpsboss.co>

[support@dumpsboss.co](mailto:support@dumpsboss.co)

support@dumpsboss.co  
dumpsboss.co

**QUESTION NO: 1**

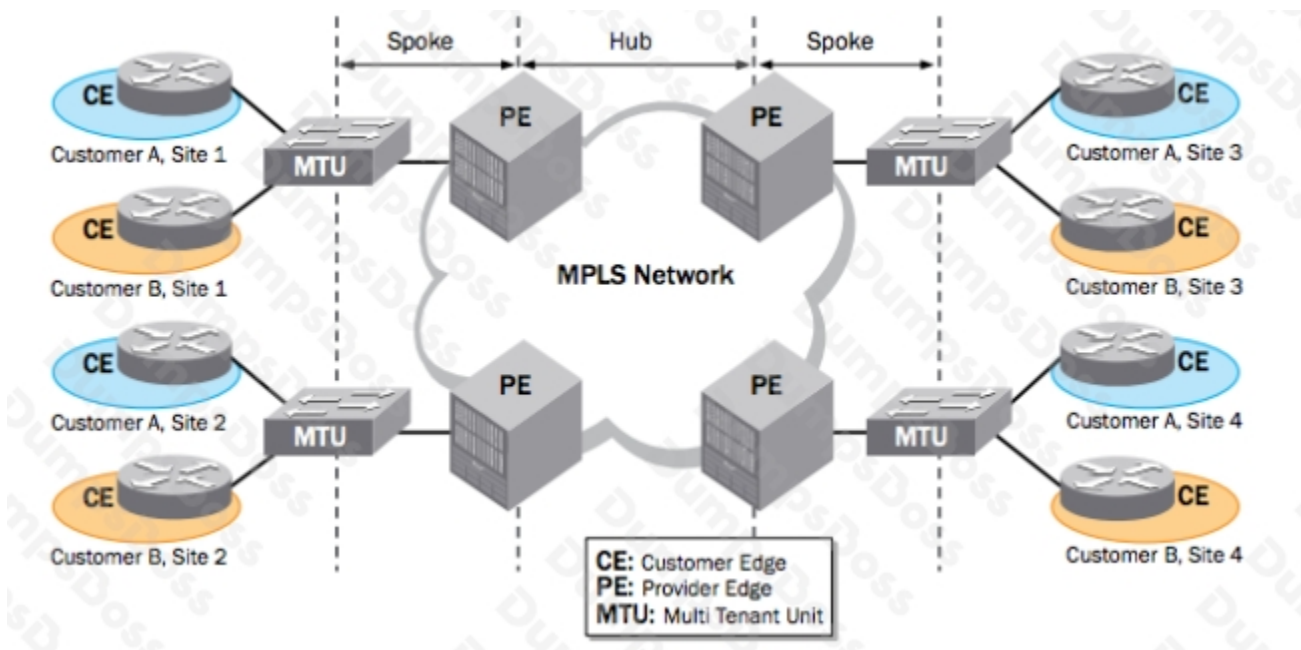
Which three network ranges did IETF allocate to be used as IPv4 private networks? (Choose three.)

- A. 10.0.0.0/3
- B. 192.168.0.0/16
- C. 172.16.0.0/16
- D. 172.16.0.0/12
- E. 192.168.0.0/24

**ANSWER: A B D**

**QUESTION NO: 2**

Exhibit as:



Which technology allows a service provider the ability to connect customer sites with duplicate tagged VLAN configurations across the same circuit as shown in the exhibit?

- A. dual-mode
- B. 802.1q
- C. untagged

D. Q-in-Q

**ANSWER: D**

## QUESTION NO: 3

Which two protocols would be used to transfer new code to a Brocade FastIron, TurboIron, or NetIron device? (Choose two.)

- A. FTP
- B. TFTP
- C. SFTP
- D. SCP

**ANSWER: B D**

## QUESTION NO: 4

You have been informed a group of remote employees are unable to authenticate with the RADIUS server. From the Brocade FCX router, you enable the debug dot1x events command.

Which three events will be viewed? (Choose three.)

- A. authentications failed
- B. authentications succeeded
- C. ACLs requested by the RADIUS server.
- D. standard ACL requests
- E. extended ACL requests

**ANSWER: A B C**

## QUESTION NO: 5

Which three types of network addresses are supported in IPv6? (Choose three.)

- A. multicast
- B. broadcast
- C. anycast
- D. unicast

E. ANAT

**ANSWER: A C D**

## **QUESTION NO: 6**

You have inherited the routing redundancy configuration shown in the exhibit. Router A is the current VRRP-E master. Your network is not failing over to router B. What needs to be added to configure router B as a backup and maintain the current master?

```
outer1(config)# router vrrp-extended
Router1(config)# interface ethernet 1/6
Router1(config-if-1/6)# ip address 192.53.5.2/24
Router1(config-if-1/6)# ip vrrp-extended vrid 1
Router1(config-if-1/6-vrid-1)# backup priority 110 track-priority 20
Router1(config-if-1/6-vrid-1)# track-port ethernet 2/4
Router1(config-if-1/6-vrid-1)# ip-address 192.53.5.254
Router1(config-if-1/6-vrid-1)# activate
```

```
VRRP router 1 for this interface is activating
Router1(config-if-1/6-vrid-1)# exit
Router1(config)# interface ethernet 1/6
Router1(config-if-1/6)# ip vrrp-extended vrid 2
Router1(config-if-1/6-vrid-1)# backup priority 100 track-priority 20
Router1(config-if-1/6-vrid-1)# track-port ethernet 2/4
Router1(config-if-1/6-vrid-1)# ip-address 192.53.5.253
Router1(config-if-1/6-vrid-1)# activate
VRRP router 2 for this interface is activating
```

```
Router2(config)# router vrrp-extended
Router2(config)# interface ethernet 5/1
Router2(config-if-5/1)# ip address 192.53.5.3/24
Router2(config-if-5/1)# ip vrrp-extended vrid 1
Router2(config-if-5/1-vrid-1)# backup priority 100 track-priority 20
Router2(config-if-5/1-vrid-1)# track-port ethernet 3/2
Router2(config-if-5/1-vrid-1)# ip-address 192.53.5.254
Router2(config-if-5/1-vrid-1)# activate
VRRP router 1 for this interface is activating
Router2(config-if-5/1-vrid-1)# exit
Router2(config)# interface ethernet 5/1
Router2(config-if-5/1)# ip vrrp-extended vrid 2
Router2(config-if-5/1-vrid-1)# backup priority 110 track-priority 20
Router2(config-if-5/1-vrid-1)# track-port ethernet 2/4
Router2(config-if-5/1-vrid-1)# ip-address 192.53.5.253
Router2(config-if-5/1-vrid-1)# activate
VRRP router 2 for this interface is activating
```

- A. backup priority 100 track-priority 20
- B. backup priority 110 track-priority 20
- C. backup priority 120 track-priority 20

D. backup priority 130 track-priority 20

**ANSWER: A**

## QUESTION NO: 7

Given the command output shown below:

```
de(config)#mirror-port ethernet 1/2/4
```

```
Brocade(config)#interface ethernet 1/2/11
```

```
Brocade(config-if-e100-11)#monitor ethernet 1/2/4 both
```

What do the Brocade commands accomplish?

- A. They allow all traffic on interface ethernet 1/2/11 to be replicated on interface ethernet 1/2/4 for analysis
- B. They allow ingress only traffic on interface ethernet 1/2/4 to be replicated on interface Ethernet 1/2/11 for analysis.
- C. They allow all traffic on interface ethernet 1/2/4 to be replicated on interface ethernet 1/2/11 for analysis.
- D. They allow egress only traffic on interface ethernet 1/2/4 to be replicated on interface Ethernet 1/2/11 for analysis.

**ANSWER: A**

## QUESTION NO: 8

When using CIDR notation, what is the default route in an IPv6 configuration?

- A. ::/0
- B. 1001:ffff:0:0:0:0::V128
- C. 1001:ffff:0:0:0:0::y0
- D. fff::/36

**ANSWER: A**

## QUESTION NO: 9

What are two valid ways to represent the IPv6 address 2001:0000:0000:0200:002D:D0FF:FE48:4672? (Choose two.)

- A. 2001::02:002D:D0FF:FE48:4672
- B. 2001:0:0:0200:002D:D0FF:FE48:4672
- C. 2001::0200:002D:D0FF:FE48:4672

D. 21::0200:002D:D0FF:FE48:4672

**ANSWER: B C**

## QUESTION NO: 10

You want to classify and mark traffic at the edge of your network before it is sent to the core and routed where Layer 3 QoS is trusted and enabled. Which type of marking should you configure to ensure your application traffic is serviced correctly in the core of your network?

- A. Mark the 802.Ip field according to application priority
- B. Mark the PCP field according to application priority
- C. Mark the EXP field according to application priority
- D. Mark the DSCP field according to application priority

**ANSWER: D**