

DUMPSBOSS.

Deploying Citrix XenDesktop 7.6 Solutions

Citrix 1Y0-301

Version Demo

Total Demo Questions: 10

Total Premium Questions: 112

Buy Premium PDF

<https://dumpsboss.co>

support@dumpsboss.co

support@dumpsboss.co
dumpsboss.co

Topic Break Down

Topic	No. of Questions
Topic 1, Pre-installation Considerations	18
Topic 2, Installing required technologies	21
Topic 3, Configuring technical components	59
Topic 4, Testing configurations	6
Topic 5, SIMULATION QUESTIONS	8
Total	112

QUESTION NO: 1

A Citrix Engineer is in the process of setting up a remote access solution using self-signed certificates.

To help ensure a secure remote connection, the engineer must install a Root certificate on the _____ and _____ . (Choose the two correct options to complete the sentence.)

- A. endpoint device
- B. StoreFront server
- C. Domain Controllers
- D. Delivery Controllers

ANSWER: A B

QUESTION NO: 2

Which two steps are required in order to set up the Universal Print Server in a XenDesktop environment? (Choose two.)

- A. Enable the Universal Print Server through a policy.
- B. Install the Universal Print Server on the Delivery Controllers.
- C. Install the Universal Print Server on a Windows Print Server.
- D. Enable 'Auto-creation of generic universal printer' through a policy.
- E. Enable 'Automatic installation of in-box printer drivers' through a policy.

ANSWER: A C

QUESTION NO: 3

What is required by NetScaler Gateway when enabling remote access in a XenDesktop deployment?

- A. An LDAP bind account
- B. A connection URL to the hypervisor
- C. A root certificate from the internal CA
- D. The IP address of the RDS License Server

ANSWER: A

QUESTION NO: 4

Which file should a Citrix Engineer update when adding an additional Provisioning Services server to a network boot-enabled environment?

- A. TFTP64.ini
- B. PVSBP32.ini
- C. ARDBP32.bin
- D. VLDRMI13.bin

ANSWER: C

QUESTION NO: 5

Scenario: A Citrix Engineer needs to create a device collection of new vGPU-enabled virtual desktops in Provisioning Services. The collection needs to be made available as part of an existing machine catalog in Citrix Studio.

Which wizard should the engineer run to accomplish this task?

- A. Import Device Wizard
- B. XenDesktop Setup Wizard
- C. Create Machine Catalog Wizard
- D. Provisioning Services Configuration Wizard

ANSWER: B

QUESTION NO: 6

Scenario: NFS is implemented as the storage repository type in a XenServer proof-of-concept. One requirement for the production environment shared storage solution is that it should provide high availability.

Which two storage technologies should a Citrix Engineer consider for production use? (Choose two.)

- A. CIFS
- B. iSCSI
- C. Local SSD
- D. Fibre Channel

ANSWER: A C

QUESTION NO: 7

Which Group Policy setting should a Citrix Engineer set during the installation of Provisioning Services (PVS) to help prevent trust relationship failures between PVS targets and the Active Directory domain?

- A. Enable Windows NTP Client
- B. Disable NTLMv2 authentication
- C. Disable machine account password changes
- D. Allow cryptography algorithms compatible with Windows NT 4.0

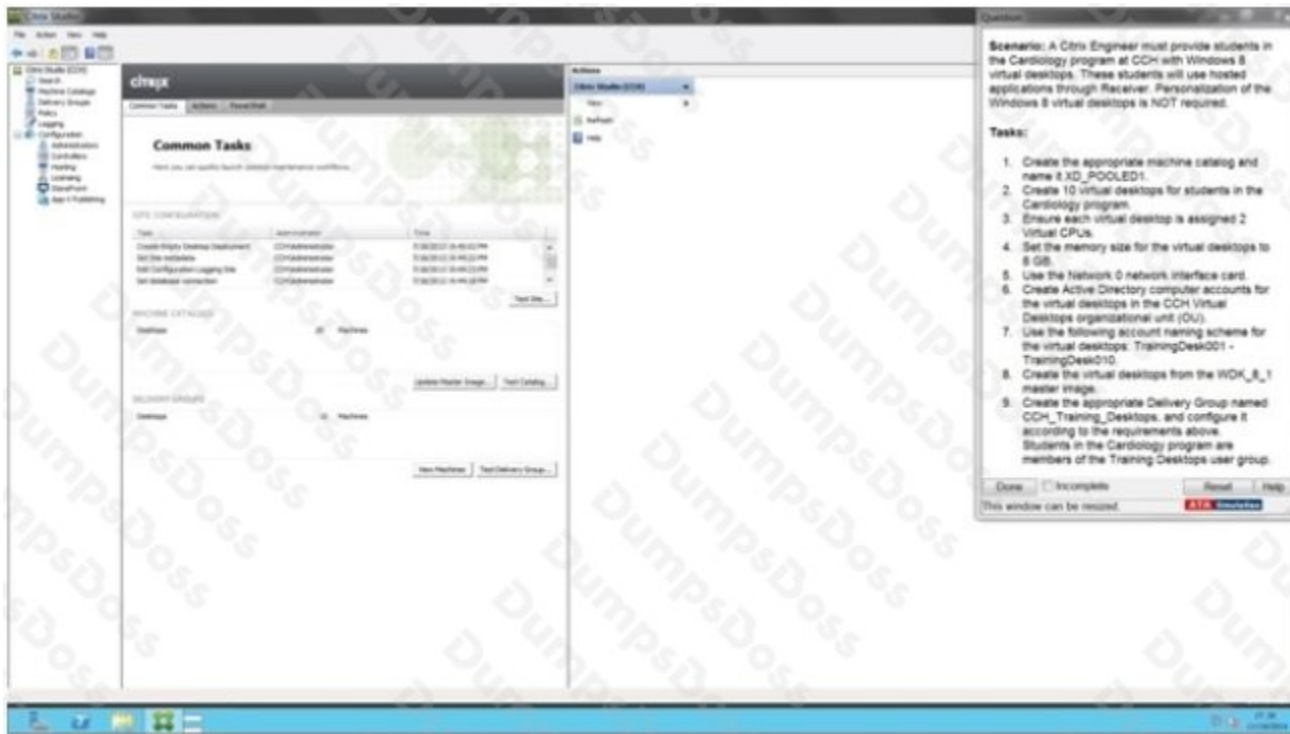
ANSWER: C

QUESTION NO: 8 - (SIMULATION)

Scenario: A Citrix Engineer must provide students in the Cardiology program at CCH with Windows 8 virtual desktops. These students will use hosted applications through Receiver. Personalization of the Windows 8 virtual desktops is NOT required.

Tasks:

1. Create the appropriate machine catalog and name it XD_POOLED 1.
2. Create 10 virtual desktops for students in the Cardiology program.
3. Ensure each virtual desktop is assigned 2 Virtual CPUs.
4. Set the memory size for the virtual desktops to 8 GB.
5. Use the Network 0 network interface card.
6. Create Active Directory computer accounts for the virtual desktops in the CCH Virtual Desktops organizational unit (OU).
7. Use the following account naming scheme for the virtual desktops: TrainingDesk001 – TrainingDesk010.
8. Create the virtual desktops from the WDK_8_1 master image.
9. Create the appropriate Delivery Group named CCH_Training_Desktops, and configure it according to the requirements above. Students in the Cardiology program are members of the Training Desktops user group.

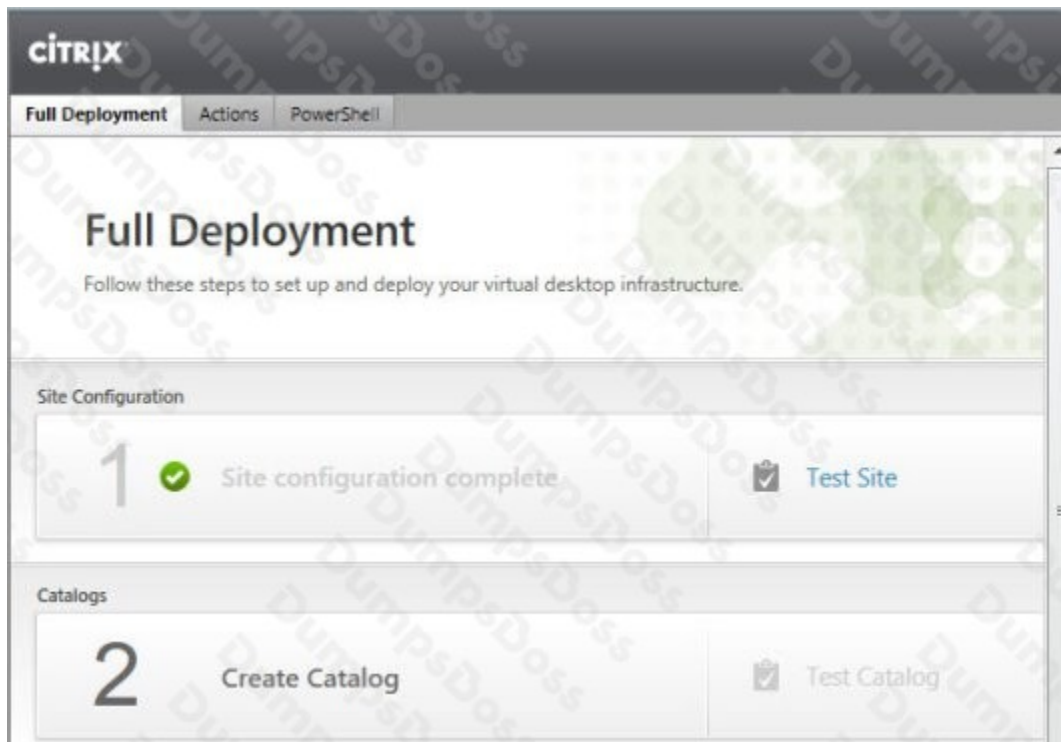


Answer: Find the solution with all steps below.

Explanation:

XenDesktop 7 Machine Catalog

1. In Desktop Studio we want to create a VM catalog,



2. Choose the OS type



3. We will be using VMs and Citrix Machine Creation Services, so the defaults are fine.

Machine Management

As part of creating a Machine Catalog, the way you plan to provision machines influences the recommended Machine Catalog type.

[Learn more](#)

This infrastructure will be built using:

- Virtual machines
- Physical hardware

Desktop images are managed using:

- Machine Creation Services (MCS)
- Provisioning Services (PVS)
- Another service or technology

I will manage my desktop images with something other than Citrix technology. I have existing Master Images already prepared.

4. Use the default

Desktop Experience

Consider the tasks your users perform and then decide which desktop experience would be best.

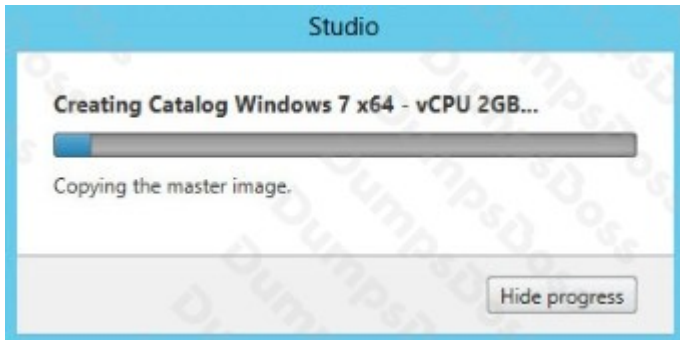
Which desktop experience do you want users to have?

- I want users to connect to a new (random) desktop each time they log on.
- I want users to connect to the same (static) desktop each time they log on.

Do you want to save any changes that the user makes to the desktop?

- Yes, save changes on a separate Personal vDisk.
- Yes, create a dedicated virtual machine and save changes on the local disk.
- No, discard all changes and clear virtual desktops when the user logs off.
If configured, folder redirection will not be affected.

5. Choose the master image WDK_8_1 master image



10. When the provisioning is completed you now have one machine catalog entry



11. If you double click on the machine catalog it will bring up a search window with the individual VMs listed. You can now power them on and wait for them to show a "registered" status. If you click on an individual VM it will pull up even more details. If a user had an active session to the VM then you get a plethora more data.

The screenshot shows the Citrix Desktop Studio interface. At the top, there's a search bar with the text "Search results for '(Machine Catalog Is \"Windows 7 x64 - vCPU 2GB\")'". Below this, there's a table with columns: Name, Machine Catalog, Delivery Gro..., User, Maintenanc..., Persist User..., Power State, and Registration... The table lists two machines: VDI-NS-W7-01.contoso.net and VDI-NS-W7-02.contoso.net. Below the table, there's a "Details" section for VDI-NS-W7-01.contoso.net, which is divided into "Machine" and "Session" information.

Name	Machine Catalog	Delivery Gro...	User	Maintenanc...	Persist User...	Power State	Registration...
VDI-NS-W7-01.contoso.net	Windows 7 x6...	-	-	Off	Discard	On	Registered
VDI-NS-W7-02.contoso.net	Windows 7 x6...	-	-	Off	Discard	On	Registered

Machine		Session	
Machine:	VDI-NS-W7-01.contoso.net	Current User:	-
Power State:	On	Protocol:	-
Registration:	Registered	Session type:	Desktop
Delivery Group:	-	Time in State:	-
Machine Catalog:	Windows 7 x64 - vCPU 2GB	Client Name:	-
Connection:	vSphere51	Client Address:	-
IP Address:	-	Launched Via IP:	-
Agent Version:	7.0.0.3018	Connected Via:	-
Profile Definition:	-		
StoreFronts:	-		

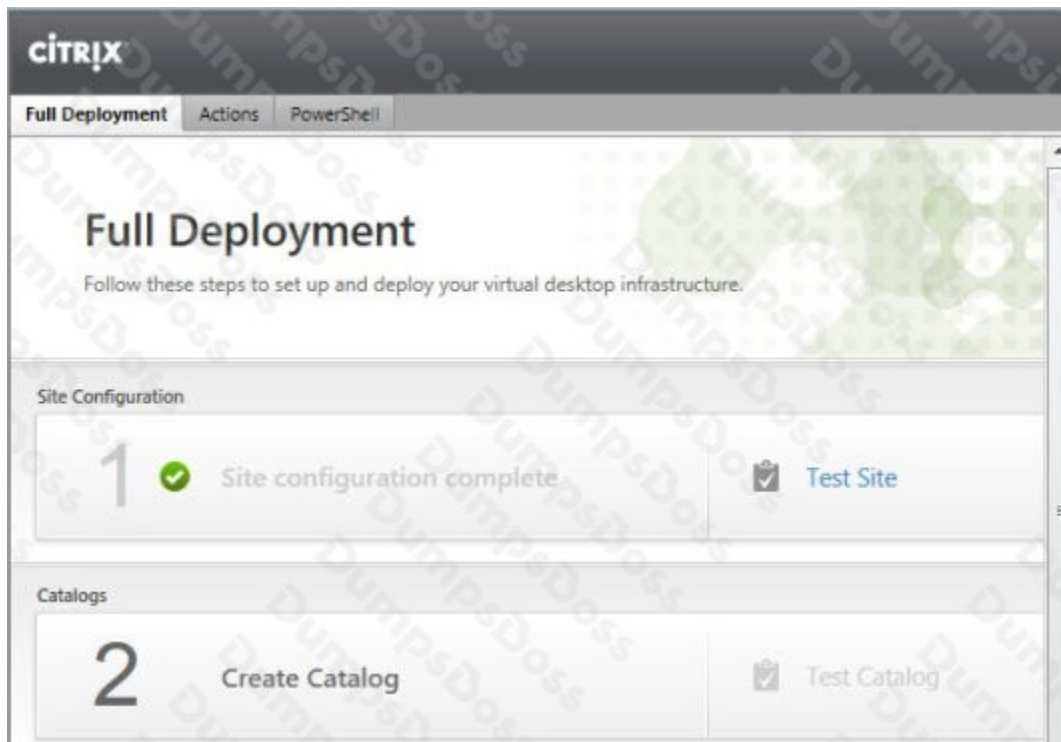
As you can see, creating a machine catalog from a master template is quick and easy. Within Desktop Studio you can view a tremendous amount of detail about the catalog and individual VMs.

ANSWER: See Explanation Below For Answer

Explanation:

XenDesktop 7 Machine Catalog

1. In Desktop Studio we want to create a VM catalog,



2. Choose the OS type



3. We will be using VMs and Citrix Machine Creation Services, so the defaults are fine.

Machine Management

As part of creating a Machine Catalog, the way you plan to provision machines influences the recommended Machine Catalog type.

[Learn more](#)

This infrastructure will be built using:

- Virtual machines
- Physical hardware

Desktop images are managed using:

- Machine Creation Services (MCS)
- Provisioning Services (PVS)
- Another service or technology

I will manage my desktop images with something other than Citrix technology. I have existing Master Images already prepared.

4. Use the default

Desktop Experience

Consider the tasks your users perform and then decide which desktop experience would be best.

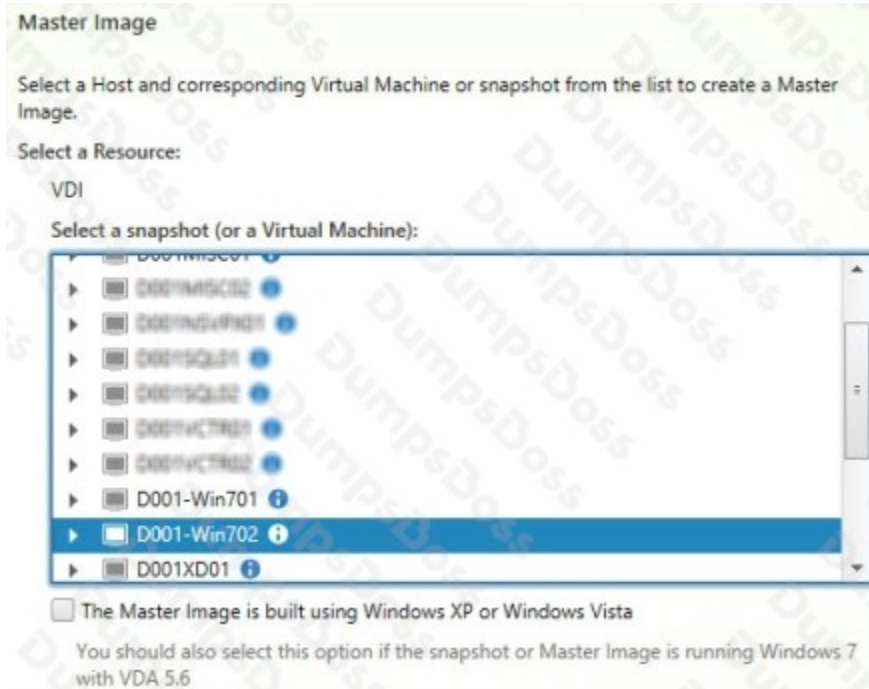
Which desktop experience do you want users to have?

- I want users to connect to a new (random) desktop each time they log on.
- I want users to connect to the same (static) desktop each time they log on.

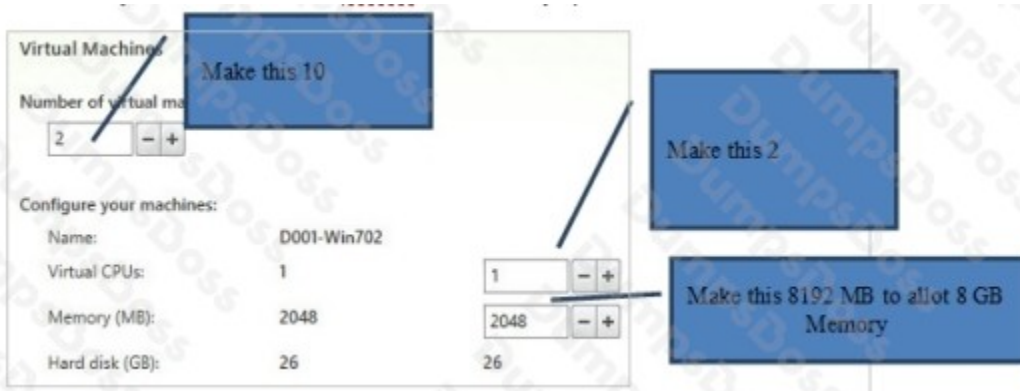
Do you want to save any changes that the user makes to the desktop?

- Yes, save changes on a separate Personal vDisk.
- Yes, create a dedicated virtual machine and save changes on the local disk.
- No, discard all changes and clear virtual desktops when the user logs off.
If configured, folder redirection will not be affected.

5. Choose the master image WDK_8_1 master image



6. A great feature of XenDesktop is the ability to customize the catalog hardware at provisioning time, so you can offer different tiers of VMs from the exact same master image. No need to build up templates with the same OS and software stack, just to customize the vCPUs and memory specs.



7. OU –

CCH Virtual Desktops

Machine Names –

TrainingDesk001 - TrainingDesk010

Active Directory Computer Accounts

Each machine in a Machine Catalog needs a corresponding Active Directory computer account.

[Learn more](#)

Select an Active Directory account option:

- Create new Active Directory accounts
- Use existing Active Directory accounts

Active Directory location for computer accounts:

Domain:

- Computers
 - Member Servers
 - VDI
 - Managed Service Accounts

Selected location:

Account naming scheme:

VDI-NS-W7-01

8. On the summary screen you need to give the catalog a name and a description.

Summary

Machine type:	Windows Desktop OS
Machine management:	Virtual
Provisioning method:	Machine creation services (MCS)
Desktop experience:	Users connect to a new desktop each time they log on
Resources:	VDI
Master Image name:	D001-W7-1 x64-1 vCPU 2GB
Number of VMs to create:	2
Virtual CPUs:	1

Machine Catalog name:

Machine Catalog description for administrators: (Optional)

Note: To complete the deployment, assign this machine catalog to a Delivery Group by selecting Delivery Groups and then Create or Edit a Delivery Group.

Change this per the Simulation to XD_POOLED1

9. After you kick off the provisioning process you get a nice status. MCS first makes a copy of your master VM, then does its magic to create copies



10. When the provisioning is completed you now have one machine catalog entry



11. If you double click on the machine catalog it will bring up a search window with the individual VMs listed. You can now power them on and wait for them to show a "registered" status. If you click on an individual VM it will pull up even more details. If a user had an active session to the VM then you get a plethora more data.

The screenshot shows the Citrix Desktop Studio interface. At the top, there's a search bar with the text '<Unsaved>' and a dropdown menu for 'Saved searches'. Below this, a search results header reads 'Search results for '(Machine Catalog Is "Windows 7 x64 - vCPU 2GB")'. The main area is divided into three tabs: 'Desktop OS Machines (2)', 'Server OS Machines (0)', and 'Sessions (0)'. The 'Desktop OS Machines (2)' tab is active, showing a table with columns: Name, Machine Catalog, Delivery Gro..., User, Maintenanc..., Persist User..., Power State, and Registration... Two machines are listed: VDI-NS-W7-01.contoso.net and VDI-NS-W7-02.contoso.net. Below the table, the 'Details - VDI-NS-W7-01.contoso.net' section is open, showing 'Details' and 'Administrators' tabs. The 'Details' tab displays two columns: 'Machine' and 'Session'. The 'Machine' column lists properties like Machine, Power State, Registration, Delivery Group, Machine Catalog, Connection, IP Address, Agent Version, Profile Definition, and StoreFronts. The 'Session' column lists properties like Current User, Protocol, Session type, Time in State, Client Name, Client Address, Launched Via IP, and Connected Via.

As you can see, creating a machine catalog from a master template is quick and easy. Within Desktop Studio you can view a tremendous amount of detail about the catalog and individual VMs.

QUESTION NO: 9

Which two Windows components can be selected using the Provisioning Services Device Optimization Tool? (Choose two.)

- A. Search
- B. Firewall
- C. SuperFetch
- D. Screen Saver
- E. TCP/IP Offload

ANSWER: A C

QUESTION NO: 10

Scenario: A corporate security policy prohibits the creation of domain accounts unless absolutely necessary. During the deployment of XenDesktop, a Citrix Engineer created a new SQL site database.

Which account type should the engineer use to grant permission on the SQL site configuration database for production use?

- A. SQL account

- B. Domain service account
- C. Local account on Delivery Controllers
- D. Delivery Controller computer accounts

ANSWER: D