

# DUMPSBOSS.

## Managing Citrix XenDesktop 7.6 Solutions

Citrix 1Y0-201

Version Demo

Total Demo Questions: 10

Total Premium Questions: 129

Buy Premium PDF

<https://dumpsboss.co>

[support@dumpsboss.co](mailto:support@dumpsboss.co)

support@dumpsboss.co  
dumpsboss.co

## Topic Break Down

Topic	No. of Questions
Topic 1, Managing a Citrix XenDesktop 7.6 Solution	41
Topic 2, Maintaining a Citrix XenDesktop 7.6 Solution	19
Topic 3, Monitoring a Citrix XenDesktop 7.6 Solution	20
Topic 4, Troubleshooting a Citrix XenDesktop 7.6 Solution	42
Topic 5, Simulation Questions	7
<b>Total</b>	<b>129</b>

## QUESTION NO: 1 - (SIMULATION)

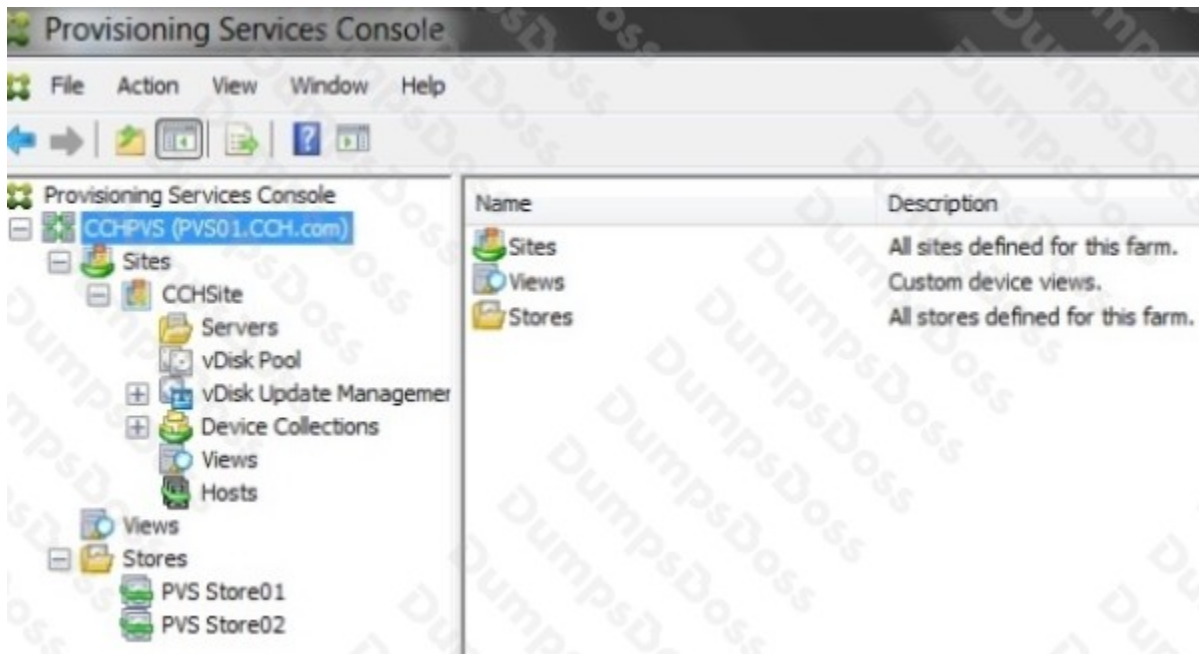
Scenario: Members of the HR user group at CCH need access to desktops running Windows 8. The desktops provided to HR users must be in a separate device collection named HR. As part of a pilot, a Citrix Administrator must use the Provisioning Services Console to create the device collection and initially four target devices with plans to add 20 more. The target devices named Win801T Win802. Win803 and Win804 should be assigned the CCH\_Win8 vDisk and those devices should be assigned to the HR OU. XenDesktop is NOT being used for the HR team at the moment.

The hypervisor information for the environment is:

- XenServer IP Address: 192.168.10.5
- Username: root
- Password: Password 1

Tasks:

1. Create a device collection named HR.
2. Create four target devices named Win801, Win802. Win803 and Win804, and add the target devices to the HR device collection.
3. Ensure the target devices are configured to meet the requirements outlined in the scenario.



**ANSWER: See Explanation Below For Answer**

**Explanation:**

- 1) In Provisioning Services Console, right click on "Device" and click on Create Device Collection.

- 2) In the "General" type in the name "HR" and click on OK.
- 3) Right click on "CCHSite" node and select Streamed Virtual Machine Setup.
- 4) From the "Hypervisor connection" dialog window type in the Hypervisor IP address, username and password provided then click on Next.
- 5) From the "Virtual machine template" dialog window select the correct virtual machine template then click on Next.
- 6) From the "vDisk" dialog window select CCH\_Win8 then click on Next.
- 7) From the "Collection" dialog window select HR from the drop-down window then click on Next.
- 8) From the "Virtual Machines" dialog window, increase the "Number of virtual machines to create" to 4 then click on Next.
- 9) From the "Active Directory" dialog window verify "Create new accounts" is selected then click on Next.
- 10) From the "Active Directory accounts and location" dialog windows select the HR OU; in the "Account naming scheme" field type in the "Basename#" of Win8##, select 0-9 from the drop down to the right, then click on Next.
- 11) From the "Summary" dialog windows click on Finish.
- 12) When the devices are finished creating click on Done.
- 13) You can verify the new devices were created correctly in the HR Device Collection you created initially.

## QUESTION NO: 2

Scenario: Auto-created client printers are enabled within a XenDesktop deployment. A Citrix Administrator receives complaints from users of the Finance group who say they do NOT have the option to print to tray three on their default printer. The administrator decides to implement session printing for only the Finance users to resolve this issue.

Which two steps should the administrator take to meet the requirements of the scenario? (Choose two.)

- A. Enable legacy client printer names.
- B. Configure network printers on the client device.
- C. Disable automatic installation of in-box printer drivers.
- D. Install the printer drivers on the Desktop OS machine.
- E. Configure a session printer policy within Citrix policies.

**ANSWER: A E**

## QUESTION NO: 3

Scenario: A user needs two Desktop OS machines from the same group open at once. When the user attempts to launch a second Desktop OS machine, the first Desktop OS machine closes and another is launched.

What could a Citrix Administrator edit to resolve this issue?

- A. Properties of the Delivery Group

- B. Web.config file on the StoreFront server
- C. Properties of the Desktop OS machine catalog
- D. Virtual Delivery Agent settings on the Desktop OS machines

**ANSWER: D**

## QUESTION NO: 4

A Citrix Administrator needs to configure email alerts on performance threshold events for a XenServer resource pool.

Which three types of XenServer alerts could the administrator set in XenCenter? (Choose three.)

- A. Disk usage
- B. CPU usage
- C. Memory usage
- D. Network usage
- E. Storage I/O usage

**ANSWER: B C D**

## QUESTION NO: 5 - (SIMULATION)

Scenario: CCH acquired Xirtic, and a Citrix Administrator has created a domain trust between the two organizations. Xirtic has an existing XenDesktop deployment, which consists of a site named Xirtic and one Delivery Controller named XRT01. A Citrix Administrator is tasked with integrating Xirtic's XenDesktop deployment into CCH's XenDesktop deployment. Within CCH's environment, communication to and from XRT01 must go over HTTP and must use port 80.

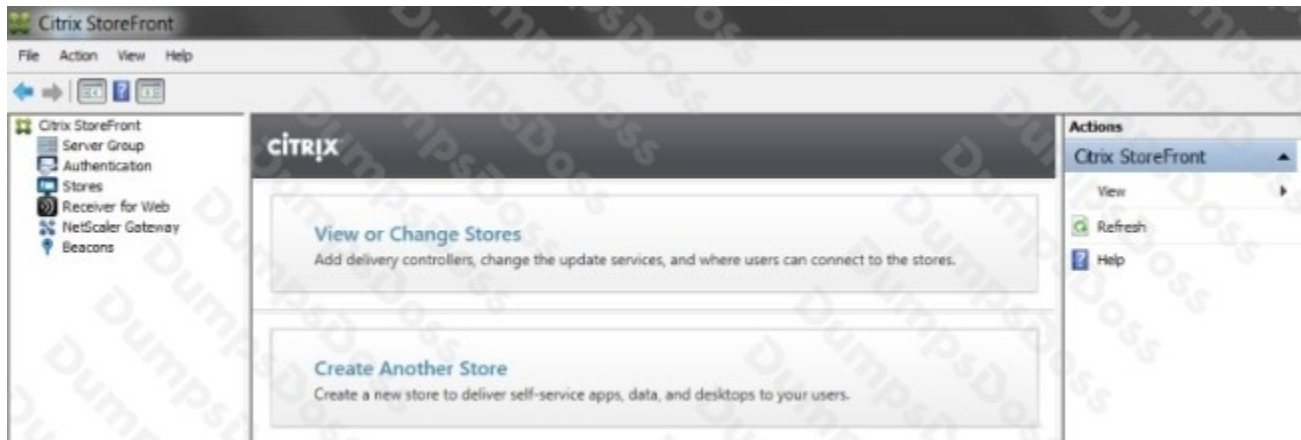
At the moment, both Xirtic and CCH users log into their respective environments by entering their domains and usernames, for example: domain\username. The administrator has been instructed to ensure users can log in using their usernames only or without the need to authenticate when using Citrix Receiver when possible.

Note the following:

- If a new store is created, the display name of the Delivery Controller in the new store should be "Xirtic".
- If a new Delivery Controller is added to the existing store, the display name of the new Delivery Controller should be "Xirtic".
- If the Delivery Controller setting in the existing store is modified to merge the CCH and Xirtic Delivery Controllers, the display name of the Delivery Controller should be "Xirtic".
- All systems in the CCH environment are members of the CCH domain.
- All systems in the Xirtic environment are members of the Xirtic domain.
- Use hostnames only when configuring settings in this simulated environment; do not assume the FQDN.

## Tasks:

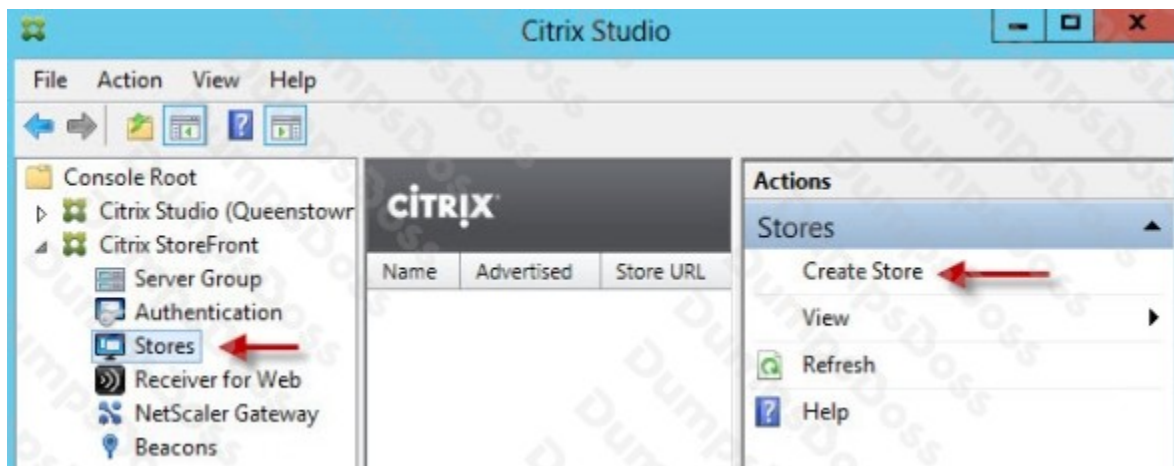
1. Configure StoreFront to integrate Xirtic's environment into the CCH environment.
2. Configure user access to meet the requirements outlined in the scenario.



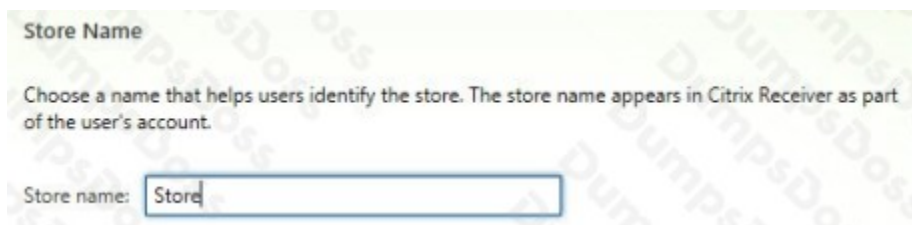
**ANSWER: See Explanation Below For Answer**

## Explanation:

Citrix StoreFront Configuration



- 1) When the wizard starts enter a store name.



- 2) Now we need to add the delivery controllers (Controller1) that StoreFront will interface with

**Add Delivery Controller**

Display name:

Type:  XenDesktop  
 XenApp  
 AppController  
 VDI-in-a-Box

Servers (in failover order):

Transport type:

Port:

Add Xirtic here along with Controller1, please use hostname only and not FQDN

**Remote Access**

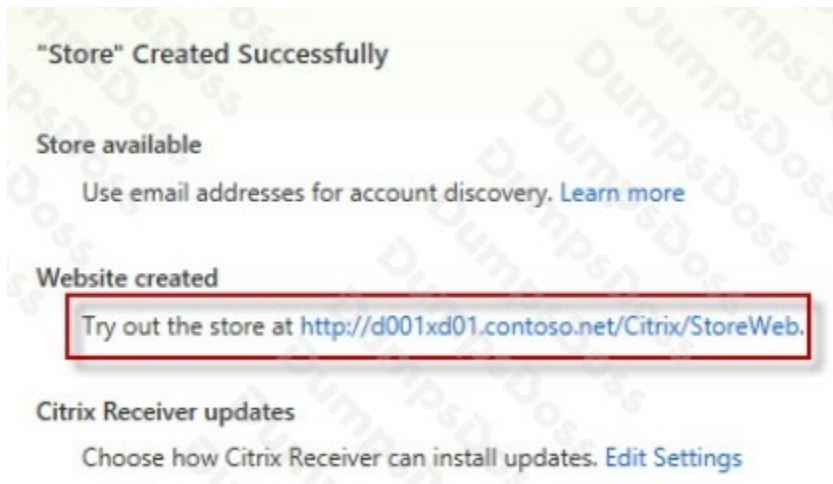
Add NetScaler Gateway appliances to provide user access from external networks.

Remote access:  None  
 No VPN tunnel ⓘ  
 Full VPN tunnel ⓘ

NetScaler Gateway appliances:

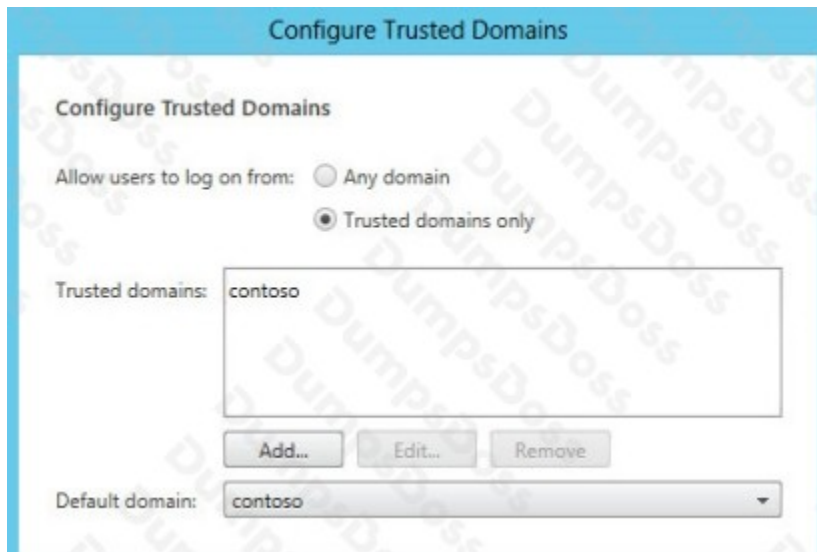
Default appliance:

3) Once the store is created it will give you the web browser URL that you can use to access it. Also take note that to access StoreFront from a web browser you must append "Web" to the store URL, as the URL shows below. Don't try going to /Citrix/Store as that won't work.



Add 'Xirtic' to Trusted Domain

Locate the Authentication node, then in the right pane click on Configure Trusted Domains.



## QUESTION NO: 6

Scenario: A Citrix Administrator needs to audit logins from the NetScaler Gateway. Company policy states that the logs need to be sent to a centralized server.

What should the administrator configure to audit ICA sessions on the NetScaler Gateway?

- A. SYSLOG
- B. HDX Monitoring
- C. Application Firewall
- D. Configuration Logging
- E. NetScaler Web Logging

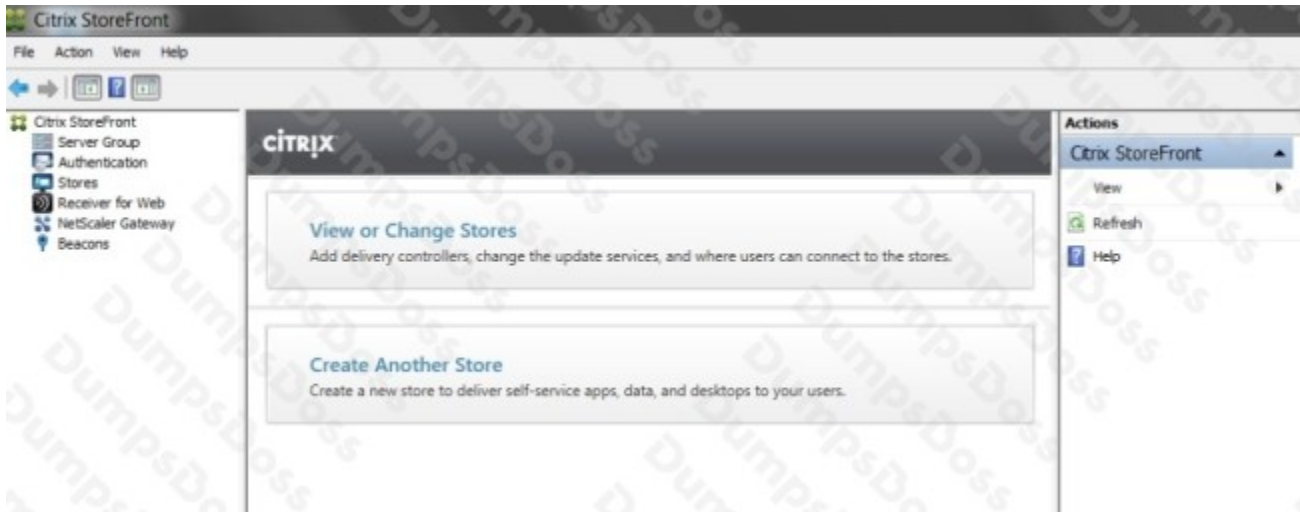
**ANSWER: A**

## QUESTION NO: 7 - (SIMULATION)

Scenario: A Citrix Administrator must modify the store configuration on a StoreFront server to provide users with access to desktop OS machines and server OS hosted applications. A Delivery Controller named Controller-1 needs to be added to the existing site. Controller-1 will serve as the Secure Ticket Authority. The administrator has been instructed to ensure communication with the Delivery Controllers takes place over port 8080.

Tasks:

1. Modify the store named Apps and Desktops to provide users with access to desktop OS machines and server OS hosted applications using hostnames only. Do NOT assume the FQDN.
2. Ensure communication with the Delivery Controllers take place over port 8080.
3. Set up Controller-1 as the Secure Ticket Authority.



**ANSWER: See Explanation Below For Answer**

**Explanation:**

- 1) In Citrix Studio, expand "Citrix StoreFront, click on the "Store" node, click on "Manage Delivery Controllers" under the left Action pane.
- 2) From the "Manage Delivery Controllers" popup windows click on Add.
- 3) From the "Edit Delivery Controller" popup window, the display will be automatically filled in and by default the "XenDesktop" radio button will be highlighted. Click on Add
- 4) From the "Add Server" popup windows type in Controller-1 and click OK.
- 5) Click on "NetScaler Gateway", then "Secure Ticket Authority" under the controller in the right pane to verify that controller-1 is using port 8080 for XML (<https://controller-1:8080/scripts/ctxsta.dll>)

## QUESTION NO: 8

Scenario: A Citrix Administrator configures domain pass-through for a Citrix StoreFront store and installs Citrix Receiver on the client devices. However, after the client devices are restarted, the users are prompted for username and password.

What could be causing this issue?

- A. StoreFront is NOT using an SSL certificate.
- B. NetScaler Gateway is NOT configured on StoreFront.
- C. Delivery Controllers are configured to trust XML requests.
- D. Citrix Receiver was installed without enabling the /includeSSON parameter.

**ANSWER: D**

## QUESTION NO: 9

A Citrix Administrator needs to obtain logs from Machine Creation Services.

Which .config file should the administrator manually modify to enable logging?

- A. BrokerService.exe.Config
- B. Citrix.Configuration.SdkWcfEndpoint.exe.Config
- C. Citrix.MachineIdentity.SdkWcfEndpoint.exe.Config
- D. Citrix.MachineCreation.SdkWcfEndpoint.exe.Config

**ANSWER: D**

## QUESTION NO: 10

Scenario: A Citrix Administrator who works for a hospital receives a request to set the display quality settings to the maximum possible quality for reviewing MRI scans. The hospital is using HDX 3D Pro within a XenDesktop 7.6 deployment.

What should the administrator do to enhance the display quality as required in the scenario?

- A. Enable the Lossless policy
- B. Enable the HDX3DPro Quality Settings policy
- C. Apply the CLI command `xevgpu-create vm-uuid=`
- D. Create a new catalog for the HDX 3D Pro Desktop OS machines

**ANSWER: A**