

DUMPSBOSS.

Windows Operating System Fundamentals

Microsoft 98-349

Version Demo

Total Demo Questions: 15

Total Premium Questions: 260

Buy Premium PDF

<https://dumpsboss.co>

support@dumpsboss.co

support@dumpsboss.co
dumpsboss.co

Topic Break Down

Topic	No. of Questions
Topic 1, Volume A	91
Topic 2, Volume B	169
Total	260

QUESTION NO: 1

After you remove malicious software from an infected computer, the user still experiences problems. When the user opens the browser, it redirects to compromised websites.

You need to troubleshoot the problem.

Which three areas should you investigate? (Choose three.)

- A. The system's hosts file
- B. The proxy settings
- C. The Windows Action Center
- D. The browser's security zone settings
- E. The browser's home page setting

ANSWER: C D E

QUESTION NO: 2

You work for the school library. You are instructed to upgrade all of the library's Windows 8.1 devices to Windows 10 64-bit.

What is the minimum memory the devices must have for you to be able to install Windows 10 64-bit?

- A. 8 GB
- B. 4 GB
- C. 1 GB
- D. 2 GB

ANSWER: D

Explanation:

References: <https://www.microsoft.com/en-gb/windows/windows-10-specifications>

QUESTION NO: 3

Which two system requirements allow Windows 7 to take advantage of 64-bit processing? (Choose two.)

- A. A minimum of 2 GB of RAM

- B. A minimum of 4 GB of RAM
- C. A minimum of 16 GB of available hard disk space
- D. A minimum of 20 GB of available hard disk space

ANSWER: A D

QUESTION NO: 4

You want to view a folder of pictures from an external hard disk drive in your Windows 7 Pictures library.

What should you do?

- A. Use the Include in Library menu to add the folder in Windows Explorer.
- B. Create a connection to the folders by using the Network and Sharing Center.
- C. Access the pictures by using a shared folder.
- D. Enable password-protected sharing.

ANSWER: C

QUESTION NO: 5

Which Windows 7 feature should you use to ensure that only administrators can install new software?

- A. Network and Sharing Center
- B. User Account Control
- C. Microsoft Management Console
- D. Ease of Access

ANSWER: B

QUESTION NO: 6

You want to use your home computer to access your work computer.

Which two actions should you perform before connecting the computers? (Each correct answer presents part of the solution. Choose two.)

- A. Obtain the IP address of the work computer.

- B. Obtain the IP address of the home computer.
- C. Obtain the MAC address of the home computer.
- D. Allow Remote Desktop on the home computer.
- E. Allow Remote Desktop on the work computer,
- F. Obtain the MAC address of the work computer.

ANSWER: D E

QUESTION NO: 7

While attempting to install Windows 10 on your laptop, you receive the following error message on a blue screen:

```
=====
Dump File : 073116-32437-01.dmp
Crash Time : 7/31/2016 10:44:12 AM
Bug Check String : IRQL_NOT_LESS_OR_EQUAL
Bug Check Code : 0x0000000a
Parameter 1 : 00000000`00000002
Parameter 2 : 00000000`00000002
Parameter 3 : 00000000`00000001
Parameter 4: fffff802`0acadc04
Caused By Driver : ntoskrnl.exe
Caused By Address : ntoskrnl.exe+14cc20
File Description :
Product Name :
Company :
File Version :
Processor : x64
Crash Address : ntoskrnl.exe+14cc20
Stack Address 1 :
Stack Address 2 :
Stack Address 3 :
Computer Name :
Full Path : C:\Windows\Minidump\081915-32437-01.dmp
Processors Count : 2
Major Version : 15
Minor Version : 10240
Dump File Size : 278,384
Dump File Time : 7/31/2016 10:45:28 AM
```

Based on the content in the message, what is likely causing the error?

- A. Invalid memory is accessed when there are no more IRQLs available
- B. The CPU timed out while waiting for the device response
- C. Invalid memory is accessed by a device driver
- D. Invalid memory is accessed when the IRQL is too high

ANSWER: C

Explanation:

The IRQL_NOT_LESS_OR_EQUAL bug check indicates that Microsoft Windows or a kernel-mode driver accessed paged memory at an invalid address while at a raised interrupt request level (IRQL).

References:

<https://docs.microsoft.com/en-us/windows-hardware/drivers/debugger/bug-check-0xa--irq!-not-less-or-equal>

QUESTION NO: 8

What happens when a kernel mode process terminates abnormally in Windows 10?

A. The process must be restarted manually

For diagnosing Active Directory replication problems between domain controllers running Microsoft Windows operating systems.

B. The operating system crashes

For connecting to a failover cluster.

C. Windows restarts the process

For controlling and automating the administration of the Windows operating system and applications that runs on Windows.

D. Windows runs the debug utility

For backing up and restoring your operating system, volumes, files, folders, and applications from a command prompt.

ANSWER: C

Explanation:

[Exam](#)

[QUESTION](#)

You are employed as a senior administrator at Prepaway. The Prepaway network consists of a single domain named Prepaway.com.

You are running a Windows Operating System Fundamentals training exercise. You are currently discussing the use of PowerShell.

Which of the following suitably describes the purpose of PowerShell?

A. For diagnosing Active Directory replication problems between domain controllers running Microsoft Windows operating systems.

B. For connecting to a failover cluster.

C. For controlling and automating the administration of the Windows operating system and applications that runs on Windows.

D. For backing up and restoring your operating system, volumes, files, folders, and applications from a command prompt.

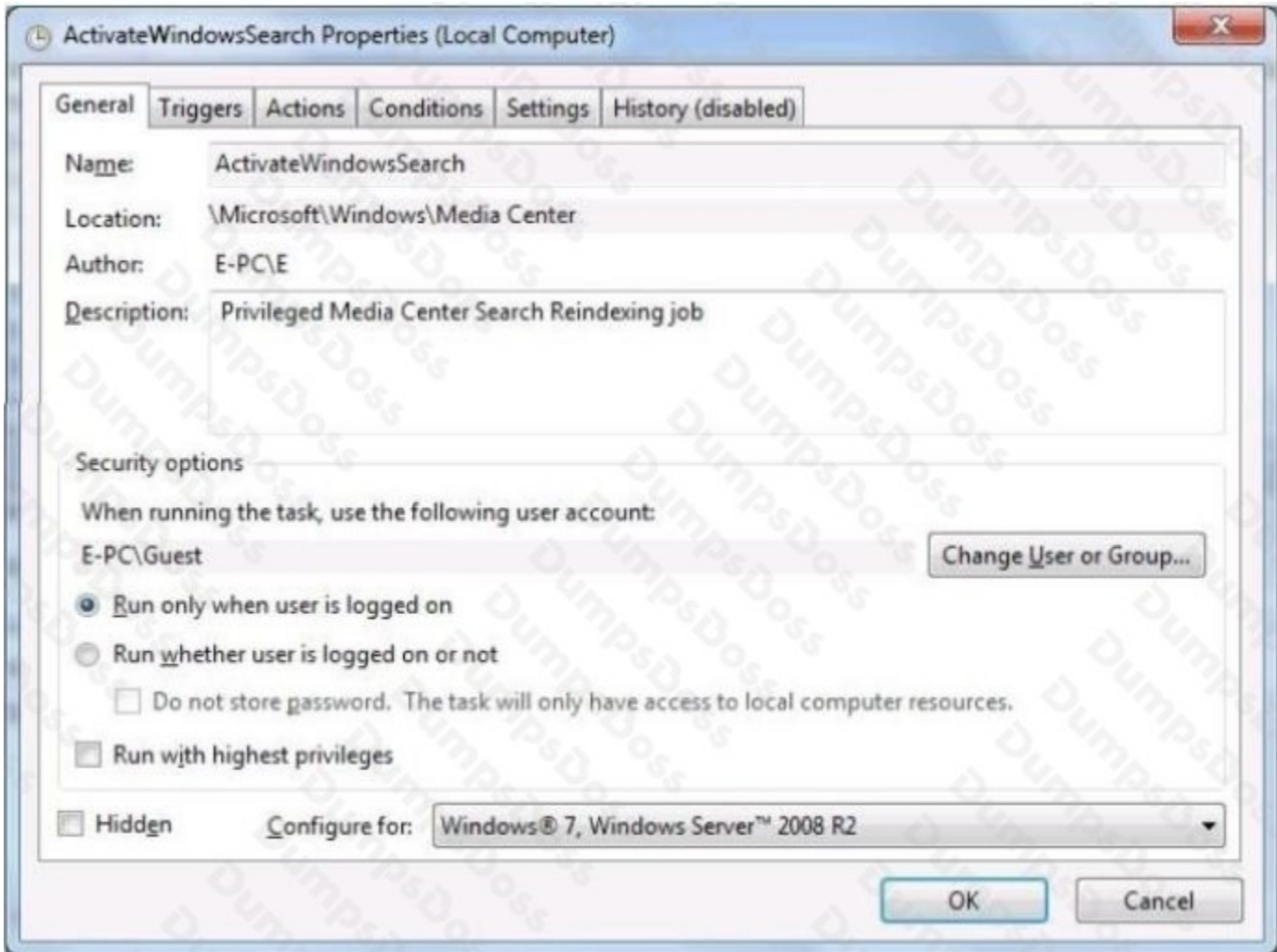
Answer: C

Reference: <http://technet.microsoft.com/en-us/library/dn425048.aspx>

QUESTION NO: 9 - (HOTSPOT)

HOTSPOT

Your roommate complains that her computer is showing an error message that says ActivateWindowsSearch scheduled task failed to run. To troubleshoot the error you go to Task Scheduler and view the properties of the ActivateWindowsSearch task, as shown in the following image:



Use the drop-down menus to select the answer choice that completes each statement. Each correct selection is worth one point.

Hot Area:

Answer Area

To resolve the issue, the first task to complete is [answer choice]

	▼
set the task to run as SYSTEM.	
set the task to run as LOCAL SERVICE.	
set the task to run as NETWORK SERVICE.	

To resolve the issue, the second task to complete is [answer choice]

	▼
set the task to run whether the user is logged on or not.	
set the task to run with highest privileges.	
set the task to "Configure" for Windows Vista.	

ANSWER:

Answer Area

To resolve the issue, the first task to complete is [answer choice]

	▼
set the task to run as SYSTEM.	
set the task to run as LOCAL SERVICE.	
set the task to run as NETWORK SERVICE.	

To resolve the issue, the second task to complete is [answer choice]

	▼
set the task to run whether the user is logged on or not.	
set the task to run with highest privileges.	
set the task to "Configure" for Windows Vista.	

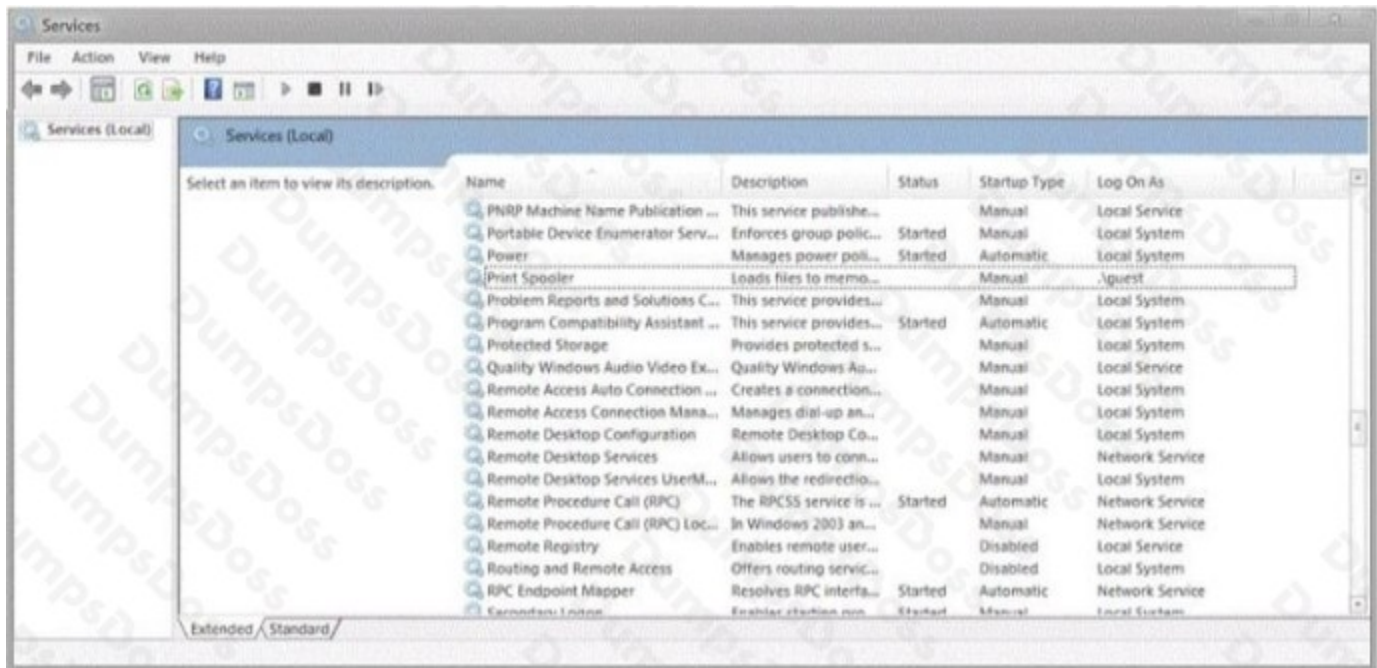
Explanation:

QUESTION NO: 10 - (HOTSPOT)

HOTSPOT

During your summer job at Lucerne Publishing, an employee's computer is infected by a virus, which is then removed. However, this virus made changes to a service on the computer, and now the employee is unable to print or even see networked printers.

The employee's services are shown in the following image:



Use the drop-down menus to select the answer choice that completes each statement. Each correct selection is worth one point.

Hot Area:

Answer Area

Set the Print Spooler service to a startup type of **[answer choice]**

Set the Print Spooler service to the **[answer choice]** level of privileges.

ANSWER:

Answer Area

Set the Print Spooler service to a startup type of [answer choice]

Automatic.
Manual.
Disabled.

Set the Print Spooler service to the [answer choice] level of privileges.

Local System
Local Service
Network Service

Explanation:

QUESTION NO: 11

Which two versions of Windows 7 support the Encrypting File System (EFS) functionality? (Each correct answer presents a complete solution. Chose two.)

- A. Ultimate Edition
- B. Home Premium Edition
- C. Professional Edition
- D. Starter Edition

ANSWER: A C

Explanation:

EFS is not fully supported on Windows 7 Starter, Windows 7 Home Basic, and Windows 7 Home Premium.

QUESTION NO: 12

Which three of these may be included in a service pack? (Choose three.)

- A. A remote servicing of the operating system
- B. A reinstallation of the operating system
- C. All previously released important and recommended Windows Updates
- D. New functionality
- E. Fixes for security issues

ANSWER: C D E

QUESTION NO: 13

What is a reason to use FAT32 as the file system for Windows 10?

- A. To have support for files larger than 4 GB
- B. To recover disk errors automatically
- C. To dual boot with an older version of Windows
- D. To set file permissions

ANSWER: C

QUESTION NO: 14

Which two versions of Windows 7 support the Encrypting File System (EFS) functionality? (Each correct answer presents a complete solution. Choose two.)

- A. Professional Edition
- B. Ultimate Edition
- C. Home Premium Edition
- D. Starter Edition

ANSWER: B D

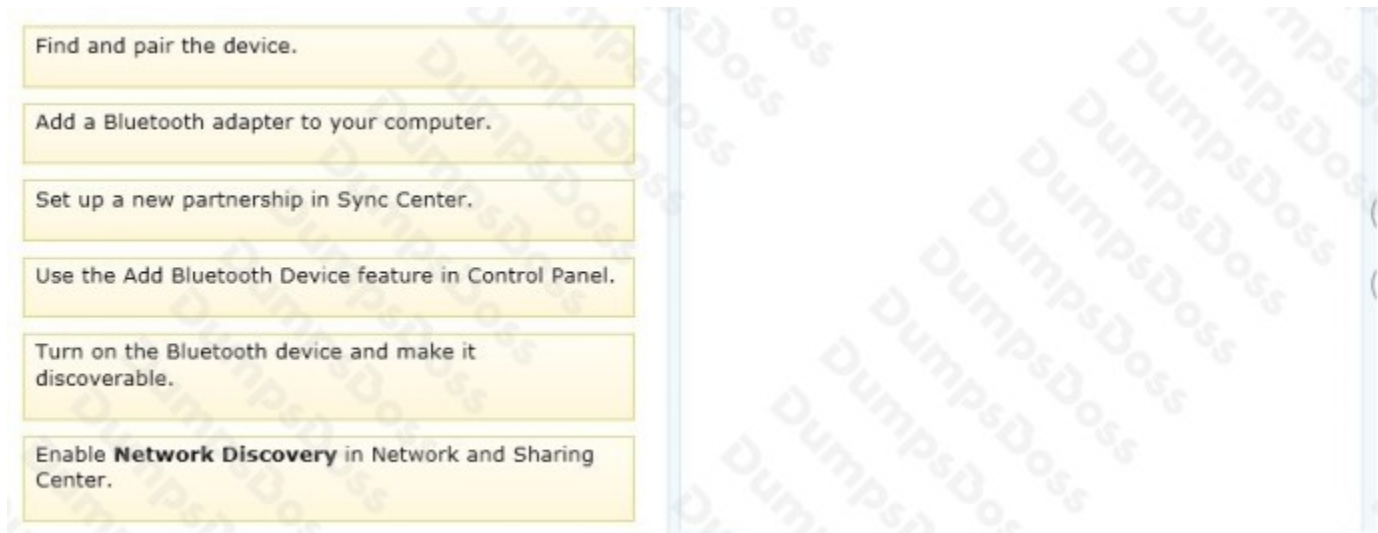
QUESTION NO: 15 - (DRAG DROP)

DRAG DROP

You need to enable connection to a Bluetooth device.

What should you do? (To answer, move the four appropriate actions from the list of actions to the answer area and arrange them in the correct order.)

Select and Place:



ANSWER:



Explanation:

Note:

Step 1: Add a Bluetooth adapter to your computer if it doesn't already have one. You can do this by plugging the adapter into a USB port.

Step 2: Set up the Bluetooth enabled device so that your computer can find it.


To do this, you must first:

Turn the device on.

Make it discoverable.

Step 3 – step 4: To add a Bluetooth enabled device

Once you've verified that a Bluetooth adapter is installed on your computer, and the device you want to connect with is discoverable, you can add most Bluetooth enabled devices to your computer. Here's how:

Open Devices and Printers by clicking the Start button  Picture of the Start button, and then, on the Start menu, clicking Devices and Printers.

Click Add a device, and then follow the instructions.

Click the Bluetooth enabled device you want to add to your computer, and then click Next. If you don't see the device you want to add, make sure the device is turned on and discoverable. If you just turned on the device, it may take Windows several seconds to detect it.

Windows might ask you to enter a pairing code (sometimes called a PIN or passcode). Most Bluetooth enabled devices need to be paired with your computer before they can exchange information with each other. To do this, they must exchange protected pairing codes. This means that only the wireless devices you authorize can connect with your computer.