

DUMPSBOSS.

Designing Business Intelligence Solutions with Microsoft SQL Server 2012

Microsoft 70-467

Version Demo

Total Demo Questions: 13

Total Premium Questions: 176

Buy Premium PDF

<https://dumpsboss.co>

support@dumpsboss.co

support@dumpsboss.co
dumpsboss.co

Topic Break Down

Topic	No. of Questions
Topic 1, Case Study 1	13
Topic 2, Case Study 2	13
Topic 3, Case Study 3	14
Topic 4, Case Study 4	12
Topic 5, Case Study 5	12
Topic 6, Case Study 6	10
Topic 7, Mixed Questions	102
Total	176

QUESTION NO: 1

You are designing a reporting solution that uses SQL Server Reporting Services (SSRS) in SharePoint integrated mode.

The reporting solution must meet the following requirements:

- Allow report writers to reuse content between different reports.
- Allow report writers to modify reusable content in SharePoint. ▪ Retain version history for report content.

You need to choose a reporting method that meets the requirements.

What should you use? (More than one answer choice may achieve the goal. Select the BEST answer.)

- A. drillthrough reports
- B. linked reports
- C. subreports
- D. report parts

ANSWER: D

QUESTION NO: 2 - (DRAG DROP)

DRAG DROP You administer a SQL Server Analysis Services (SSAS) instance.

You need to capture a continuous log of detailed event and subevent durations and custom trace events from queries executed in the SSAS instance.

Which three actions should you perform in sequence? (To answer, move the appropriate actions from the list of actions to the answer area and arrange them in the correct order.)

Select and Place:

Write a Multidimensional Expressions (MDX) script to query the DISCOVER_TRACES dynamic management view (DMV).

Write an XMLA script to log the extended events of the trace.

Launch SQL Server Profiler and connect to the instance.

Execute the script.

Launch SQL Server Management Studio and connect to the instance.

Configure the trace to save to a SQL Server database table.

ANSWER:

Write a Multidimensional Expressions (MDX) script to query the DISCOVER_TRACES dynamic management view (DMV).

Launch SQL Server Profiler and connect to the instance.

Configure the trace to save to a SQL Server database table.

Write an XMLA script to log the extended events of the trace.

Launch SQL Server Management Studio and connect to the instance.

Execute the script.

Explanation:

Note:

* Auditing an instance of SQL Server or a SQL Server database involves tracking and logging events that occur on the system. The SQL Server Audit object collects a single instance of server- or database-level actions and groups of actions to monitor. The audit is at the SQL Server instance level. You can have multiple audits per SQL Server instance. The Server Audit Specification object belongs to an audit. You can create one server audit specification per audit, because both are created at the SQL Server instance scope.

* Trace events can be started and captured using SQL Server Profiler, or can be started from an XMLA command as SQL Server Extended Events and later analyzed.

* Extended Event tracing is enabled using a similar XMLA create object script.

Reference: Analysis Services Trace Events

QUESTION NO: 3

You need to configure permissions for the Customers dimension.

What should you do? (Each correct answer presents a complete solution. Choose all that apply.)

- A. In SQL Server Management Studio, configure the BusinessUsers role to disallow the reading of all definitions.
- B. In SQL Server Data Tools, configure the BusinessUsers role to disallow the reading of the Customers dimension definition.
- C. In SQL Server Management Studio, deny the member set for the Customers dimension data by using the Multidimensional Expressions (MDX) expression `Filter([BusinessUsers])`.
- D. In SQL Server Management Studio, configure the BusinessUsers role to disallow the reading of the Customers dimension definition.

ANSWER: B D

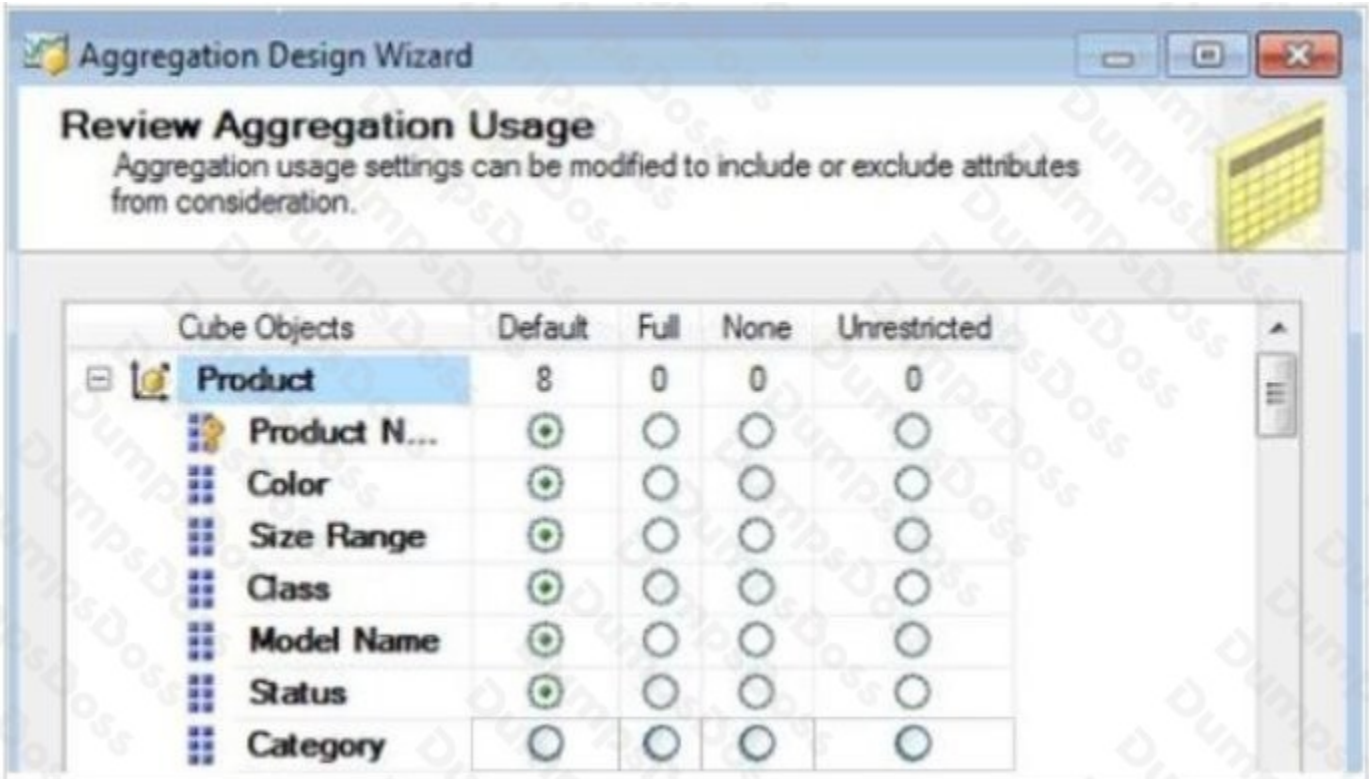
QUESTION NO: 4 - (HOTSPOT)

HOTSPOT You are designing aggregations for a SQL Server Analysis Services (SSAS) cube.

You need to ensure that every aggregation includes the Category attribute.

Which option should you select? To answer, select the appropriate option button in the answer area.

Hot Area:

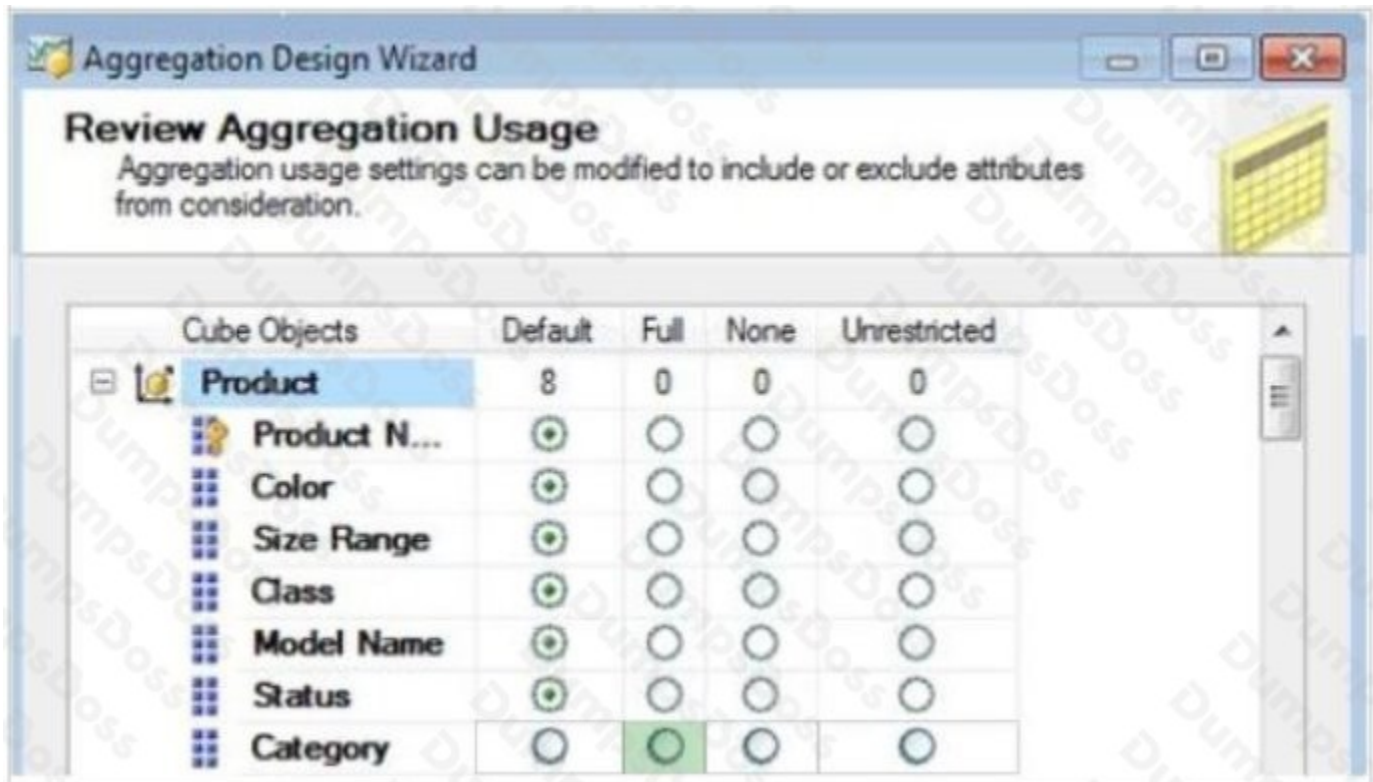


Aggregation Design Wizard

Review Aggregation Usage
Aggregation usage settings can be modified to include or exclude attributes from consideration.

Cube Objects	Default	Full	None	Unrestricted
Product	8	0	0	0
Product N...	<input checked="" type="radio"/>	<input type="radio"/>	<input type="radio"/>	<input type="radio"/>
Color	<input checked="" type="radio"/>	<input type="radio"/>	<input type="radio"/>	<input type="radio"/>
Size Range	<input checked="" type="radio"/>	<input type="radio"/>	<input type="radio"/>	<input type="radio"/>
Class	<input checked="" type="radio"/>	<input type="radio"/>	<input type="radio"/>	<input type="radio"/>
Model Name	<input checked="" type="radio"/>	<input type="radio"/>	<input type="radio"/>	<input type="radio"/>
Status	<input checked="" type="radio"/>	<input type="radio"/>	<input type="radio"/>	<input type="radio"/>
Category	<input type="radio"/>	<input type="radio"/>	<input type="radio"/>	<input type="radio"/>

ANSWER:



Explanation:

QUESTION NO: 5

You are designing a strategy for an enterprise reporting solution that uses SQL Server Reporting Services (SSRS).

Many of the SSRS reports will use common utilities and functions, including the following:

- Report utility functions and business logic in code
- Standardized report formatting properties such as fonts and colors for report branding

Formatting may change and new functions may be added as the reporting solution evolves.

You need to create a strategy for deploying the formatting and code across the entire enterprise reporting solution. You must also ensure that reports can be easily updated to reflect formatting and function changes.

What should you do? (More than one answer choice may achieve the goal. Select the BEST answer.)

- A.** Create a report as a template. Apply standardized formatting to the template. Store code in the Code section of the template.
- B.** Build a web service that retrieves formatting properties and runs code. Call the web service through a report dataset.
- C.** Store the formatting properties and code in database objects. Use stored procedures to populate a default value for report parameters and map each parameter to a corresponding formatting property.

D. Create an assembly that contains formatting properties and code. Deploy the assembly on the Reporting Server and reference the assembly from each report.

ANSWER: D

QUESTION NO: 6 - (HOTSPOT)

HOTSPOT

You have an OLAP cube named Cube1. Cube1 has two partitions named partition1 and partition2. You need to configure the storage mode for each cube partition.

The solution must meet the following requirements:

- Users must be able to retrieve aggregate data from partition1 as quickly as possible.
- The processing time for partition1 and partition2 must be minimized.
- The least possible amount of storage must be used for partition2.

What should you do? To answer, select the appropriate storage mode for each partition in the answer area.

Hot Area:

Answer Area	
Partition1	Partition2
<input type="text"/>	<input type="text"/>
MOLAP	MOLAP
ROLAP	ROLAP
HOLAP	HOLAP

ANSWER:

Actions	Answer Area
Use indirect database configurations.	
Use the <code>/SET</code> parameter.	
Configure the project to use the Project Deployment Model.	
Use a project parameter.	
Use direct XML configurations.	
Configure the project to use the Package Deployment Model.	
Mark the parameter as sensitive.	
Mark the parameter as required.	

ANSWER:

Actions	Answer Area
Use indirect database configurations.	Configure the project to use the Project Deployment Model.
Use the <code>/SET</code> parameter.	Use a project parameter.
Use direct XML configurations.	Mark the parameter as required.
Configure the project to use the Package Deployment Model.	
Mark the parameter as sensitive.	

Explanation:

QUESTION NO: 8

You need to recommend a cube architecture for CUBE1. The solution must meet the performance requirements for CUBE1.

Which two partitions should you recommend creating? Each correct answer presents part of the solution.

- A. Partitions based on the values of the customerID column in the dimension table
- B. Partitions based on the values of the customerID column in the fact table
- C. Partitions based on the values of the productID column in the fact table
- D. Partitions based on the values of the productID column in the dimension table

ANSWER: A D

QUESTION NO: 9

You have a SQL Server Reporting Services (SSRS) 2012 instance integrated with a Microsoft SharePoint 2010 farm.

You need to upgrade to SSRS 2014 with the minimum downtime and hardware requirements. What should you do? (More than one answer choice may achieve the goal. Select the BEST answer.)

- A. Install SSRS 2014 on a new SharePoint farm and migrate content to the new farm.
- B. Migrate SSRS content to new servers that run SSRS 2014.
- C. Migrate SSRS content to a separate instance of SSRS 2014 on the same server.
- D. Perform an in-place upgrade of the SSRS environment.

ANSWER: D

Explanation:

We cannot do a side-by-side installation (answer C) because that's not supported in SharePoint mode so an in-place upgrade is the only option that doesn't require additional servers.

SQL Server 2014 Reporting Services (SSRS) Native mode can be installed side-by-side with a SQL Server 2012 Native mode deployment.

There is no support for side-by-side deployments of SQL Server 2014 Reporting Services (SSRS) SharePoint mode and any previous versions of SharePoint mode components.

QUESTION NO: 10

You need to select a method of moving data from the staging tables to the factOrders table.

What type of Transact-SQL (T-SQL) statement should you use?

- A. INSERT INTO...SELECT
- B. SELECT...INTO
- C. ALTER PARTITION-SWITCH
- D. ALTER PARTITION FUNCTION
- E. ALTER TABLE...SWITCH

ANSWER: E

QUESTION NO: 11 - (HOTSPOT)

HOTSPOT You are developing a SQL Server Reporting Services (SSRS) solution.

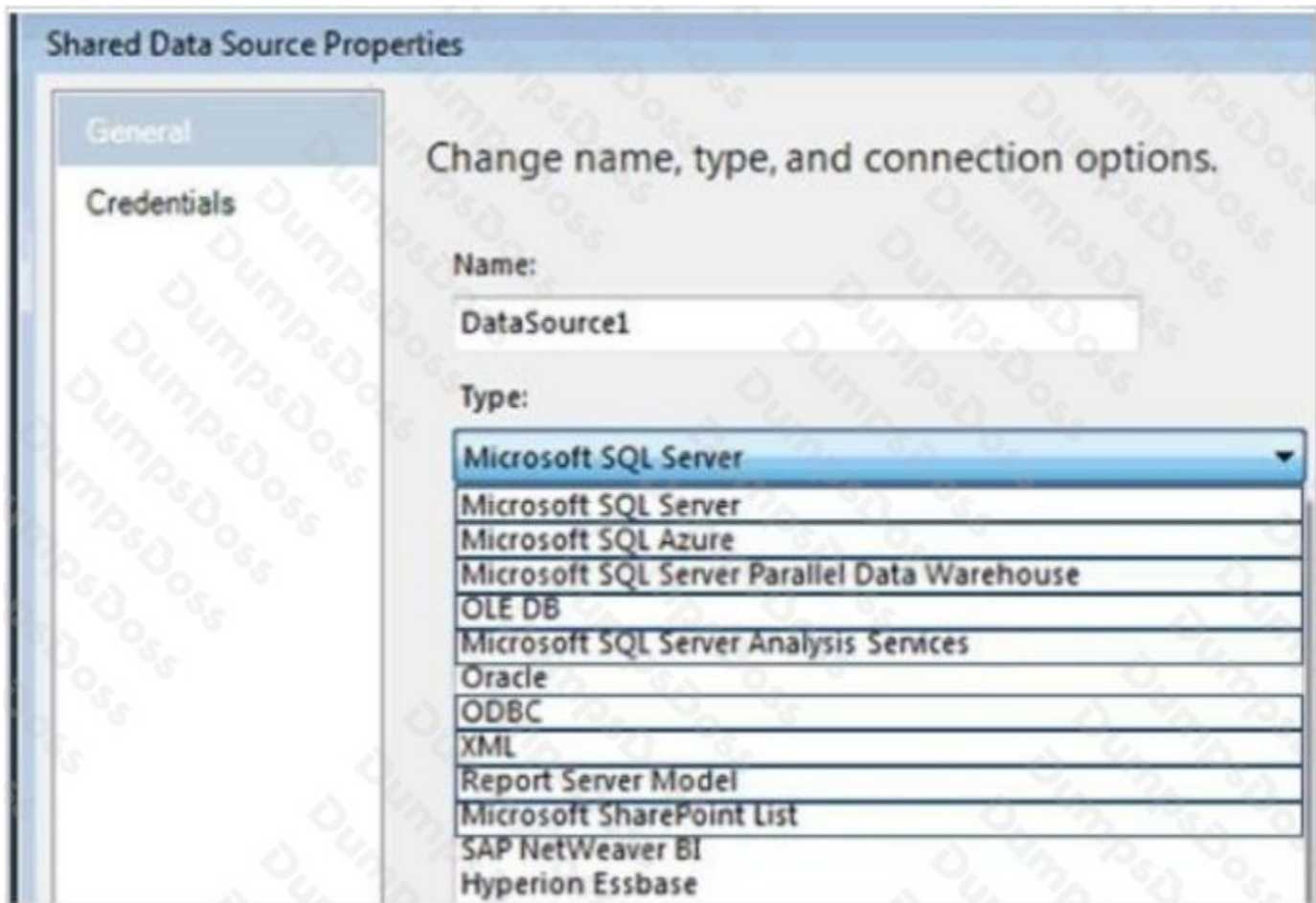
You plan to create reports based on the results of a currency exchange SOAP web service call.

You need to configure a shared data source.

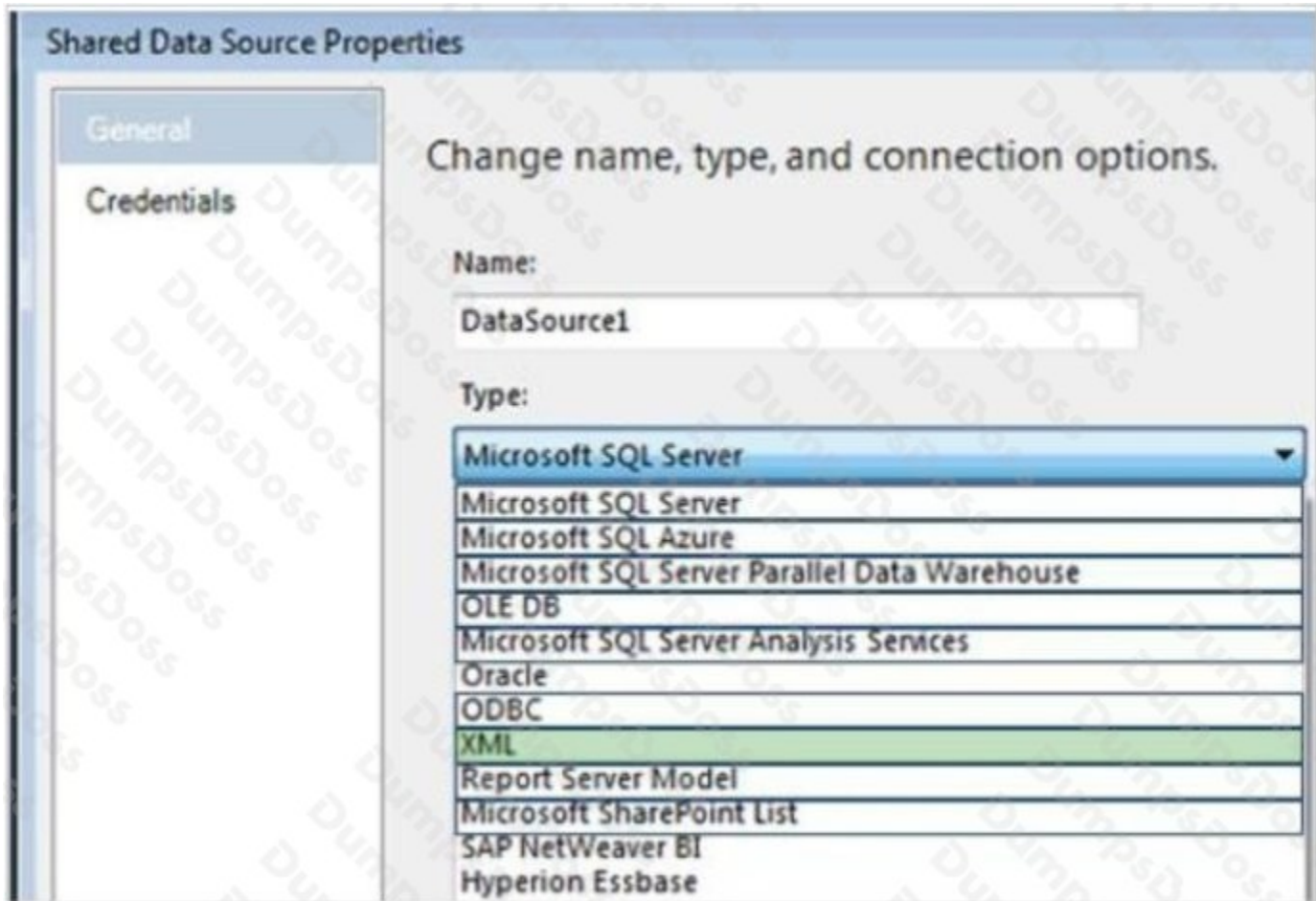
Which data source type should you use?

To answer, select the appropriate type from the drop-down list in the answer area.

Hot Area:



ANSWER:

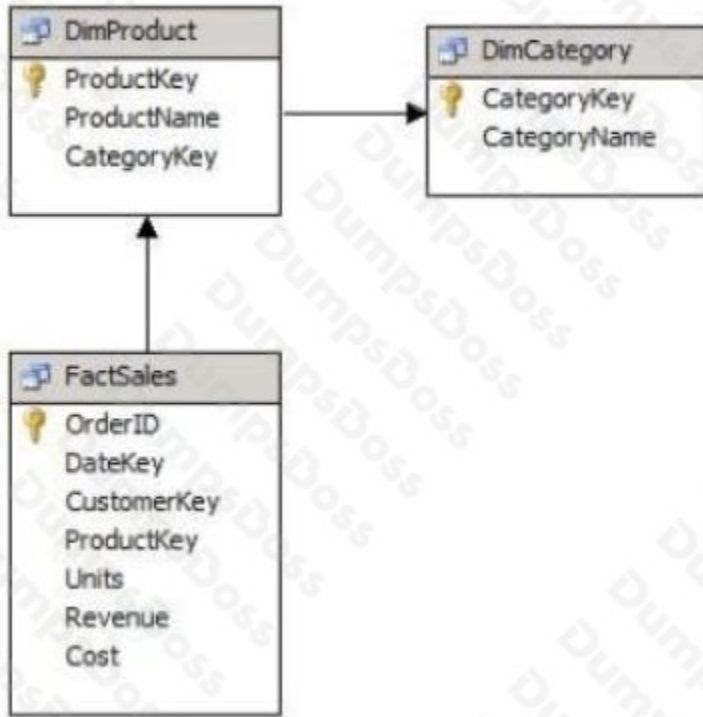


Explanation:

QUESTION NO: 12 - (HOTSPOT)

HOTSPOT You are developing a SQL Server Analysis Services (SSAS) cube. A dimension named Category is based on the DimCategory table.

A subset of the data source view is shown in the following graphic.



You need to relate the Category dimension to the Sales measure group.

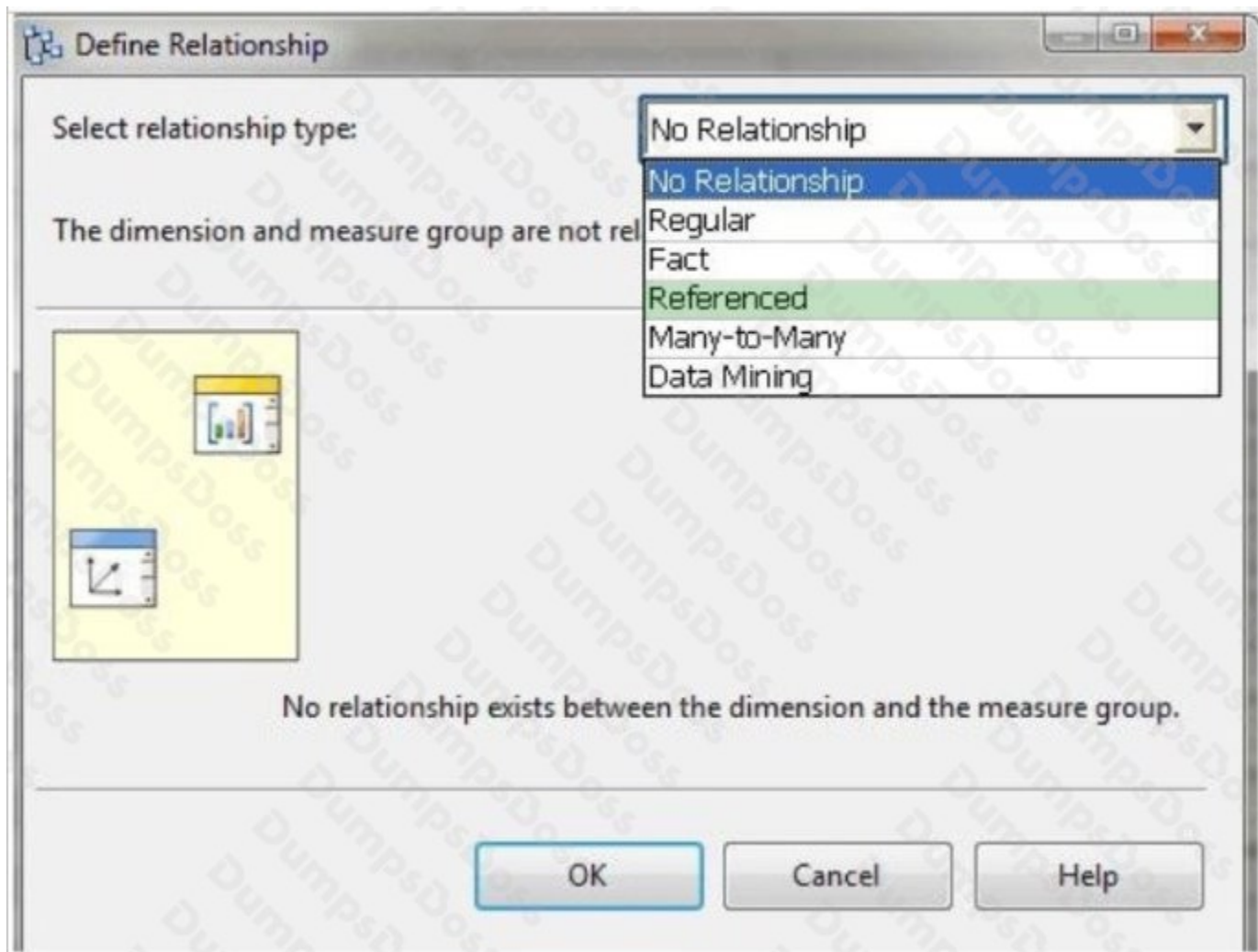
Which relationship type should you choose?

To answer, select the appropriate option from the drop-down list in the dialog box.

Hot Area:



ANSWER:

**Explanation:**

Note:

Referenced Relationship

Link a dimension to a fact table indirectly through a dimension that is linked directly through a primary key–foreign key relationship.

QUESTION NO: 13

You need to ensure that the Sales measure in the Power View field list meets the requirements. What should you do? (Each correct answer presents a part of the solution. Choose all that apply.)

- A. Format the column to display zero decimal places.
- B. Hide the column from client tools.
- C. Create a measure named Sales based on the column by using the Data Analysis Expressions (DAX) SUM() function.

D. Rename the column to Sales.

E. Format the measure to display zero decimal places.

ANSWER: A C

Explanation:

* Data Analysis Expressions (DAX) provides many functions for creating aggregations such as sums, counts, and averages. These functions are very similar to aggregation functions used by Microsoft Excel.

* SUMX Function

Returns the sum of an expression evaluated for each row in a table.