

DUMPSBOSS.

Nokia Border Gateway Protocol

Alcatel-Lucent 4A0-102

Version Demo

Total Demo Questions: 10

Total Premium Questions: 152

Buy Premium PDF

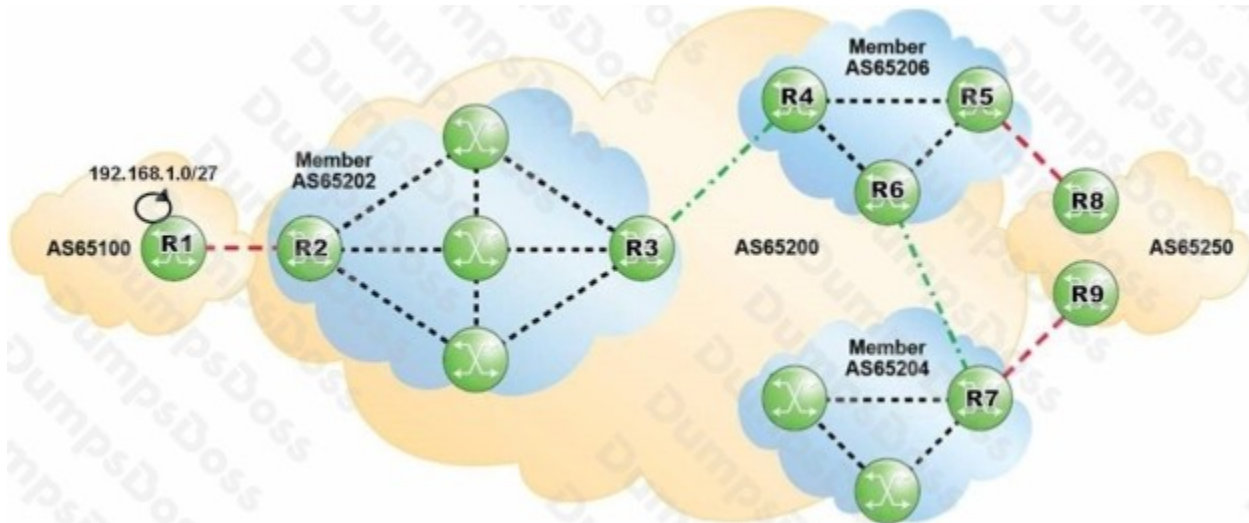
<https://dumpsboss.co>

support@dumpsboss.co

support@dumpsboss.co
dumpsboss.co

QUESTION NO: 1

Click the exhibit.



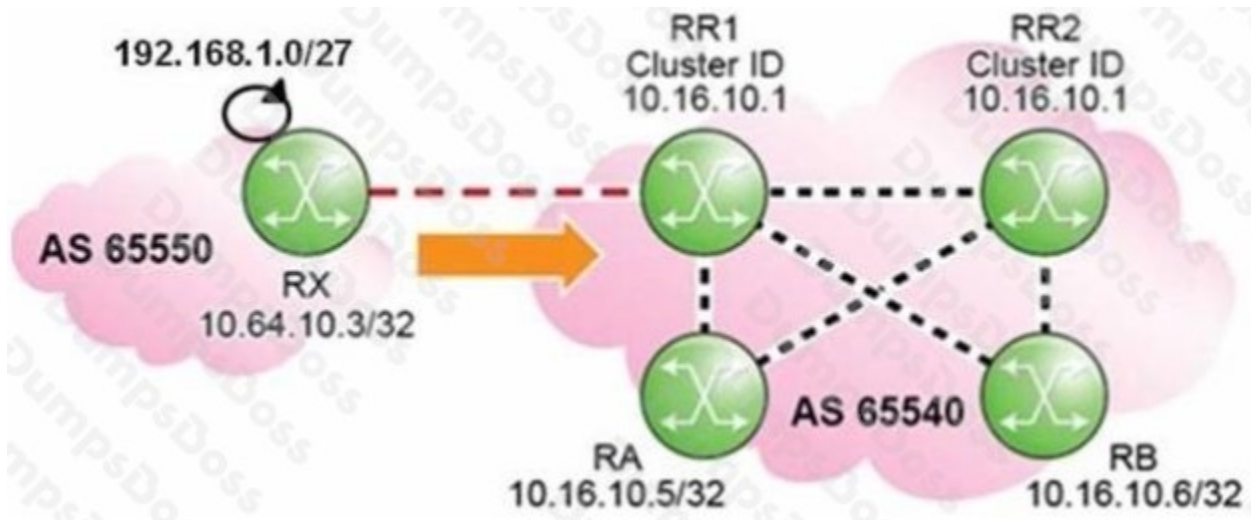
Which of the following statements best describes the BGP sessions within the given network?

- A. The session between AS 65202 and AS 65206 is an iBGP session.
- B. The session between AS 65204 and AS 65206 is an intra-confederation eBGP session.
- C. A BGP session is required between AS 65202 and AS 65204.
- D. The BGP sessions within the member ASs are known as inter-confederation BGP sessions.

ANSWER: B

QUESTION NO: 2

Click the exhibit.



Routers RR1 and RR2 are route reflectors with the same cluster-ID. How many updates for prefix 192.168.1.0/27 are received at router RR1?

- A. 1
- B. 2
- C. 3
- D. 4

ANSWER: A

QUESTION NO: 3

Assuming that "client1" and "client2" are directly-connected networks, what is the result of executing the following BGP export policy?

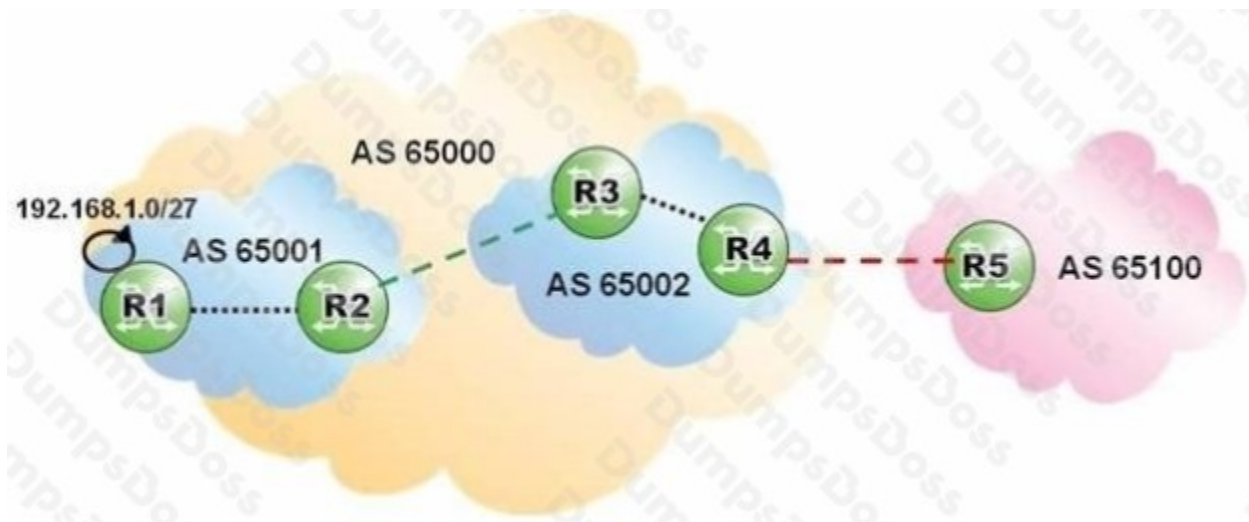
```
entry 10
  from
    protocol direct
  exit
  action accept
    community add "North"
  exit
exit
entry 20
  from
    prefix-list "client1"
  exit
  action accept
    community add "West"
  exit
exit
entry 30
  from
    prefix-list "client2"
  exit
  action accept
    community add "East"
  exit
exit
default-action reject
```

- A. "client1" routes will be tagged with communities "North" and "West".
- B. "client1" routes will be tagged with community "West".
- C. "client1" routes will be tagged with community "North".
- D. "client1" routes will be rejected.

ANSWER: C

QUESTION NO: 4

Click the exhibit.



Router R1 is advertising prefix 192.168.1.0/27 with community "no-export". Which routers will receive an update for that prefix?

- A. Router R2 only.
- B. Routers R2 and R3 only.
- C. Routers R2, R3 and R4 only.
- D. Routers R2, R3, R4 and R5.

ANSWER: D

QUESTION NO: 5

Which of the following statements regarding BGP Add-Paths is FALSE?

- A. Add-Paths allows non-best paths to be advertised to a peer.
- B. Add-Paths capabilities are exchanged between peers after the BGP session is established.
- C. A BGP speaker must advertise the capability to receive multiple paths from its peer.
- D. A BGP speaker must advertise the capability to send multiple paths to its peer.

ANSWER: B

QUESTION NO: 6

An Alcatel-Lucent 7750 SR is configured with a policy to export directly-connected networks to BGP. Which of the following commands verifies that the export was successful?

- A. show router route-table
- B. show router bgp routes
- C. show router bgp routes hunt
- D. show router bgp neighbor received-routes

ANSWER: C

QUESTION NO: 7

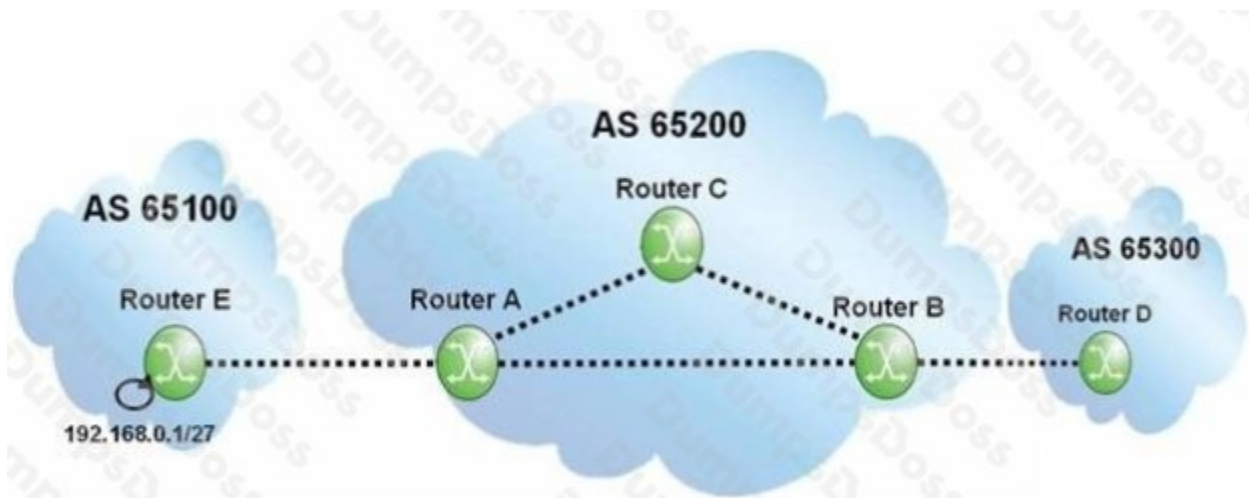
Which of the following is NOT considered an option of export policies?

- A. Advertising customer networks into BGP.
- B. Sending aggregates that summarize the AS s address space.
- C. Sending MEDs to influence ingress traffic from peers.
- D. Preventing unwanted NLRI from entering the AS.

ANSWER: D

QUESTION NO: 8

Click the exhibit.



Assuming router A is configured with "next-hop-self", what does the BGP update for prefix 192.168.0.1/27 contain when it arrives at router B?

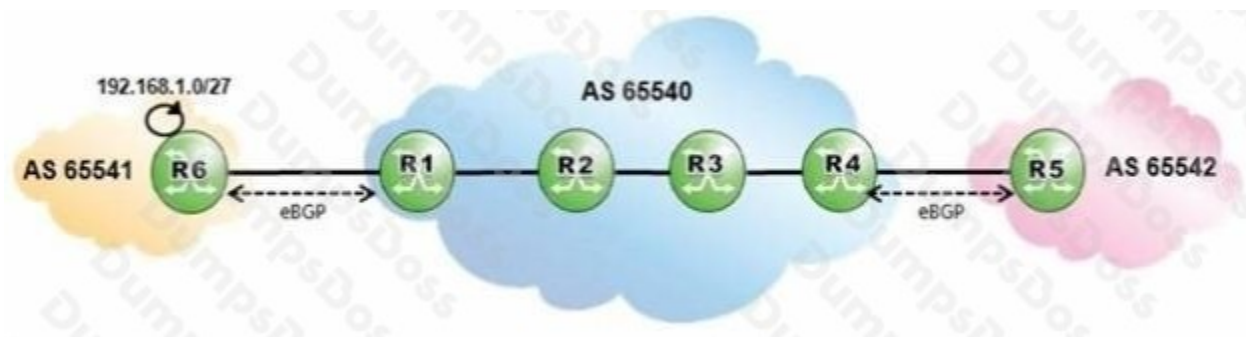
- A. AS Path of 65200 65100, Next Hop of router A.

- B. AS Path of 65200 65100, Next Hop of router E.
- C. AS Path of 65100, Next Hop of router A.
- D. AS Path of 65100, Next Hop of router E.

ANSWER: C

QUESTION NO: 9

Click on the exhibit.



AS 65540 is using MPLS to provide BGP shortcuts for its iBGP routing. Which routers must be configured with the "configure router bgp igp-shortcuts rsvp-te" command?

- A. Routers R6, R1, R4 and R5.
- B. Routers R1 and R4.
- C. Routers R1, R2, R3 and R4.
- D. Routers R2 and R3.

ANSWER: B

QUESTION NO: 10

A router in AS 65100 receives three routes for 138.120.0.0/16. The first route has an AS Path of 65200 65400 65300 and a local preference of 150. The second route has an AS Path of 65200 65300 and a local preference of 100. The third route has an AS Path of 65600 65300 and a local preference of 100. Which route will appear in the RIB-out?

- A. Only the first route will appear in the RIB-Out.
- B. Only the second route will appear in the RIB-Out.
- C. Only the third route will appear in the RIB-Out.

D. All routes will appear in the RIB-Out.

ANSWER: A