

# DUMPSBOSS.

## Cisco Routing and Switching Solutions Specialist

Cisco 644-066

Version Demo

Total Demo Questions: 10

Total Premium Questions: 64

Buy Premium PDF

<https://dumpsboss.co>

[support@dumpsboss.co](mailto:support@dumpsboss.co)

support@dumpsboss.co  
dumpsboss.co

## QUESTION NO: 1

A client organization is investigating deploying IP communications. It has a traditional hub and spoke Frame Relay WAN. It has five remote sites, and the WAN link speed for each location is 512 kbps. The WAN supports typical IP-based applications, but the client will also be rolling out a new ERP application that will be considered mission critical. Which three QoS mechanisms will be useful in redesigning the WAN to support the mission-critical application and IP communications? (Choose three.)

- A. LFI
- B. CBWFQ
- C. 5 to 11 class model
- D. LLQ
- E. cRTP
- F. WFQ

**ANSWER: A D E**

## QUESTION NO: 2

What is a primary objective of the security architecture assessment?

- A. document power and UPS availability
- B. to integrate routing and switching components
- C. create a design specification document
- D. document the customer's current and future technology projects

**ANSWER: B**

## QUESTION NO: 3

Which two of these tasks are important when designing for high availability? (Choose two.)

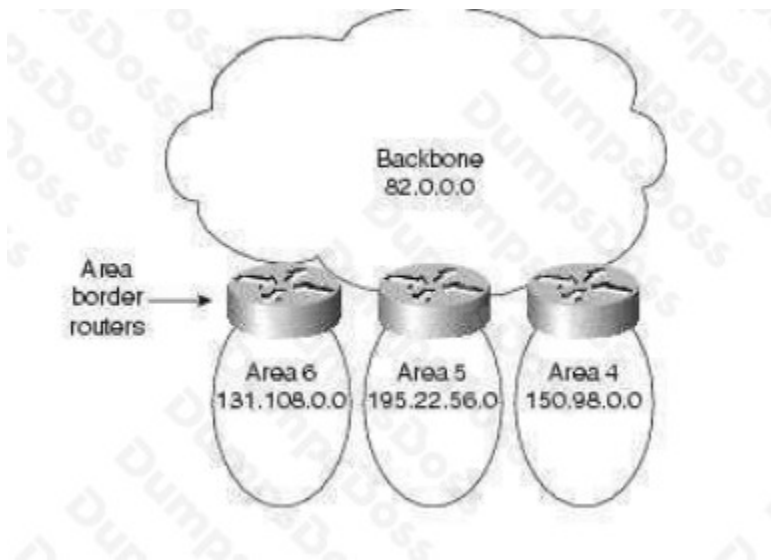
- A. selecting high-end devices
- B. identifying single points of failures
- C. improving performance to consequently increase availability

- D. introducing redundancy to mitigate potential single points of failure
- E. removing devices and features that introduce single points of failures

**ANSWER: B D**

## QUESTION NO: 4

Refer to the exhibit.



Which would be a benefit of designing the OSPF network as shown?

- A. Routes can be redistributed within the individual areas.
- B. The backbone area does not need any internal routers.
- C. Route summarization is enabled by default in this type of configuration.
- D. Route summarization configuration at the ABRs is greatly simplified.

**ANSWER: D**

## QUESTION NO: 5

Which three features does the Cisco Catalyst 4500 Series Switch offer? (Choose three.)

- A. nonblocking switching capabilities for Layers 2 and 3 only
- B. integrated resiliency in software and hardware
- C. built-in spam blocker

- D. concurrent services provisioning
- E. TCAM resources that enable "high feature capacity" with 64,000 entries
- F. policy-based VM connectivity

**ANSWER: B D E**

## QUESTION NO: 6

You have a client that currently has a single connection to an ISP. Your client is growing rapidly and would like to provide more capacity to the Internet without losing the ability to support high availability. Which methodology will support dual-homed connections to the same ISP and also support high availability?

- A. VRRP
- B. HSRP
- C. RPR+
- D. GLBP

**ANSWER: D**

## QUESTION NO: 7

Which two of these protocols can be used to provide secure connectivity when connecting a branch office to the campus core? (Choose two.)

- A. GRE
- B. L2TP
- C. IPsec
- D. IP in IP
- E. L2TP over IPsec

**ANSWER: C E**

## QUESTION NO: 8

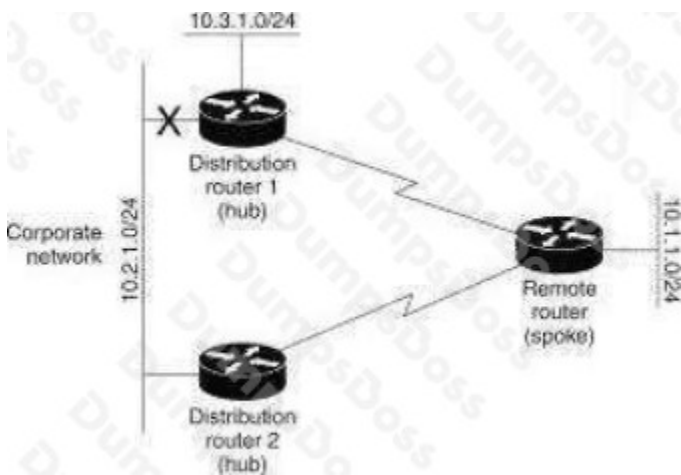
You have a customer who would like to upgrade their branch to Metro Ethernet. Which profile can be used as a migration profile to show the customer how to upgrade their branch?

- A. single-tier branch profile
- B. double-tier branch profile
- C. triple-tier branch profile
- D. multitier branch profile

**ANSWER: B**

### QUESTION NO: 9

Refer to the exhibit. The network is running the EIGRP routing protocol. Distribution router 1 loses the link to the corporate network. How should the remote spoke router be configured to prevent it from being the next-lowest-cost path to network 10.3.1.0?



- A. Disable split horizon.
- B. Configure it as an EIGRP stub router.
- C. Enable route filtering.
- D. Configure a floating static route to network 10.3.1.0.

**ANSWER: B**

### QUESTION NO: 10

When designing an advanced technology-ready organization, what four features should you look for when analyzing the initial performance of any solution? (Choose four.)

- A. It should allow for future growth.

- B.** It should have no component above 50 percent of its maximum.  
It should only use a select few devices and links.
- C.** It should use QoS mechanisms.
- D.** It should not use an SLA.
- E.** It should only consider top-of-rack installations.

**ANSWER: A B C E**