

# DUMPSBOSS.

## Nokia Multicast Protocols

Alcatel-Lucent 4A0-108

Version Demo

Total Demo Questions: 15

Total Premium Questions: 247

Buy Premium PDF

<https://dumpsboss.co>

[support@dumpsboss.co](mailto:support@dumpsboss.co)

support@dumpsboss.co  
dumpsboss.co

## Topic Break Down

Topic	No. of Questions
Topic 1, Volume A	59
Topic 2, Volume B	60
Topic 3, Volume C	60
Topic 4, Volume D	68
<b>Total</b>	<b>247</b>

**QUESTION NO: 1**

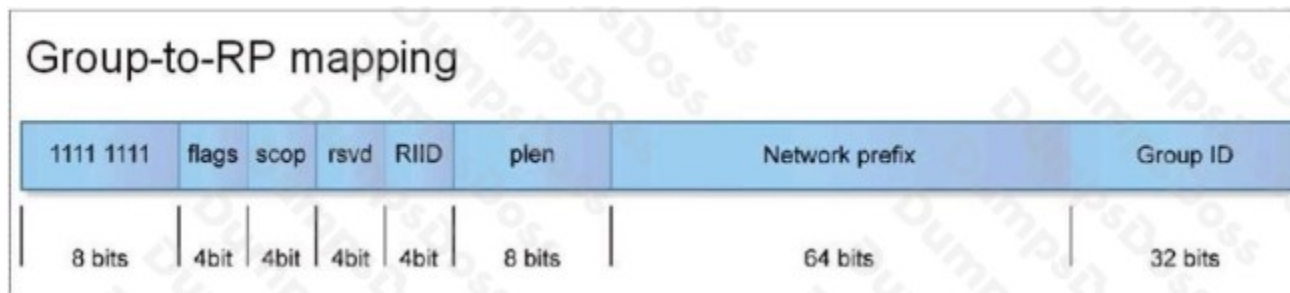
Which of the following ranges is reserved for IPv6 SSM multicast addresses?

- A. FF1X::/16
- B. FF3X::/16
- C. FF3X::/96
- D. FF7X::/16

**ANSWER: C**

**QUESTION NO: 2**

The network administrator of 2001:DB8:FEED::/64 wants to embed an RP for the network and the RP's address is 2001:DB8:FEED::7. Which of the following multicast address ranges would suit this purpose? (The exhibit of Group-to-RP Mapping is just for your reference)



- A. FF7x:730:2001:DB8:FEED::/96(x is scope)
- B. FF7x:730:2001:DB8:FEED::/80(x is scope)
- C. FF7x:740:2001:DB8:FEED::/96(x is scope)
- D. FF7x:740:2001:DB8:FEED::/80(x is scope)

**ANSWER: C**

**QUESTION NO: 3**

An Alcatel-Lucent 7750 SR is unable to locate a multicast source address in the multicast forwarding table. However, the source address is available in the unicast forwarding table.

Which statement best describes the default RPF check behavior of the 7750 SR?

- A. The RPF check will fail as PIM relies exclusively on the multicast forwarding table by default
- B. The RPF check will not fail, as by default PIM uses the multicast forwarding table first for RPF check, if not found in the multicast forwarding table then refers to unicast forwarding table
- C. The RPF check will not fail as PIM uses only the unicast forwarding table by default
- D. The RPF check will fail as the RPF check requires that the source address be present in both the unicast and multicast forwarding table
- E. Not enough information is provided to answer the question

**ANSWER: C**

## QUESTION NO: 4

Which features are introduced in IGMP version 2? (Choose two)

- A. Leave group message
- B. Report suppression is eliminated
- C. IGMP snooping
- D. TTL of 1 for IGMP messages
- E. Formalized IGMP Querier election

**ANSWER: A E**

## QUESTION NO: 5

What signaling protocol is used by a multicast receiver?

- A. IGMP
- B. PIM
- C. Either PIM or IGMP
- D. Both PIM and IGMP

**ANSWER: A**

## QUESTION NO: 6

Which of the following conditions triggers the S-PMSI construction in Draft Rosen?

- A. If multicast data exceeds the threshold set on the ingress PE, the S-PMSI is constructed.

- B. If multicast data exceeds the threshold set on the egress PE, the S-PMSI is constructed.
- C. If the number of interested receivers exceeds the threshold set on the egress PE, the S-PMSI is constructed.
- D. If the number of interested receivers exceeds the threshold set on the ingress PE, the S-PMSI is constructed.

**ANSWER: A**

## QUESTION NO: 7

Which of the following PIM messages are sent towards the RP? (Choose two)

- A. (\*, G) Join/Prune
- B. (S, G) Join/Prune
- C. Register Stop
- D. (S, G, rpt) Join/Prune

**ANSWER: A D**

## QUESTION NO: 8

Which of the following about MLD snooping is FALSE?

- A. MLD snooping enables switches to forward multicast data to specific hosts interested in the group.
- B. MLD snooping can co-exist with IGMP snooping in the same VPLS service.
- C. Once MLD snooping is enabled, the switch can snoop both MLDv1 and MLDv2 messages.
- D. MLD snooping snoops MLD report and done messages, but not query messages.

**ANSWER: D**

## QUESTION NO: 9

Click the exhibit.

```

*A:PE# show router bgp routes mvpn-ipv4 type spmsi-ad detail
=====
BGP MVPN-IPv4 Routes
=====
Route Type       : Spmsi-Ad
Route Dist.      : 65100:1
Originator IP    : 1.1.1.1
Source IP        : 192.168.1.2
Group IP         : 239.1.1.1
NextHop          : 1.1.1.1
From             : 1.1.1.1
Res. NextHop     : 0.0.0.0
Local Pref.      : 100
Aggregator AS    : None
Atomic Aggr.     : Not Atomic
Community        : target:65100:1
Cluster          : No Cluster Members
Originator Id    : None
Flags            : Used valid Best IGP
Route Source     : Internal
AS-Path          : NO AS-Path
VPRN Imported    : 1
Interface Name   : NotAvailable
Aggregator       : None
MED              : 0
Peer Router Id   : 1.1.1.1

PMSI Tunnel Attribute :
Tunnel-type          : PIM-SSM Tree   Flags           : Leaf not required
MPLS Label           : 0
Root-Node            : 1.1.1.1       P-Group          : 232.10.10.0
=====

```

According to the output shown, which of the following statements is FALSE?

- A. The S-PMSI is instantiated by GRE tunnels.
- B. The I-PMSI group address is 232.10.10.0.
- C. 192.168.1.2 is the IP address of the multicast source.
- D. The customer is sending multicast traffic to group 239.1.1.1.

**ANSWER: B**

#### QUESTION NO: 10

Which of the following are characteristics of the one to many model of multicast data delivery? (Choose two)

- A. Receivers are generally unknown by the source
- B. Receivers are generally known by each other
- C. Well suited for applications in which the receivers provide feedback to each other and the source
- D. There is a single data flow for each group on the source segment
- E. All devices are potentially capable of generating multicast data

F. Well suited for applications such as video on demand where each source sends a separate data stream to each of the many different receivers

**ANSWER: A D**

## QUESTION NO: 11

Select the statements that relate to the Source Path Tree in ASM. (Choose three)

- A. The RP is the root of the tree
- B. The multicast source is the root of the tree
- C. It is represented by (\*, G) entries
- D. It is represented by (S, G) entries
- E. The path between receiver and source is always the shortest path
- F. The Source Path Tree cannot be created without the RP
- G. It is the initial forwarding path created

**ANSWER: B D E**

## QUESTION NO: 12

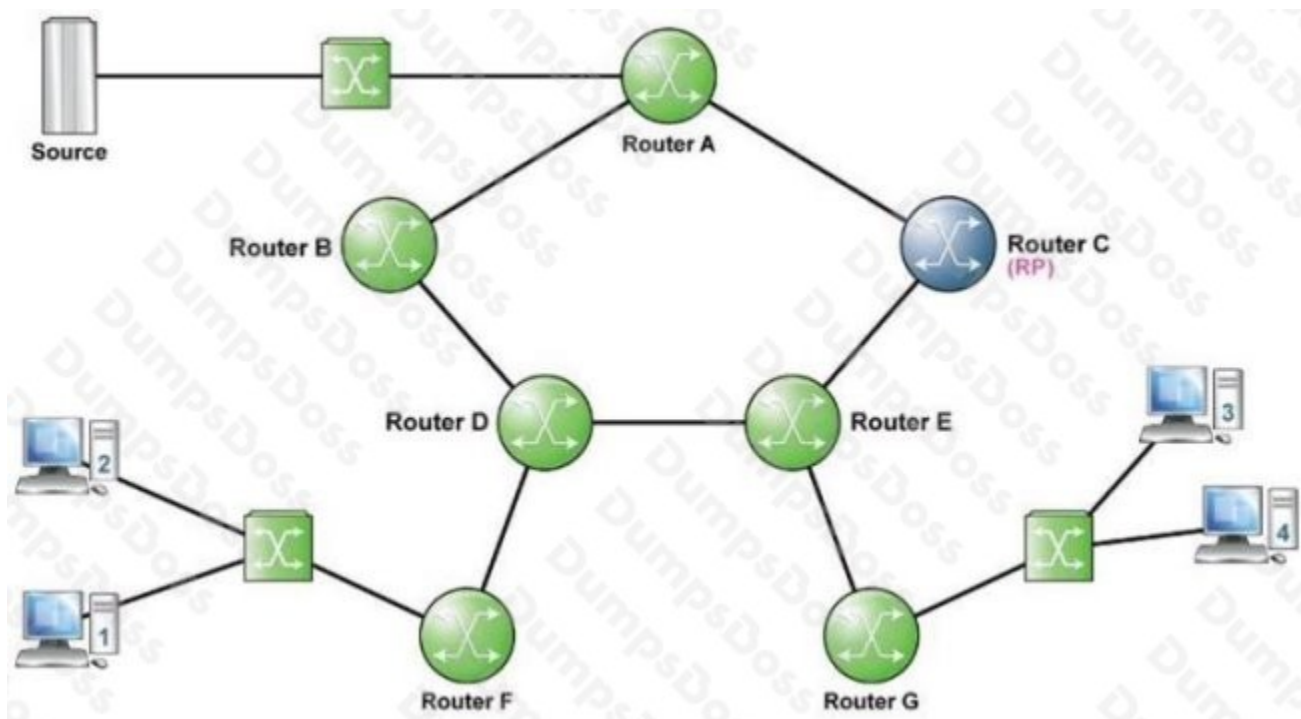
Which of the following are NOT characteristics of the many to many model of multicast data delivery? (Choose two)

- A. Receivers are generally unknown by the source
- B. Receivers are generally known by each other since any receiver may be a source
- C. Well suited for applications in which the receivers provide feedback to each other and the source
- D. All devices are potentially capable of generating multicast data
- E. Well suited for applications such as video on demand where each source sends a separate data stream to each of the many different receivers

**ANSWER: A E**

## QUESTION NO: 13

Refer to the following exhibit.



Assuming all links have an equal metric in the IGP, where will Source Path Tree have been created if Receiver 2 and Receiver 3 have joined the multicast group and the source is sending and the switchover has occurred? (Choose two)

- A. Router F-D-B-A
- B. Router G-E-C-A
- C. Router C-E-D-B-A
- D. Router G-E-C
- E. Router F-D-E-C

**ANSWER: A B**

## QUESTION NO: 14

Which of the following PIM messages are sent towards RP? (Choose two)

- A. (\*, G) Join/Prune
- B. (S,G) Join/Prune
- C. Register Stop
- D. (S, G, rpt) Join/Prune

**ANSWER: A D**

## QUESTION NO: 15

Which of the following statements about Mrouter port is false?

- A. Mrouter port is indicated by (\*\*) entry in the MFIB
- B. Mrouter port can be configured manually
- C. A port on which any type of IGMP message is received will be set as an mrouter port
- D. IGMP reports will only be forwarded out of mrouter ports once igmp-snooping is enabled in the vpls service

**ANSWER: C**