

# DUMPSBOSS.

**ISTQB-BCS Certified Tester Foundation Level**

**BCS ISEB-SWT2**

**Version Demo**

**Total Demo Questions: 15**

**Total Premium Questions: 338**

**Buy Premium PDF**

**<https://dumpsboss.co>**

**[support@dumpsboss.co](mailto:support@dumpsboss.co)**

**support@dumpsboss.co**  
**dumpsboss.co**

## Topic Break Down

Topic	No. of Questions
Topic 1, Scenario 3 "Tool Selection and Implementation"	2
Topic 2, Scenario 4, V1 "Test Management Tool"	5
Topic 3, Scenario 4, V2 "Test Management Tool"	4
Topic 4, Scenario 5, V1 "Human Resource System"	3
Topic 5, Scenario 5, V2 "Human Resource System"	2
Topic 6, Scenario 6, V1 "Independent Test Team"	4
Topic 7, Scenario 6, V2 "Independent Test Team"	3
Topic 8, Topic 10 Scenario 6, V3 "Independent Test Team"	1
Topic 9, Scenario 6, V4 "Independent Test Team"	2
Topic 10, Scenario 7 "Test Estimation"	4
Topic 11, Scenario 8, V1 "Test Process Improvement"	4
Topic 12, Scenario 8, V2 "Test Proems Improvement'	2
Topic 13, Scenario 9 "Test Management Documentation"	4
Topic 14, Scenario 10, V1 "Online Application"	2
Topic 15, Scenario 10, V2 "Online Application"	1
Topic 16, , Scenario 10, V3 "Online Application"	4
Topic 17, Scenario 11 "Incident Management"	1
Topic 18, Scenario 12 "Automatic Teller Machine (ATM)"	4
Topic 19, Topic 21, Mix Questions Set A	154
Topic 20, Topic 22, Mix Questions Set B	80
Topic 21, Topic 23, Mix Questions Set C	40
Topic 22, Mixed Questions	12
<b>Total</b>	<b>338</b>

## QUESTION NO: 1

Identify THREE items that would be part of the work-breakdown structure showing the key testing activities for the acceptance test project. 2 credits (for 2 out of 3 correct 1 credit)

- A. Test planning, test case preparation and test execution for each of the four iterations
- B. Work should be explicitly allocated to test completion, test management, installation and to training on using the system
- C. Activities to deploy the system in the user environment
- D. Regression testing in the second, third and fourth iterations
- E. Development activities for unit and integration testing
- F. Reviews on requirements documentation
- G. Defining test environment requirements for system testing

**ANSWER: A B D**

## QUESTION NO: 2

Which of the following characteristics is most likely to promote effective software testing? [K1]

- A. Independence from the production process
- B. A belief that programmers always make mistakes
- C. Knowledge of the number of defects typically found in a program
- D. Confidence that the next stage will find defects missed at this stage

**ANSWER: A**

## QUESTION NO: 3

Identify the THREE types of formal peer reviews that can be recognized. 1 credit

- A. Inspection
- B. Management review
- C. Walkthrough
- D. Audit
- E. Technical review

F. Informal review

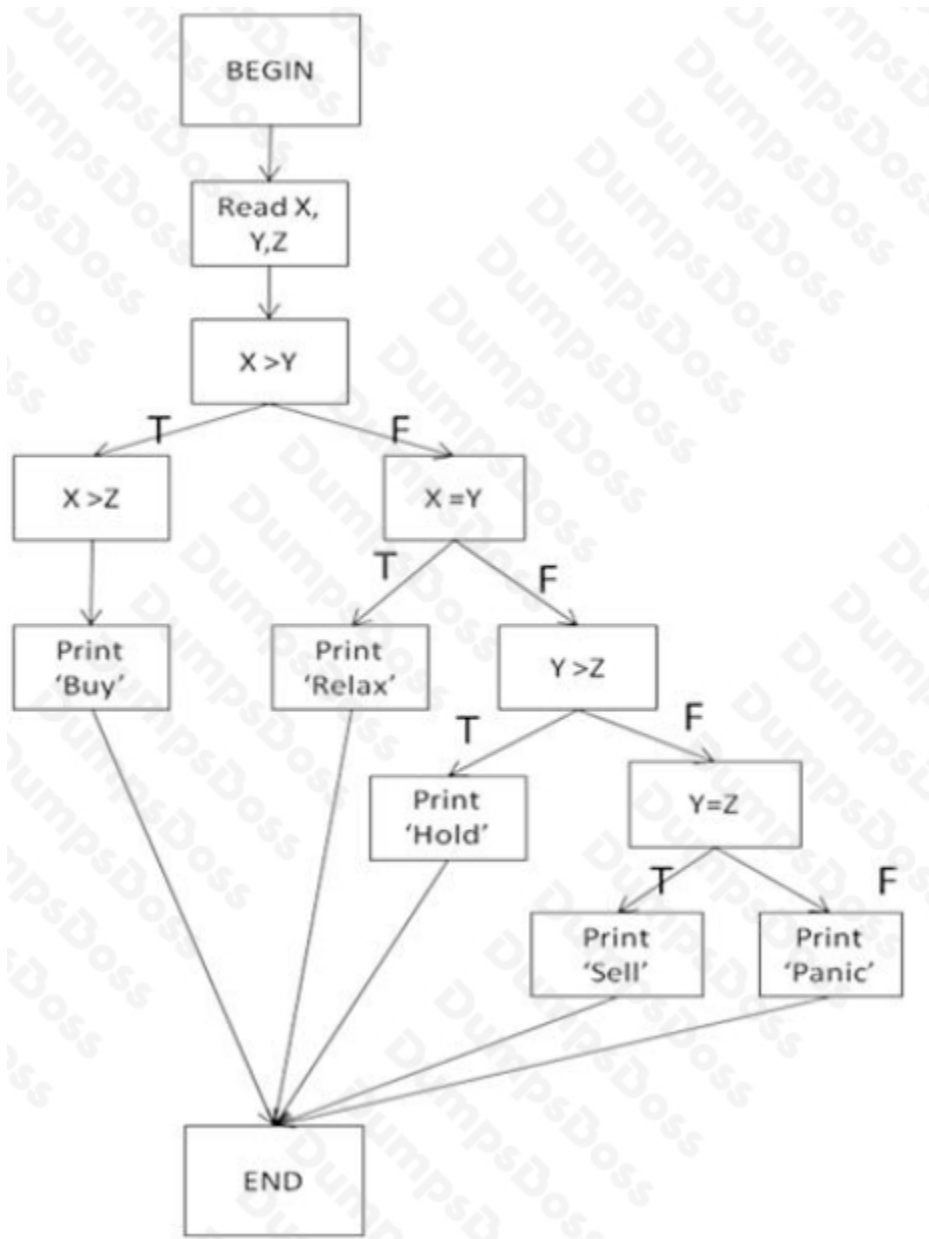
G. Assessment

**ANSWER: A C E**

## QUESTION NO: 4

Which of the following test cases will ensure that the statement 'Print 'Hold'' is exercised? [K3]

Refer to the exhibit



- A. X=2, Y=2, Z=2
- B. X=2, Y=3, Z=4
- C. X=2, Y=4, Z=3
- D. X=4, Y=3, Z=2

**ANSWER: C**

## QUESTION NO: 5

The introduction of reviews and inspections has often failed as a process improvement action. Identify the THREE most important measures that should be taken to reduce the risk that this test process improvement will fail. 2 Credits (for 2 out of 3 correct 1 credit)

- A. Process ownership and experienced moderators who drive the inspection process.
- B. Management support
- C. Training of those involved
- D. The availability of stands and processes
- E. Usage of a more traditional software development lifecycle
- F. Alignment with software process improvement
- G. Using a reference model, e.g. TMMi

**ANSWER: A B C**

## QUESTION NO: 6

What other details should be included in the following incident report when it is first submitted?

Date of Issue: 23/11/05

Severity: P1

Build: Version15.6

Details: Expected field to be limited to 15 chars, able to enter 27

- A. Suggested solution, priority and number of defects assigned to this developer.
- B. Status of the incident, degree of impact, Test Case Number.
- C. History, related defects and expected fix time.
- D. Line of code, number of defects found, time of day.

**ANSWER: B**

## QUESTION NO: 7

Which is not the fundamental test process?

- A. Planning and control
- B. Test closure activities
- C. Analysis and design
- D. None

**ANSWER: D**

## QUESTION NO: 8

Which of the following type of defect would NOT be typically found by using a static analysis tool?

- A. A variable is defined but is then not used
- B. A variable is used in a calculation before it is defined
- C. A variable has the wrong numeric value passed into it
- D. A variable is used but not declared

**ANSWER: C**

## QUESTION NO: 9

Which TWO of the review types below are the BEST fitted (most adequate) options to choose for reviewing safety critical components in a software project? Select 2 options.

- A. Informal review.
- B. Management review.
- C. Inspection.
- D. Walkthrough
- E. Technical Review

**ANSWER: C E**

## QUESTION NO: 10

Model characteristics:

Which THREE of the below mentioned characteristics relate to TMMi? 1 credit

- A. 5 maturity levels
- B. Focussed on higher level testing
- C. 20 key areas
- D. Highly related to CMMI
- E. Continuous model
- F. Staged model
- G. Focussed on component and integration testing
- H. Is build around 12 critical testing processes

**ANSWER: A D F**

## QUESTION NO: 11

Instead of having an independent test team within the company, the company is considering to outsource testing. What are THREE key challenges that are typical for outsourcing? 1 credit

- A. Test environment more complex
- B. Define expectation for tasks and deliverables
- C. Clear channels of communications
- D. Possibly different cultures
- E. Testing of non-functional requirements
- F. Audit trail from requirements to test cases
- G. Applying test automation

**ANSWER: B C D**

## QUESTION NO: 12

Independent Verification & Validation is:

- A. Done by the Developer
- B. Done by the Test Engineers

- C. Done By Management
- D. Done by an Entity Outside the Project's sphere of influence

**ANSWER: D**

## QUESTION NO: 13

Which of the following would be the TWO most appropriate examples of entry criteria documented in the system integration test plan? 2 credits

- A. The percentage of decision coverage achieved during unit testing.
- B. The availability of the latest version of the capture-replay tool (for testing the interface with the newly developed test management tool).
- C. The sign-off of a performance test software release note (test item transmittal report) by both development and testing showing that system performance meets the specified acceptance criteria.
- D. The percentage of acceptance test procedures scheduled for execution.
- E. The percentage of requirements coverage achieved during system integration test.

**ANSWER: A B**

## QUESTION NO: 14

In a system designed to work out the employee tax to be paid:

- \_ An employee has \$4,000 of salary tax free.
- \_ The next \$1,500 is taxed at 10%.
- \_ The next \$28,000 after that is taxed at 22%.
- \_ Any further amount is taxed at 40%.

Which of these is a valid Boundary Value Analysis test case?

- A. \$28,000
- B. \$1,500
- C. \$33,501
- D. \$5,000

**ANSWER: C**

## QUESTION NO: 15

Which of the following options describe the causal chain in the correct sequence?

- A. Error, fault, failure
- B. Fault, bug, mistake
- C. Mistake, failure, fault
- D. Failure, bug, error

**ANSWER: A**