

DUMPSBOSS.

Integrating Protected HPE Storage Solutions

HP HPE0-J50

Version Demo

Total Demo Questions: 10

Total Premium Questions: 68

Buy Premium PDF

<https://dumpsboss.co>

support@dumpsboss.co

support@dumpsboss.co
dumpsboss.co

QUESTION NO: 1

Refer to the exhibit.



```
Administrator: Command Prompt - cli
Use setclienv command to change the table format options.
BB2 cli>
13:15:10 02/20/2015
node,cpu user sys idle intr/s ctxt/s
2,0      0  0 100
2,1      0  0 100
2,2      0  1  99
2,3      0  0 100
2,total  0  0 100    950    1359
3,0      0  0 100
3,1      0  1  99
3,2      0  0 100
3,3      0  0 100
3,total  0  0 100    1961    3379
Press the enter key to stop...
13:15:12 02/20/2015
node,cpu user sys idle intr/s ctxt/s
2,0      0  0 100
2,1      0  1  99
2,2      0  2  98
2,3      0  2  99
```

A customer wants to implement compression on an HPE 3PAR system and is concerned about potential bottlenecks on the CPU.

Which CLI command can be used to display the CPU utilization and create a performance baseline?

- A. perfcpu
- B. cpustat
- C. showcpu
- D. statcpu

ANSWER: D

Explanation:

Reference: <https://support.hpe.com/hpsc/doc/public/display?docId=c04204279>

QUESTION NO: 2

Refer to the exhibit.

```

      -Ubluses-      -Usage-      -Uz-      -<MB>
      Warrz UU TPUU  Usr Srp  Total Used  Total Used  Total Used
0  C7_FC_R1      0 0 0 0 0 0 0 0 0 0 0 0
1  C7_SSD_R1     0 0 0 0 0 0 0 0 0 0 0 0
2  C7_FC_RS     0 0 0 0 0 0 0 0 0 0 0 0
3  C9_FC_RS     0 0 0 0 0 0 0 0 0 0 0 0
4  G1_RAIDS_FC  1 0 1 0 1 0 512 512 32512 512 8192 128
8  G2_Basic_Lab_Virtual_Cop_NL  1 0 1 0 1 0 512 512 32512 512 8192 128
6 total
BB2 cliz

```

A storage integrator is examining the configuration of an HPE 3PAR storage system using CLI. Which command can be used to display a list of common provisioning groups starting with substring R5 in the system?

- A. showcpg R5*
- B. cpg show | grep ^R5
- C. cpg | grep R5*
- D. cmore showcpg -l R5*

ANSWER: A

Explanation:

Reference: <https://support.hpe.com/hpsc/doc/public/display?docId=c04204279>

QUESTION NO: 3

A customer wants to expand their SAN environment, which is based on B-series FC switches. They have a virtualized environment and two HPE 3PAR StoreServ arrays.

Which tools can be used by the Integrator to check the health of the SAN environment before starting the expansion and after finishing? (Choose two.)

- A. HPE SAN Network Advisor
- B. HPE Complete AntemetA 3PAR Vision
- C. Brocade SAN Health
- D. HPE Enterprise Fabric Management Suite
- E. HPE Central Management Console

ANSWER: C E

QUESTION NO: 4

A storage integrator is validating an HPE 3PAR StoreServ implementation. The integrator created a volume in the HPE 3PAR StoreServ Management Console (SSMC) and needs to verify read/ write access from a Linux operating system.

Which steps are part of the verification process? (Choose two.)

- A. Select Hosts under the Servers menu section, and click Create server.
- B. Select the volume in the Virtual Volumes section. and click Map Volume in the Actions menu.
- C. Select the host in the Servers section, and click Add permission in the Actions menu.
- D. Select the volume in the Virtual Volumes section, and click Export in the Actions menu.
- E. Select Hosts in the Block Persona menu section, and click Create host.

ANSWER: A B

QUESTION NO: 5

Which command can be used to display license information on an HPE StoreOnce system?

- A. license show
- B. info license
- C. license display
- D. show licenses

ANSWER: A

Explanation:

Reference: <https://developer.hpe.com/blog/using-the-ssmcli-hpe-3par-ansible-module-withvirtual-domains>

QUESTION NO: 6

A storage integrator is creating a domain in the 3PAR StoreServ Management Console (SSMC). Which settings of a 3PAR virtual domain have to be configured? (Choose two.)

- A. Name
- B. OpenLDAP server
- C. Active Directory Domain Controller
- D. Storage Controller
- E. Storage System

ANSWER: A E

QUESTION NO: 7

A storage integrator is implementing an HPE 3PAR StoreServ system and connecting several storage volumes to a customer's VMware farm. During the implementation, the customer reveals that their legacy backup solution for protecting virtual machines does not provide a satisfactory RTO (recovery time objective). A recent implementation of new StoreOnce appliances did not fully solve the problem.

Which HPE solution could the integrator demonstrate to address the customer's RTO concerns?

- A. HPE 3PAR StoreServ Management Console
- B. HPE Complete iTernity iCAS
- C. HPE 3PAR Integrated Management Console
- D. HPE Recovery Manager Central for VMware

ANSWER: D

Explanation:

Reference: <https://assets.ext.hpe.com/is/content/hpedam/documents/4aa5-5000-5999/4aa55864/4aa5-5864enw.pdf>

QUESTION NO: 8

A customer has two HPE StoreVirtual VSA instances installed on VMware vSphere hosts, 3TB of data allocated for both with 4TB VSA license. The customer has purchased an HPE StoreVirtual VSA 2014 Software Upgrade 4TB to 10TB upgrade license. The data store size is increased from 3TB to 10.5TB for both VMware servers.

What is required to make the newly-added capacity available? (Choose two.)

- A. The VSA appliance needs to be restarted to rescan added storage and expand VSA RAID with the new capacity.
- B. The upgrade license requires that the VSA appliance is redeployed.
- C. The integrator must remove the current RAID configuration and create a new one after adding more storage to the VSA appliance.
- D. The VSA virtual appliance requires more memory and CPU resources.
- E. The VMware vmdk file needs to be extended from 3TB to 10TB for each VSA appliance. Then, VSA will detect the additional storage.

ANSWER: B E

Explanation:

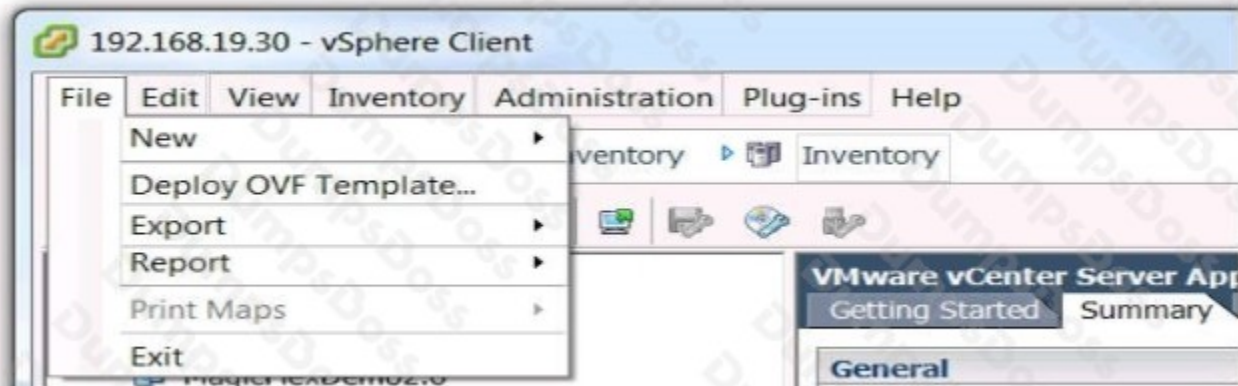
Reference: <https://h20195.www2.hpe.com/v2/GetPDF.aspx%2Fc04111621.pdf>

QUESTION NO: 9 - (HOTSPOT)

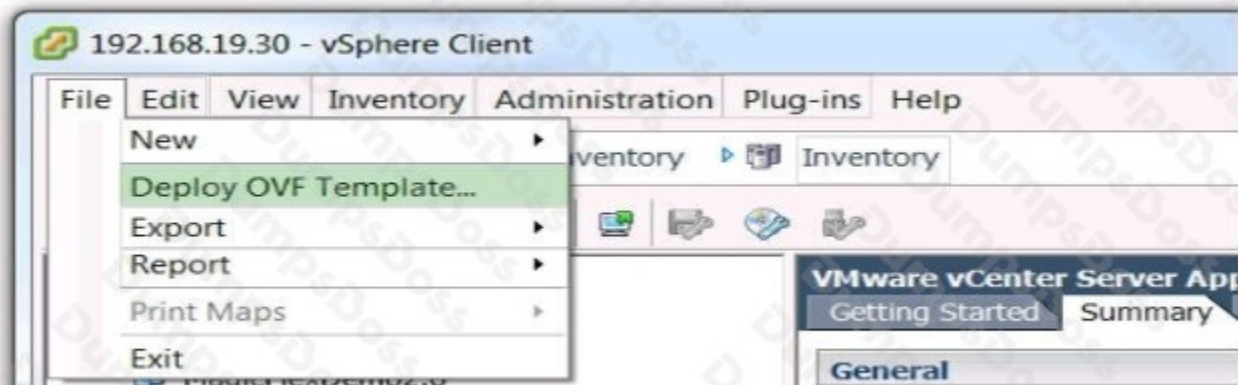
HOTSPOT

Click the menu option a storage integrator will use to install a new StoreOnce VSA solution.

Hot Area:



ANSWER:



Explanation:

Reference: https://h20628.www2.hp.com/km-ext/kmcsdirect/emr_na-a00058155en_us-1.pdf

QUESTION NO: 10

A customer has the following components installed and running:

- HPE 3PAR StoreServ 8400 with two nodes
- three SFF drive shelves
- FC-based host connections

- a mixture of SSDs and SAS HDDs

The task is to expand the solution with two nodes and another three SFF drive shelves, as well as SSDs and SAS HDDs.

What must be checked at the customer site before beginning the installation?

- A.** if there is space for the additional three SFF drive shelves adjacent to the existing drive shelves
- B.** if there is space for the second node pair adjacent to the first node pair
- C.** if there is the required number of High Density Active Optical Cables to connect the two node pairs
- D.** if the license for enabling the second node pair is installed before starting the expansion

ANSWER: A