

# DUMPSBOSS.

## Wireshark Certified Network Analyst Practice Exam

Wireshark WCNA

Version Demo

Total Demo Questions: 10

Total Premium Questions: 100

Buy Premium PDF

<https://dumpsboss.co>

[support@dumpsboss.co](mailto:support@dumpsboss.co)

support@dumpsboss.co  
dumpsboss.co

## QUESTION NO: 1

Time reference packets are permanently given a timestamp of 00:00:00. When you close and reopen the trace file the time reference information is retained.

- A. True
- B. False

ANSWER: B

## QUESTION NO: 2

An unusually high number of RSTs or a high number of SYN/ACKs with no related data transfer is a strong indication that a TCP scan is underway.

- A. True
- B. False

ANSWER: A

## QUESTION NO: 3

The Protocol Hierarchy Statistics window helps identify unusual protocols and applications in captured traffic.

- A. True
- B. False

ANSWER: A

## QUESTION NO: 4

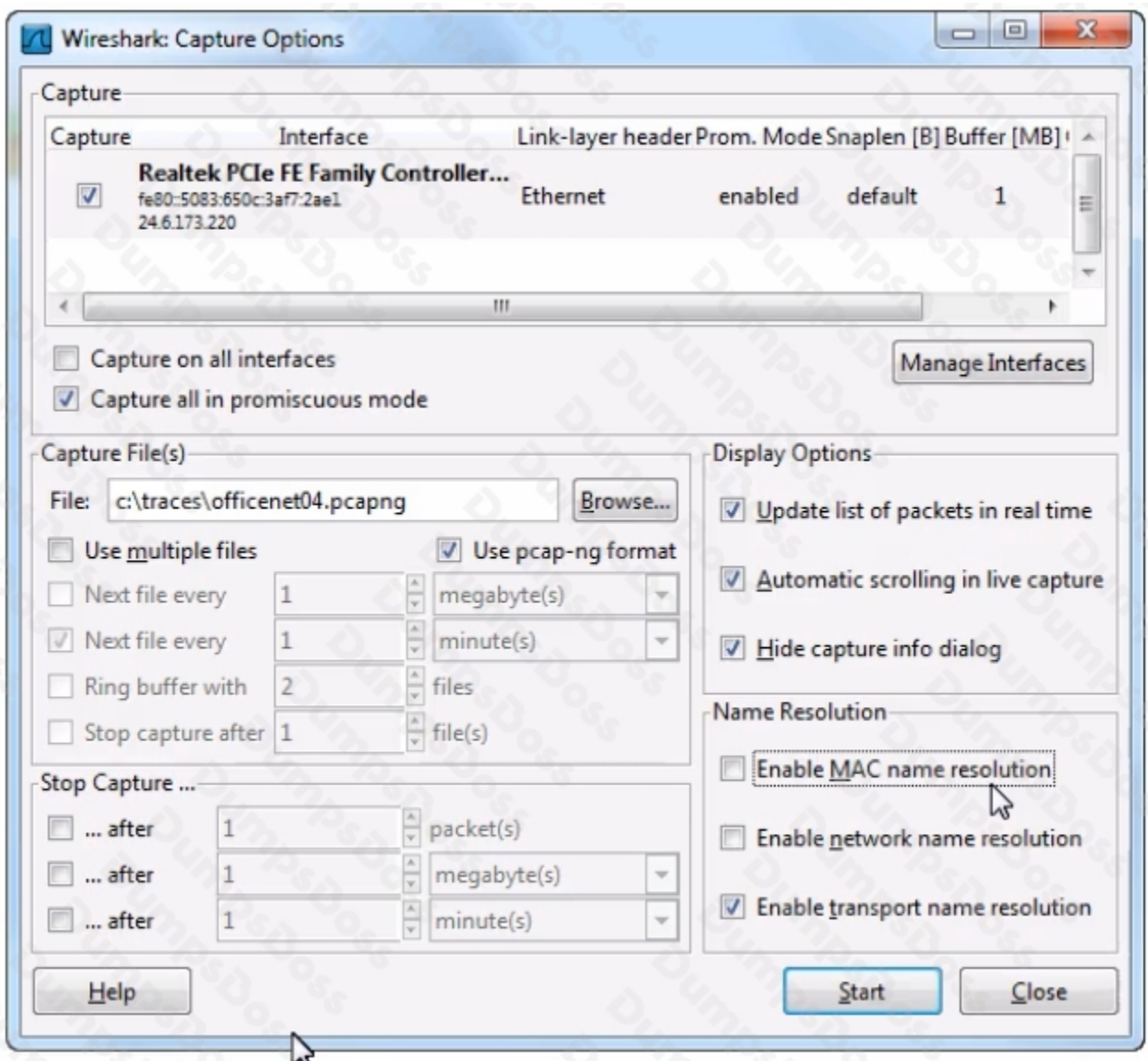
Which name resolution process translates port numbers to service names if they are listed in Wireshark's services file?

- A. SMI name resolution
- B. network name resolution
- C. transport name resolution

D. MAC address name resolution

ANSWER: C

QUESTION NO: 5



Which statement about the Capture Options window shown is correct?

- A. Wireshark will resolve IP addresses to host names.
- B. Wireshark will scroll to display the most recent packet captured.
- C. Wireshark will attempt to resolve OUI values for all MAC addresses.

D. Wireshark will automatically stop capturing packets after two files have been saved.

**ANSWER: B**

## QUESTION NO: 6

The UDP header checksum is optional.

- A. True
- B. False

**ANSWER: A**

## QUESTION NO: 7

DHCP is based on BOOTP.

- A. True
- B. False

**ANSWER: A**

## QUESTION NO: 8

```
⊕ Frame 229: 712 bytes on wire (5696 bits), 712 bytes captured (5696 bits) on interface 0  
⊕ Ethernet II, Src: LiteonTe_58:2b:0d (00:22:5f:58:2b:0d), Dst: D-Link  
⊕ Internet Protocol, Src: 192.168.0.111 (192.168.0.111), Dst: 68.142.216.111  
⊕ Transmission Control Protocol, Src Port: 7409 (7409), Dst Port: http  
⊕ Hypertext Transfer Protocol  
  ⊕ GET / HTTP/1.1\r\n  
    ⊕ [Expert Info (Chat/Sequence): GET / HTTP/1.1\r\n      Request Method: GET  
      Request URI: /\n      Request Version: HTTP/1.1  
      [truncated] Accept: image/gif, image/jpeg, image/pjpeg, application/javascript, application/xml, application/xhtml+xml, application/*+xml, text/css, text/javascript, text/xml, text/plain, text/html, *, */\r\n      Accept-Language: en-us\r\n      User-Agent: Mozilla/4.0 (compatible; MSIE 8.0; Windows NT 6.0; WOW64; Trident/4.0; .NET4.0E; .NET4.0; .NET CLR 3.5.30729; .NET CLR 3.0.4506.2; .NET CLR 2.0.50727; .NET CLR 1.1.4322.2; .NET CLR 1.0.3705.2; .NET CLR 1.0.29095.2)\r\n      Accept-Encoding: gzip, deflate\r\n      Host: www.wiresharktraining.com\r\n      Connection: Keep-Alive\r\n      \r\n
```

Which statement about this HTTP packet is correct?

- A. This packet was sent from an HTTP server.
- B. The packet contains a request for a graphic file.
- C. This packet contains an invalid HTTP Request Method.
- D. This packet indicates an HTTP client is browsing www.wiresharktraining.com.

**ANSWER: D**

## QUESTION NO: 9

Columns can be reordered by dragging them into their new positions directly in the Packet List pane.

- A. True
- B. False

**ANSWER: A**

## QUESTION NO: 10

Which statement about the TCP recovery process is true?

- A. Packet loss recovery is always started by the client.

- B. The window size field is used in the packet loss recovery process.
- C. TCP hosts attempt three retransmissions before terminating the connection.
- D. Retransmitted packets use the same sequence number as the original lost packet.

**ANSWER: D**