

DUMPSBOSS.

ArchiMate 3 Part 1 Examination

The Open Group OGA-031

Version Demo

Total Demo Questions: 5

Total Premium Questions: 40

Buy Premium PDF

<https://dumpsboss.co>

support@dumpsboss.co

support@dumpsboss.co
dumpsboss.co

QUESTION NO: 1

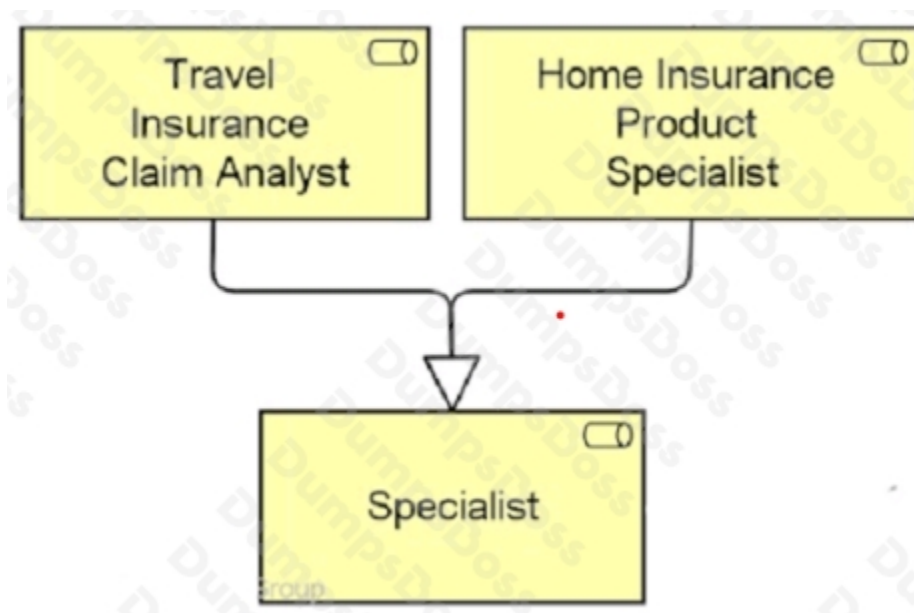
In the Application Layer metamodel, what is the relationship type from an application service to a data object?

- A. Realization
- B. Composition
- C. Access
- D. Aggregation

ANSWER: C

QUESTION NO: 2

Consider the following diagram:



Which of the following correctly describes this diagram?

- A. The two business roles Travel Insurance Claim Analyst and Home Insurance Product Specialist are specializations of the business role Specialist
- B. The business role Specialist approves all claims handled by the two business roles Travel Insurance Claim Analyst and Home Insurance Product Specialist
- C. The two business roles Travel Insurance Claim Analyst and Home Insurance Product Specialist together realize the business role Specialist.

D. The business role Specialist is an aggregation of the two business roles Travel Insurance Claim Analyst and Home Insurance Product Specialist.

ANSWER: A

Explanation:

Based on the ArchiMate 3 documents or objectives, the diagram uses a specialization relationship to indicate that the two business roles Travel Insurance Claim Analyst and Home Insurance Product Specialist are more specific versions of the business role Specialist. A specialization relationship is a type of structural relationship that indicates that an object is a specialization of another object. The notation for a specialization relationship is a solid line with an empty triangle at the end that points to the more general element.

[References: ArchiMate® 3.2 Specification, Chapter 4 Generic Metamodel, Section 4.1 Behavior and Structure Elements, Subsection 4.1.2 Structural Relationships 1](#); ArchiMate Specialization Relationship - ArchiMate Quick Guide - GitBook [2](#).

QUESTION NO: 3

Which statement describes how the Capability element is used?

- A. To represent an asset owned by an organization
- B. To represent what an enterprise has decided to do.
- C. To represent the relative worth, utility, or importance of a core element.
- D. To represent the ability that an active structure element possesses

To represent the ability that an active structure element possesses.

ANSWER: D

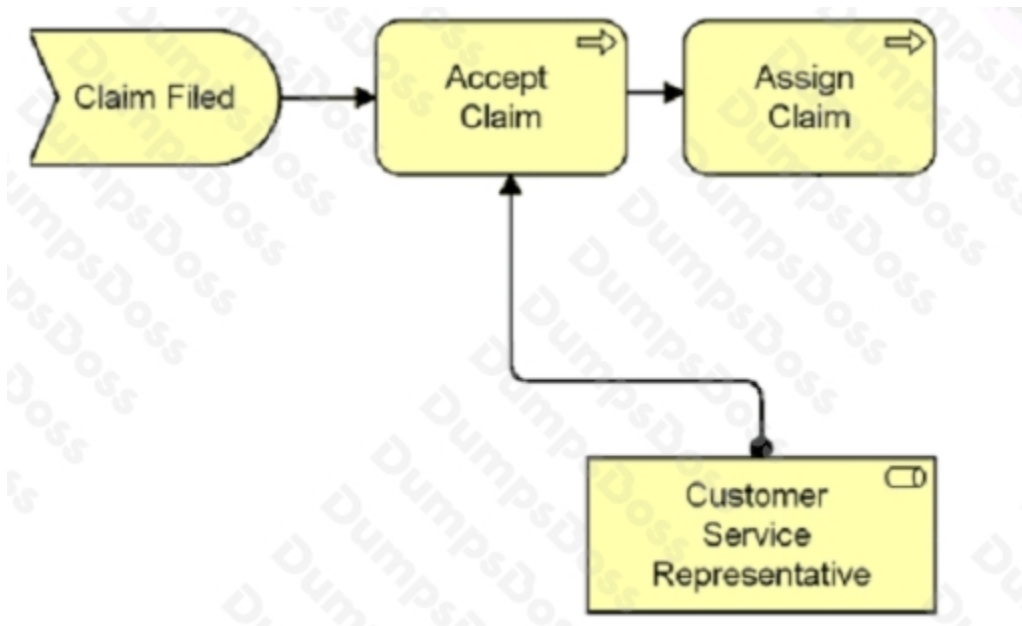
Explanation:

[According to the ArchiMate® 3.2 Specification1](#), a capability represents an ability that an active structure element, such as an organization, person, or system, possesses. [Capabilities are typically aimed at achieving some goal or delivering value by realizing an outcome1](#). Therefore, the correct answer is

- D. To represent the ability that an active structure element possesses.

QUESTION NO: 4

Consider the following diagram which shows part of the ArchiSurance Claims Administration:



Which of the following correctly describes this diagram?

- A. The event Claim Filed triggers the Accept Claim process which is serviced by the Customer Service Representative role before the Assign Claim process.
- B. The Claim Filed event assigns the Customer Service Representative to participate in the Accept Claim and Assign Claim processing.
- C. The information that flows from Claim Filed to Accept Claim and then to Assign Claim is reviewed by the Customer Service Representative role.
- D. Business event Claim Filed triggers a business process Accept Claim which in turn triggers an Assign Claim process.

Business event Claim Filed triggers a business process Accept Claim which in turn triggers an Assign Claim process. This is because the diagram shows a business event (Claim Filed) that initiates a business process (Accept Claim) which is performed by a business role (Customer Service Representative). The business process then triggers another business process (Assign Claim) which is also performed by the same business role. The diagram does not show any information flow or assignment relationships between the elements.

ANSWER: D

Explanation:

The correct answer is

D. Business event Claim Filed triggers a business process Accept Claim which in turn triggers an Assign Claim process. This is because the diagram shows a business event (Claim Filed) that initiates a business process (Accept Claim) which is performed by a business role (Customer Service Representative). The business process then triggers another business process (Assign Claim) which is also performed by the same business role. The diagram does not show any information flow or assignment relationships between the elements.

QUESTION NO: 5

Complete the sentence. The different layers of Enterprise Architectures that can be modeled with the ArchiMate language include Business, Application, and

- A. Data
- B. Strategy
- C. Information
- D. Technology

ANSWER: D

Explanation:

[According to the ArchiMate 3.2 Specification1](#), the ArchiMate core language defines a structure of generic elements and their relationships, which can be specialized in different layers. Three layers are defined within the ArchiMate core language as follows:

- The Business Layer depicts business services offered to customers, which are realized in the organization by business processes performed by business actors and roles.
- The Application Layer depicts application services that support the business, and the applications that realize them.
- The Technology Layer comprises both information and operational technology. You can model, for example, processing, storage, and communication technology in support of the application world and Business Layers, and model operational or physical technology with facilities, physical equipment, materials, and distribution networks.