

# DUMPSBOSS.

## Troubleshooting Cisco Data Center Infrastructure (300-615 DCIT)

Cisco 300-615

Version Demo

Total Demo Questions: 15

Total Premium Questions: 217

Buy Premium PDF

<https://dumpsboss.co>

[support@dumpsboss.co](mailto:support@dumpsboss.co)

support@dumpsboss.co  
dumpsboss.co

## Topic Break Down

Topic	No. of Questions
Topic 1, New Update	97
Topic 2, Network	47
Topic 3, Compute Platforms	34
Topic 4, Storage Network	0
Topic 5, Automation	19
Topic 6, Management and Operations	20
<b>Total</b>	<b>217</b>

## QUESTION NO: 1

A fabric interconnect fails to start, and the console displays the loader prompt. Which two actions resolve the issue? (Choose two.)

- A. Load an uncorrupt bootloader image.
- B. Load an uncorrupt kickstart image.
- C. Reconnect Layer 1 and Layer 2 cables between the FIs.
- D. Reformat the fabric interconnect.
- E. Load the correct version of the boot image.

**ANSWER: B E**

## QUESTION NO: 2

```
Nexus5k#show system internal vpcm info global | i Sticky|Reload
Sticky Master: TRUE
Reload timer started: FALSE
Reload restore configured: TRUE, timer :240
Nexus5k#
```

Refer to the exhibit. During a maintenance window of the Nexus switch pair, one of the Cisco Nexus chassis was brought offline for maintenance. The primary Cisco Nexus switch was stable during the maintenance window. After finishing the

tasks on the chassis, the administrator wanted to bring the second switch online. The administrator checked the status of the disconnected switch that was removed from the vPC during the maintenance. The engineer must connect the peer chassis seamlessly with the primary vPC peer without experiencing traffic interruption. Which action accomplishes this goal?

- A. Change the role priority, then connect the peer switch.
- B. Change the auto recovery to disabled, and enable auto recovery.
- C. Change the auto recovery timer to active if not already set, then re-establish the connectivity.
- D. Change the auto timer to a higher value, then connect the peer switch.

**ANSWER: D**

## QUESTION NO: 3

Refer to the exhibit.

```
N9K# show install inactive
Boot Image:
  NXOS Image: bootflash:///nxos.7.0.3.I7.3.bin

Inactive Packages:
  nxos.CSC000002_eth-n9k_ALL-1.0.0-7.0.3.I7.3.lib32_n9000

Inactive Base Packages:

N9K# show install active
Boot Image:
  NXOS Image: bootflash:///nxos.7.0.3.I7.3.1.bin

Active Packages:
  nxos.CSC000001_core-n9k_ALL-1.0.0-7.0.3.I7.3.lib32_n9000
```

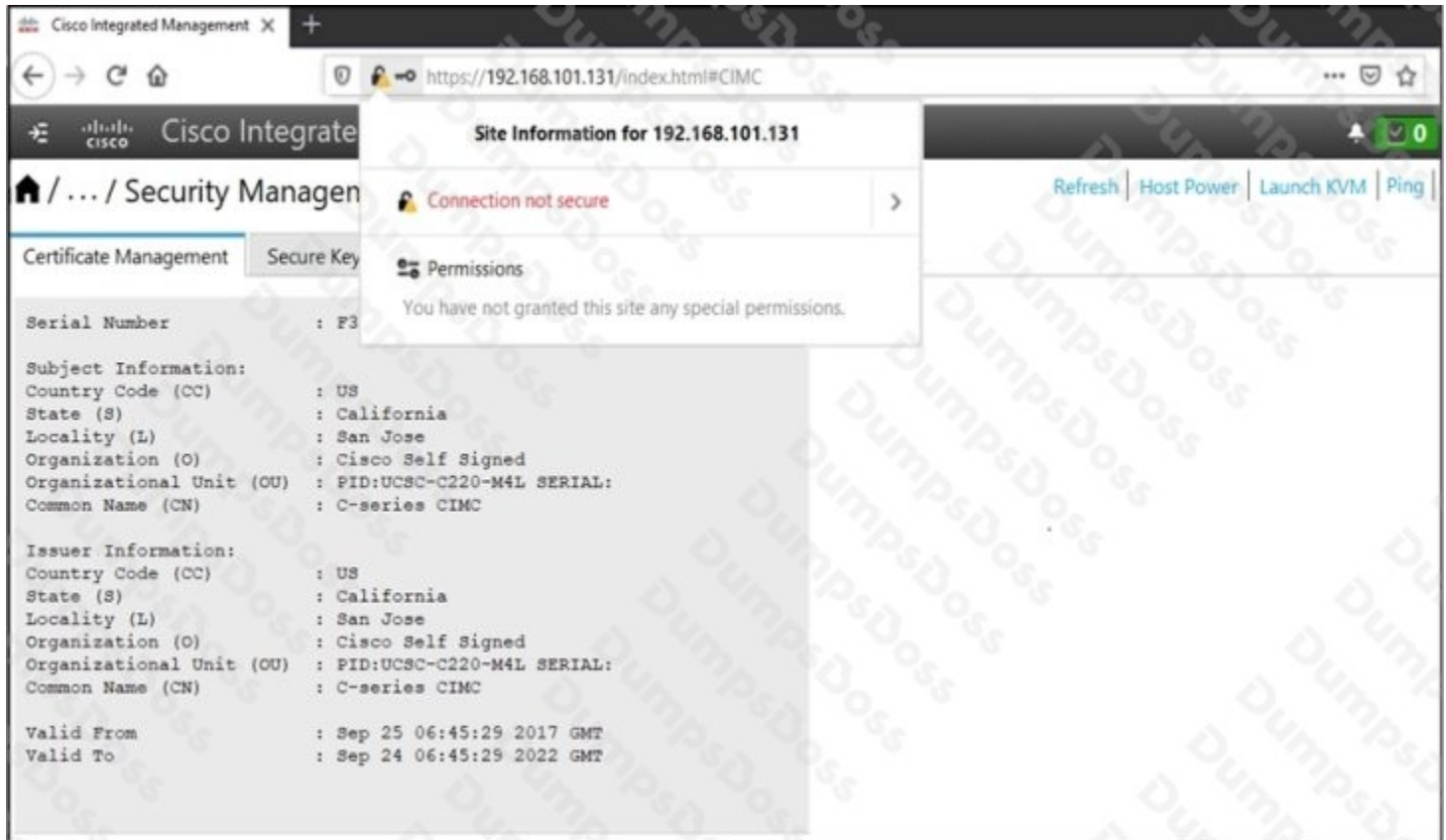
After an unexpected reload of the Cisco Nexus 9000 Series Switch, the network administrator noticed that one of the Software Maintenance Upgrades (SMU) images is inactive. The engineer must ensure that the package remains active after the switch is reloaded in the future. Which action accomplishes this goal?

- A. Commit the package using the install commit command.
- B. Save the running configuration after activating the package.
- C. Deactivate and uninstall the active core package.
- D. Copy the SMU package file on the bootflash.

**ANSWER: A**

## QUESTION NO: 4

Refer to the Exhibit.



An Engineer cannot log in to the Cisco IMC page of the Cisco UCS C220 server. Which action resolve the issue?

- A. Se the FQDN of the Cisco IMC webpage login page instead of the IP address for the connection to be secure.
- B. Use the DNS of the Cisco IMC webpage login page instead of the IP address for the connection to be secure.
- C. Replace the self-signed certificate that is installed on the Cisco IMC with a server certificate that is signed from the client corporate certificate.
- D. Replace the self-signed certificate that is installed on the Cisco IMC with a user certificate that is signed from the client corporate certificate.

**ANSWER: C**

## QUESTION NO: 5

Refer to the exhibit.

```
Unable to change server power state-MC
Error(-20): Management controller cannot or
failed in processing
request(sam:dme:ComputePhysicalTurnup:Execute
)

[ help ]# power
OP:[ status ]
Power-State: [ on ]
VDD-Power-Good: [ active ]
Power-On-Fail: [ inactive ]
Power-Ctrl-Lock: [ unlocked ]
Power-System-Status: [ Good ]
Front-Panel Power Button: [ Enabled ]
Front-Panel Reset Button: [ Enabled ]
OP-CCODE: [ Success ]
[ power ]#
```

An engineer monitors a Cisco UCS server logs and discovers a blade discovery issue. Which procedure resolves the issue?

- A. 1. Verify the server power module.  
2. Decommission the faulty module.  
3. Insert a new power module.  
4. Recommission the new module.
- B. 1. Verify that server platform power is failed  
2. Resolve the platform power issue.  
3. Reboot the server.  
4. Recommission the server.
- C. 1. Verify the FSM status on the server.  
2. Decommission the impacted server.  
3. Reset the slot where the server is located.  
4. Recommission the server.
- D. 1. Verify that the power on self-test operation is failed.  
2. Verify that the server firmware is corrupted.  
3. Decommission the server firmware  
4. Recommission the server with new firmware.

**ANSWER: C**

## QUESTION NO: 6

```
Switch-B# show vpc
vPC domain id: 34
Peer status : peer adjacency formed ok
vPC keep-alive status : peer is alive
Configuration consistency status : success
Per-vlan consistency status : success
Type-2 consistency status : success
vPC role : primary, operational secondary
Number of vPCs configured : 49
Peer Gateway : Enabled
Peer gateway excluded VLANs: -
Dual-active excluded VLANs : -
Graceful Consistency Check: Enabled
Auto-recovery status: Enabled (timeout = 240 seconds)
```

Refer to the exhibit. After a failover occurs, which two actions must be performed on Switch-B to manually preempt the operational primary role back to Switch-A? (Choose two.)

- A. Configure the local vPC role priority to have a lower value than Switch-A.
- B. Configure the local vPC role priority to have a higher value than Switch-A.
- C. Disable and then re-enable the vPC peer-keepalive link.
- D. Configure the local vPC role priority to have the same value as Switch-A.
- E. Disable and then re-enable the vPC peer link.

**ANSWER: B E**

## QUESTION NO: 7

A Cisco uCs C-Series Server powers off due to a power outage. The server should turn on when the power is restored with a fixed delay of 3 minutes. However, it remained powered off for more than 3 minutes after the engineer powered it back online. Which two actions resolve the issue (Choose two.)

- A. Configure the power-restore-policy.
- B. Configure the power restore last-state policy.
- C. Set the delay value to 180.
- D. Set the delay fixed value to 3.

E. Configure power sync policy.

**ANSWER: A C**

## QUESTION NO: 8

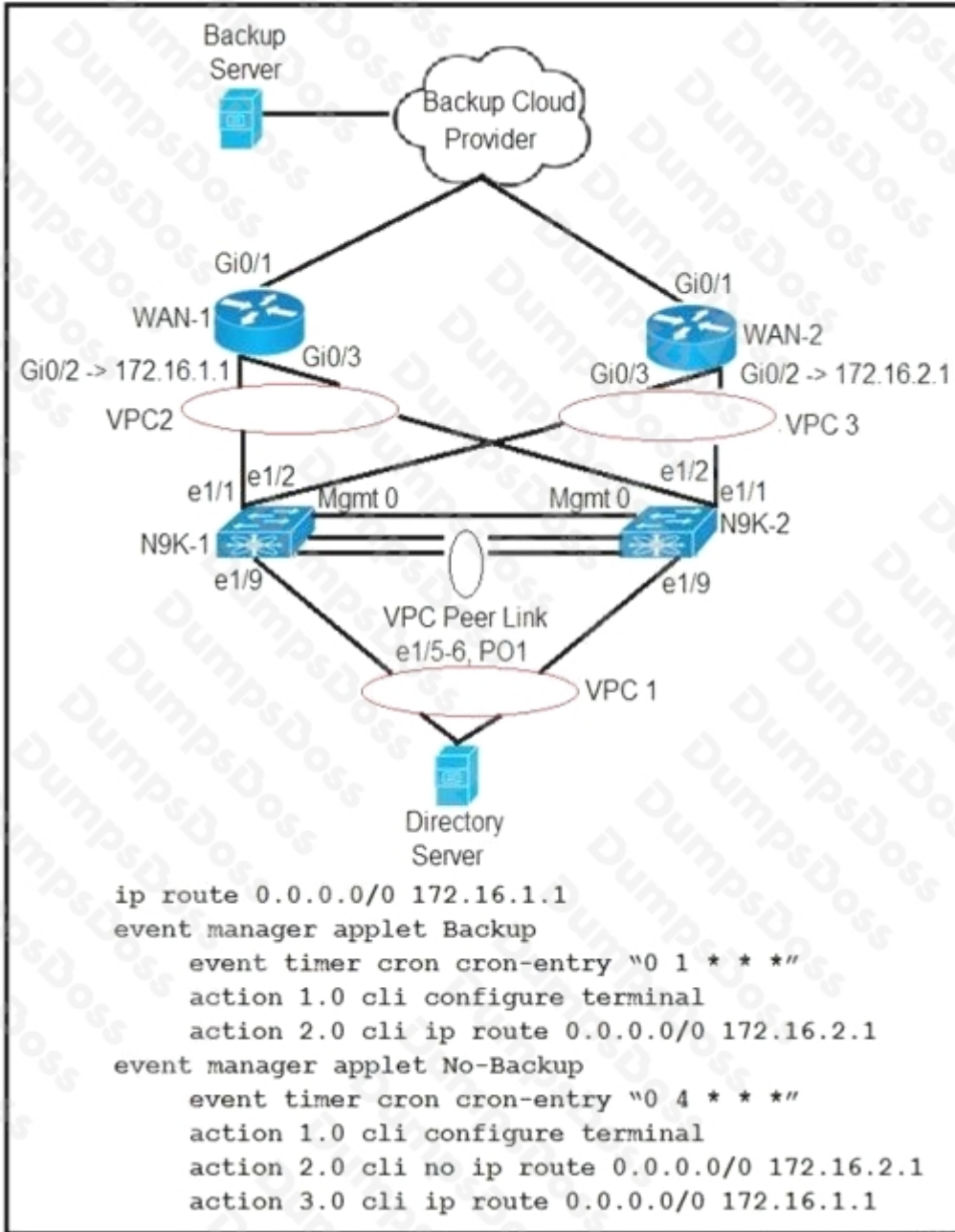
```
MDS-Core(config)# role name FSPF_Admin  
MDS-Core(config-role)# rule 1 deny config  
MDS-Core(config-role)# rule 2 permit config feature fspf
```

Refer to the exhibit. RBAC is configured on the MDS switch for a new SAN administrator engineer to work on the FSPF configuration. However, after the configuration is applied the engineer who was assigned the FSPF\_Admin role cannot perform any configuration changes. Which action resolves the issue?

- A. Write rule 2 before rule 1
- B. Remove rule 1 from the role
- C. Configure the switch license for RBAC
- D. Reload the switch

**ANSWER: A**

## QUESTION NO: 9



Refer to the exhibit. Partial configuration from N9K-1 and N9K-2 is included. The client has two WANs connected.

- WAN-1 is for normal business-day activities.
- WAN-2 is for server backups during nonworking hours of 1:00 a.m. to 5:00 a.m. daily.

The client says that at the scheduled time for backup, the data center server failed to use the WAN-2 link to back up the servers to the cloud backup system. What is the solution to this problem?

- A. The event timer must be written in epoch time format.
- B. The Cisco Nexus switch must be configured with one applet because a configuration with two applets will fail.

- C. The Cron entry must be configured without double quotes.
- D. The applet called "Backup" must include an action to remove the current static route.

**ANSWER: D**

## QUESTION NO: 10

A vPC Type-1 inconsistency between two vPC peers in a VXLAN EVPN setup is discovered. Which two actions need to be attempted to resolve the issue? (Choose two.)

- A. Configure the NVE interfaces to be Up on both switches.
- B. Set a different distributed gateway virtual MAC address.
- C. Set a different secondary IP addresses on NVE source-interface.
- D. Configure the same VNI to multicast group mapping.
- E. Set a different primary IP addresses on NVE source-interface.

**ANSWER: A D**

## QUESTION NO: 11

The screenshot displays the configuration page for a Cisco UCS Fabric Interconnect port. The 'Fault Summary' section shows 1 warning icon (yellow triangle) and 0 error (red X), 0 caution (yellow triangle), and 0 info (green triangle) icons. The 'Status' section shows 'Overall Status: Failed' with a warning icon, 'Additional Info: SFP validation failed', and 'Admin State: Enabled'. The 'Physical Display' section shows a port status indicator for port 15 in Slot 1, which is red (Fail). The 'Properties' section shows 'ID: 15' and 'Slot ID: 1'.

Refer to the exhibit. When an engineer inserts 8-Gb Fibre Channel SFP port 15 on a Cisco UCS Fabric Interconnect, the port fails. What is causing this issue?

- A. Port 15 is configured as an Ethernet port.
- B. Port 15 is configured for 4-Gb Fibre Channel.

- C. Port 15 is missing a license.
- D. The polarity of the fiber cable is reversed.

**ANSWER: B**

## QUESTION NO: 12

An engineer attempts to register Cisco UCS Manager to Cisco UCS Central, but the registration fails. The engineer can ping Cisco UCS Central from UCS Manager. Which two actions must the engineer attempt to resolve the problem? (Choose two.)

- A. Synchronize the date and time to NTP for Cisco UCS Central and the Cisco UCS domains.
- B. Apply the UCS Central license to UCS Central.
- C. Place Cisco UCS Manager on the same subnet as Cisco UCS Central.
- D. Allow port 443 between Cisco UCS Manager and Cisco UCS Central.
- E. Allow port 9443 between Cisco UCS Manager and Cisco UCS Central.

**ANSWER: A D**

## QUESTION NO: 13

An engineer implements a storage VDC, but it fails. Which two prerequisites must be in place before a storage VDC is implemented? (Choose two.)

- A. M Series module
- B. ESSENTIALS license
- C. STORAGE-ENT license
- D. FCoE license
- E. F Series module

**ANSWER: D E**

## QUESTION NO: 14

An engineer troubleshoots a fabric discovery failure. Which two requirements about switch connectivity must be verified to solve the problem? (Choose two.)

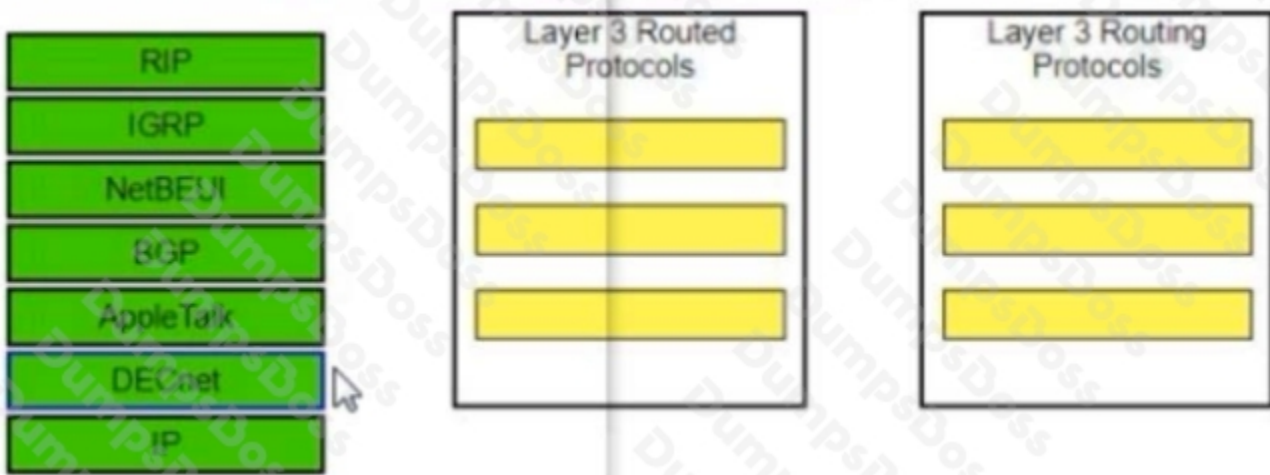
- A. A Cisco APIC must be attached to a spine node only.

- B. A Cisco APIC must be attached to leaf nodes.
- C. Spine nodes must connect to other spine nodes.
- D. A Cisco APIC must be dual-attached to two separate spine nodes.
- E. Leaf nodes must connect to spine nodes only.

**ANSWER: B E**

## QUESTION NO: 15 - (DRAG DROP)

Drag each item listed on the left to its proper category on the right Not all items will fit the categories.



**ANSWER:**

