

DUMPSBOSS.

Implementing Cisco Application Centric Infrastructure (300-620 DCACI)

Cisco 300-620

Version Demo

Total Demo Questions: 15

Total Premium Questions: 220

Buy Premium PDF

<https://dumpsboss.co>

support@dumpsboss.co

support@dumpsboss.co
dumpsboss.co

Topic Break Down

Topic	No. of Questions
Topic 1, New Update	89
Topic 2, ACI Fabric Infrastructure	45
Topic 3, ACI Packet Forwarding	17
Topic 4, External Network Connectivity	18
Topic 5, Integrations	13
Topic 6, ACI Management	29
Topic 7, ACI Anywhere	9
Total	220

QUESTION NO: 1

Which two dynamic routing protocols are supported when using Cisco ACI to connect to an external Layer 3 network? (Choose two.)

- A. iBGP
- B. VXLAN
- C. IS-IS
- D. RIPv2
- E. eBGP

ANSWER: A E

Explanation:

Reference: https://www.cisco.com/c/en/us/td/docs/switches/datacenter/aci/apic/sw/1-x/ACI_Best_Practices/b_ACI_Best_Practices/b_ACI_Best_Practices_chapter_010010.html

QUESTION NO: 2

A bridge domain for an EPG called "Web Servers" must be created in the Cisco APIC. The configuration must meet these requirements:

- Only traffic to known MAC addresses must be allowed to reduce noise.
- The multicast traffic must be limited to the ports that are participating in multicast routing.
- The endpoints within the bridge domain must be kept in the endpoint table for 20 minutes without any updates.

Which set of steps configures the bridge domain that satisfies the requirements?

A. Switch L2 Unknown Unicast to Flood.

Select the default Endpoint Retention Policy and set the Local Endpoint Aging to 20 minutes. Set Multicast Destination Flooding to Flood in Encapsulation.

B. Set L2 Unknown Unicast to Hardware Proxy.

Configure L3 Unknown Multicast Flooding to Optimized Flood.

Create an Endpoint Retention Policy with a Local Endpoint Aging Interval of 1200 seconds.

C. Multicast Destination Flooding should be set to Flood in BD.

Set L3 Unknown Multicast Flooding to Flood.

Select the default Endpoint Retention Policy with a Local Endpoint Aging Interval of 1200 seconds.

D. Select the ARP Flooding checkbox.

Create an Endpoint Retention Policy with a Remote Endpoint Aging Interval of 20 minutes. Set L3 Unknown Multicast

Flooding to Optimized Flooding.

ANSWER: B

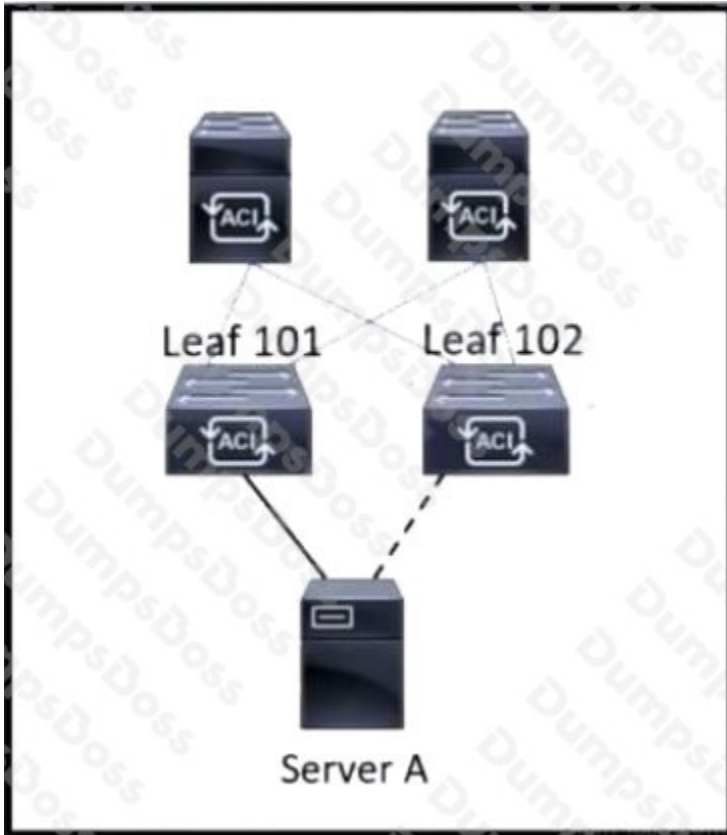
QUESTION NO: 3

Which two IP address types are available for transport over the ISN when they are configured from Cisco ACI Multi-Site Orchestrator? (Choose two.)

- A. Management IP of APICs
- B. Management IP of the MSO Node
- C. Anycast Overlay Multicast TEP
- D. MP-BGP EVPN Router-ID
- E. Common Pervasive Gateway

ANSWER: B D

QUESTION NO: 4

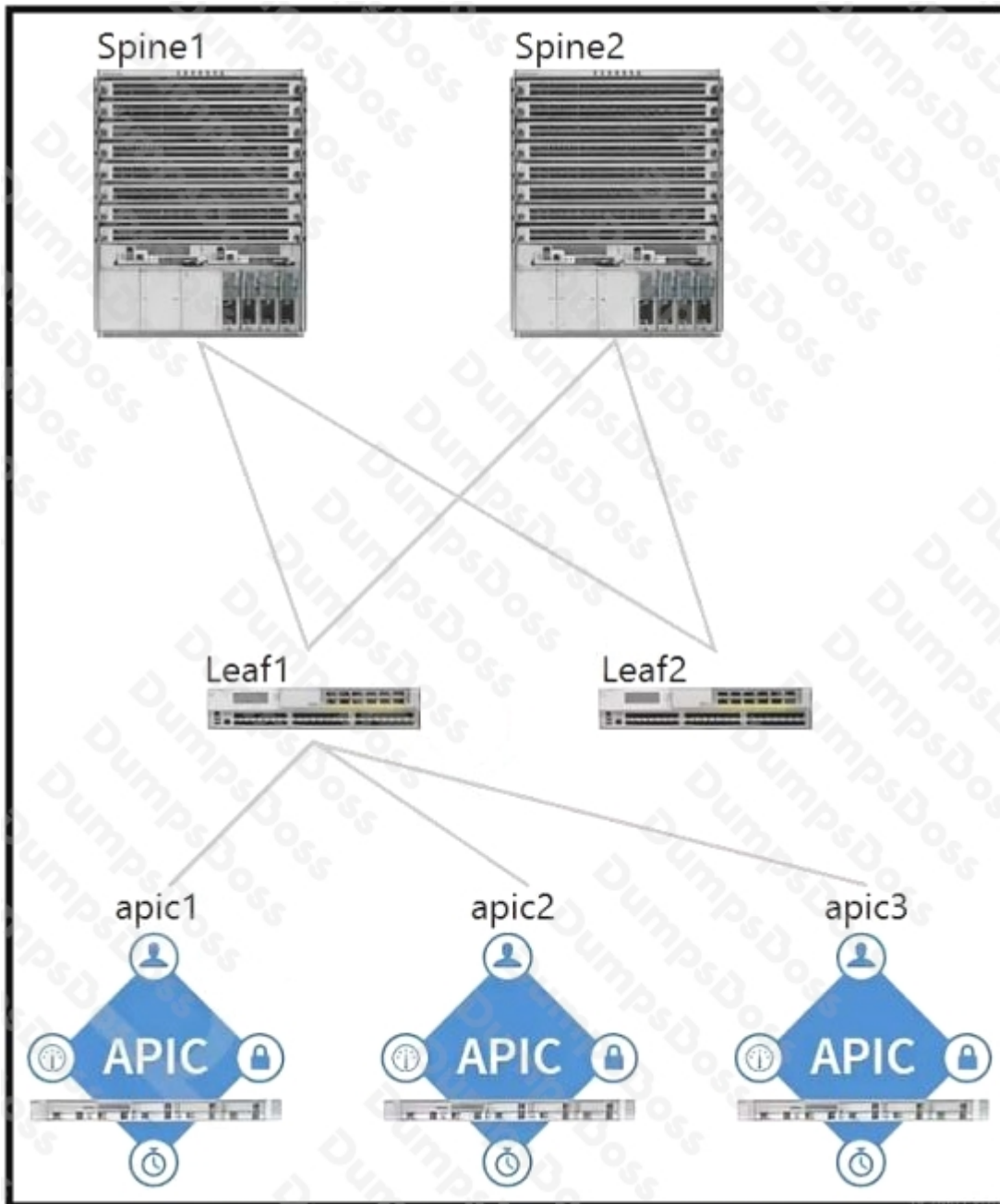


Refer to the exhibit. Server A is connected to the Cisco ACI fabric using two teamed interfaces. One interface in a team is configured as active and the other remains in standby mode. When a failover occurs and the standby interface becomes active, it uses its built-in MAC address to send traffic. Which bridge domain configuration must be applied to resolve the issue?

- A. Configure Hardware proxy.
- B. Set L2 Unknown Unicast to Flood.
- C. Enable ARP flooding.
- D. Activate Limit IP Learning to Subnet.

ANSWER: A

QUESTION NO: 5



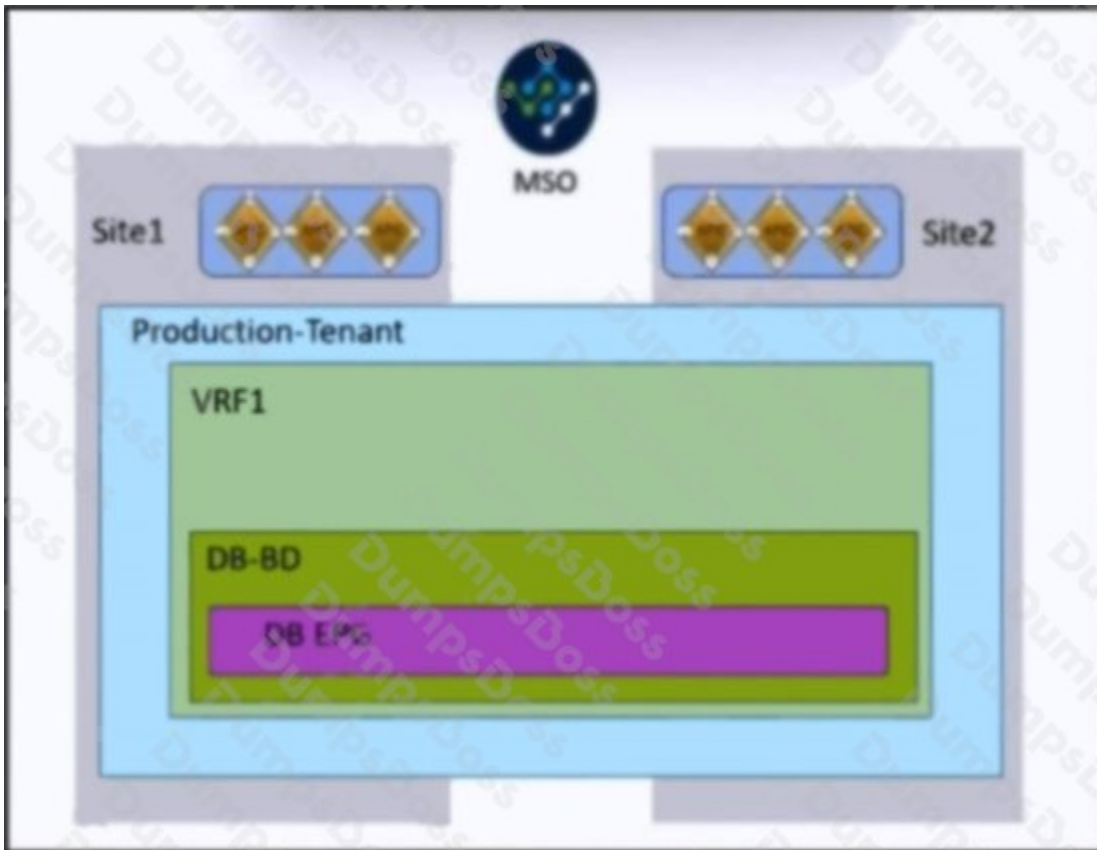
Refer to the exhibit. Which two components should be configured as route reflectors in the ACI fabric? (Choose two.)

- A. Spine1
- B. apic1
- C. Spine2
- D. Leaf1
- E. Leaf2

F. apic2

ANSWER: A C

QUESTION NO: 6



Refer to the exhibit. An engineer must allow IP mobility between Site1 and Site2 in a Cisco ACI Multi-Site orchestrator. The design must meet these requirements:

A disaster recovery (DR) solution must exist between the sites that do not require vMotion support.

The application must be started at a DR site without having to re-IP the application servers.

The solution must avoid any broadcast storms between the sites.

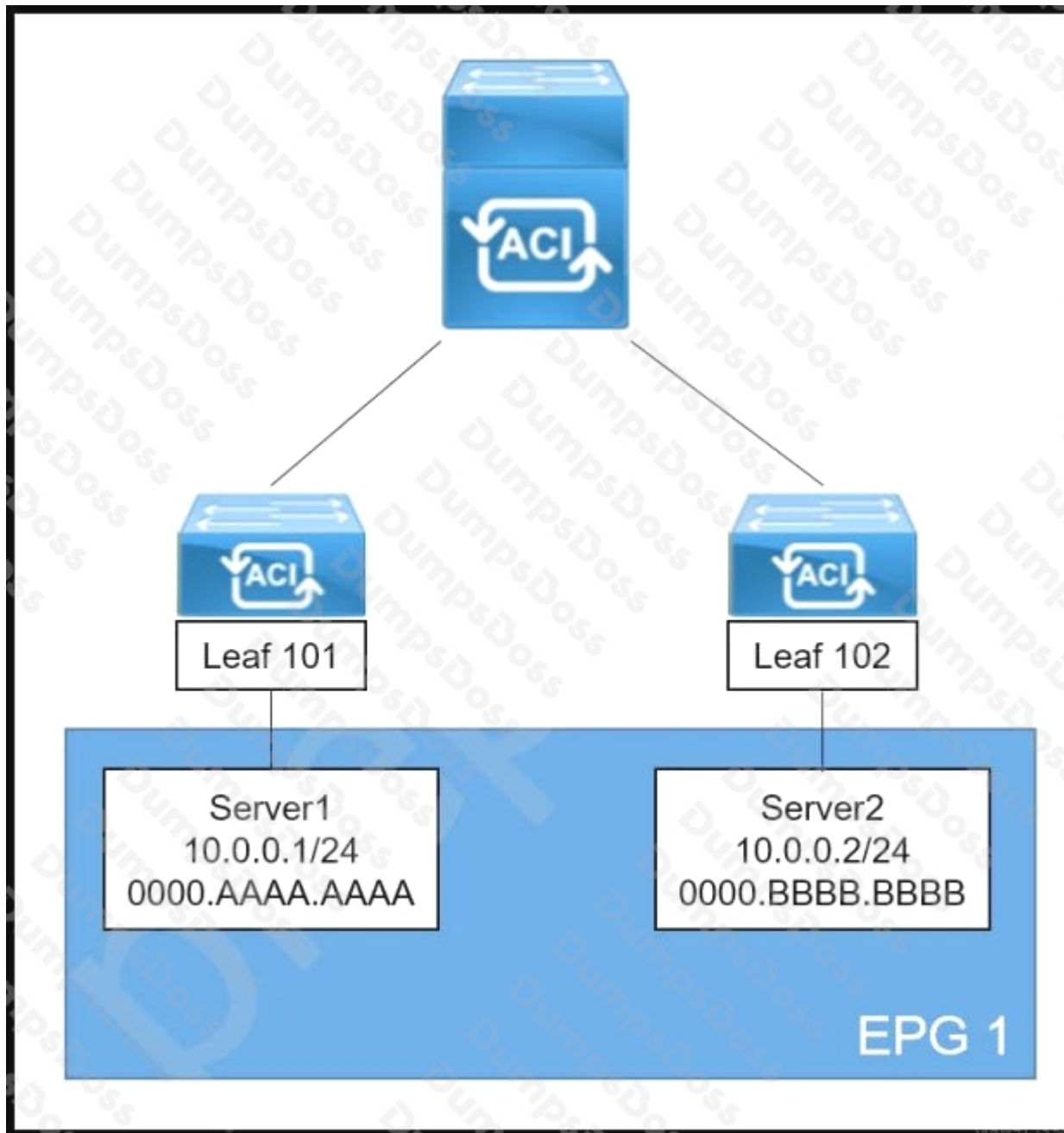
Which two actions meet these criteria? (Choose two.)

- A. Define a unique bridge domain subnet per site.
- B. Configure STP between Cisco ACI fabrics.
- C. Deploy a local EPG for Site1 and Site2.
- D. Disable Inter-site BUM Traffic.

E. Apply the L2 Stretch feature.

ANSWER: A C

QUESTION NO: 7



Refer to the exhibit. A systems engineer is implementing the Cisco ACI fabric. However, the Server2 information is missing from the Leaf 101 endpoint table and the COOP database of the spine. The requirement is for the bridge domain configuration to enforce the ACI fabric to forward the unicast packets generated by Server1 destined to Server2. Which action must be taken to meet these requirements?

- A. Enable ARP Flooding
- B. Set L2 Unknown Unicast to Flood
- C. Set IP Data-Plane Learning to No
- D. Enable Unicast Routing

ANSWER: B

QUESTION NO: 8

Which two protocols support accessing backup files on a remote location from the APIC? (Choose two.)

- A. TFTP
- B. FTP
- C. SFTP
- D. SMB
- E. HTTPS

ANSWER: B C

Explanation:

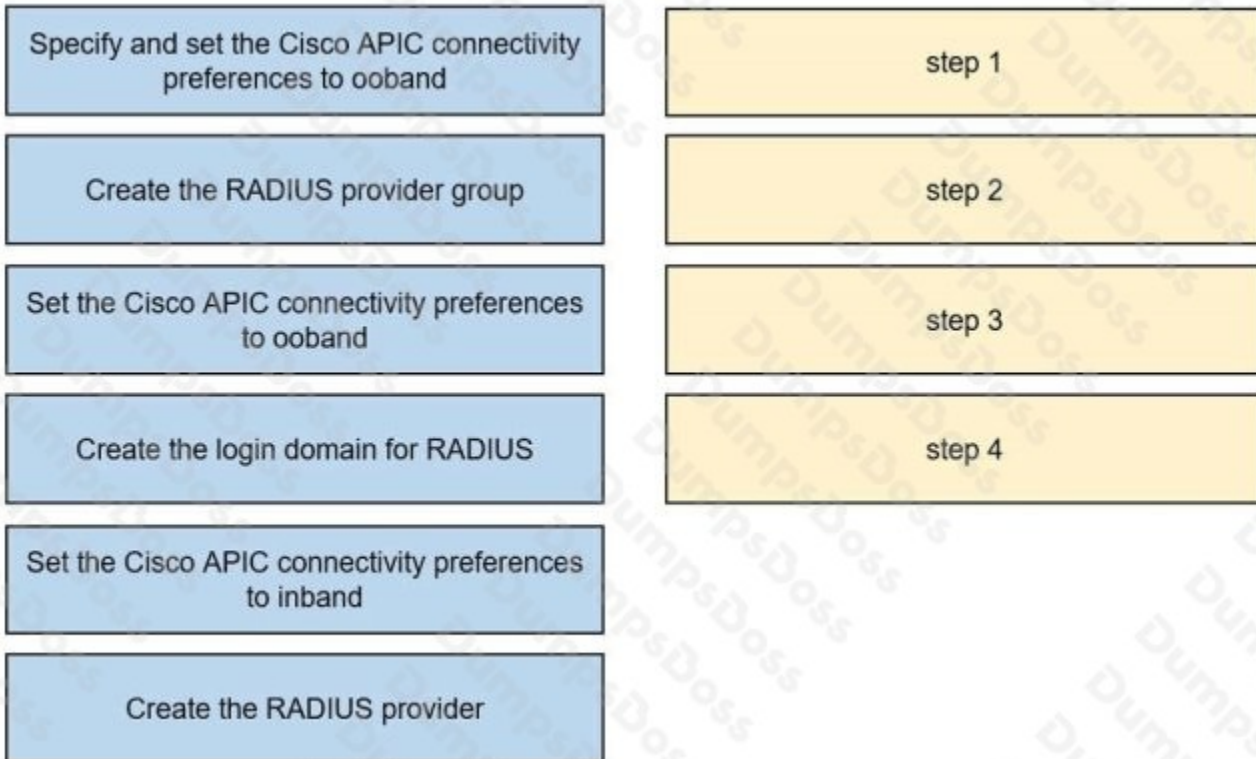
Reference: https://www.cisco.com/c/en/us/td/docs/switches/datacenter/aci/apic/sw/1-x/troubleshooting/b_APIC_Troubleshooting/b_APIC_Troubleshooting_appendix_010011.html

QUESTION NO: 9 - (DRAG DROP)

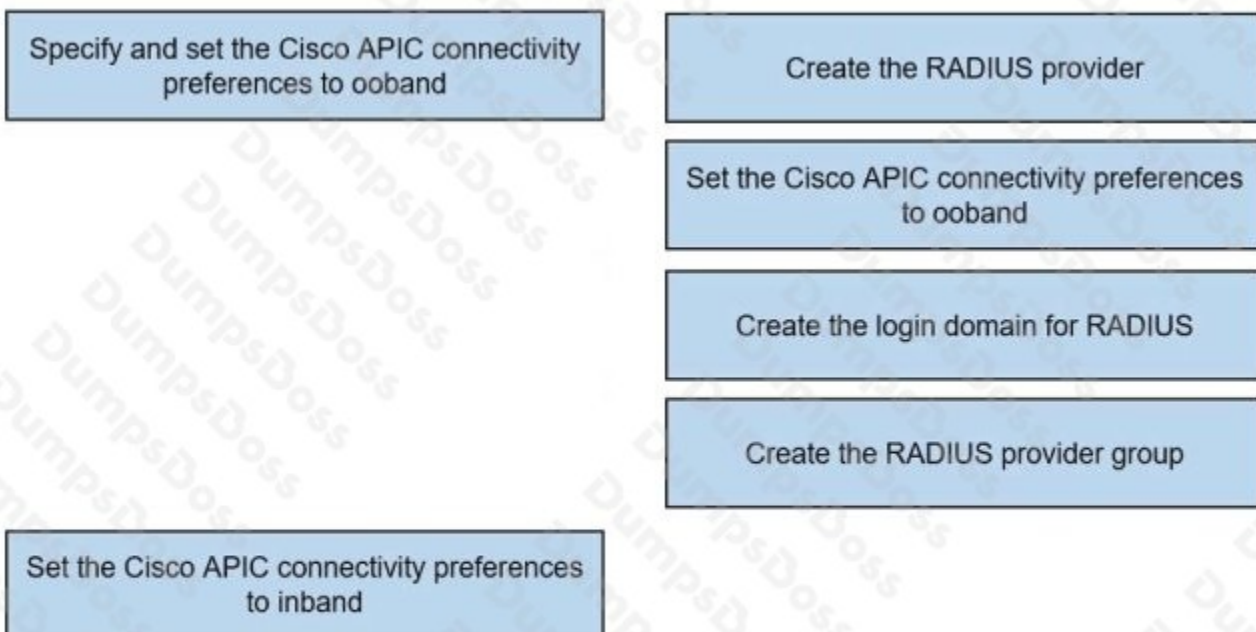
DRAG DROP

An engineer must configure RADIUS authentication with Cisco ACI for remote authentication with out-of-band management access. Drag and drop the RADIUS configuration steps from the left into the required implementation order on the right. Not all steps are used.

Select and Place:

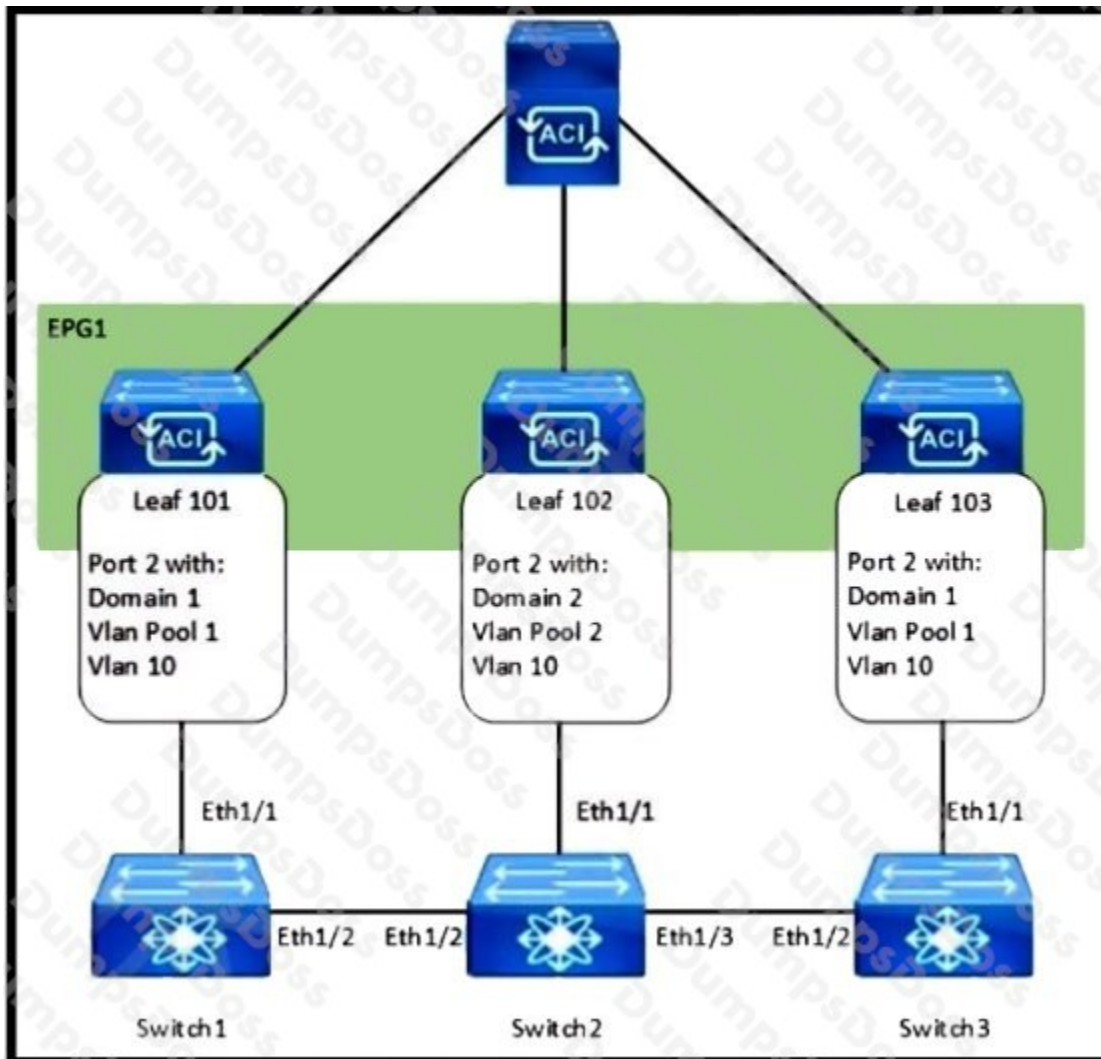


ANSWER:



Explanation:

QUESTION NO: 10



Refer to the exhibit. How are the STP BPDUs forwarded over Cisco ACI fabric?

- A. Cisco ACI acts as the STP root for all three external switches.
- B. STP BPDUs that are generated by Switch2 are received by Switch1 and Switch3
- C. STP BPDUs that are generated by Switch1 are received only by Switch3.
- D. Cisco ACI fabric drops all STP BPDUs that are generated by the external switches.

ANSWER: B

QUESTION NO: 11

Which type of port is used for in-band management within ACI fabric?

- A. spine switch port
- B. APIC console port
- C. leaf access port
- D. management port

ANSWER: C

QUESTION NO: 12

A Cisco ACI is integrated with a VMware vSphere environment. The port groups must be created automatically in vSphere and propagated to hypervisors when created in the ACI environment. Which action accomplishes this goal?

- A. Create the port groups on the vCenter that reflect the EPG names in the APIC
- B. Assign the uplinks of the ESXi hosts to the vDS that the APIC created
- C. Configure contracts for the EPGs that are required on the ESXi hosts
- D. Associate the VMM domain with the EPGs that must be available in vCenter

ANSWER: D

QUESTION NO: 13

What controls communication between EPGs?

- A. Inter-EPG communication is controlled by BGP.
- B. Inter-EPG communication is controlled by contracts.
- C. Inter-EPG communication is controlled by IS-IS.
- D. Inter-EPG communication is controlled by VXLAN.

ANSWER: C

QUESTION NO: 14

On which two interface types should a user configure storm control to protect against broadcast traffic? (Choose two.)

- A. APIC facing interfaces
- B. port channel on a single leaf switch
- C. all interfaces on the leaf switches in the fabric
- D. endpoint-facing trunk interface
- E. fabric uplink interfaces on the leaf switches

ANSWER: B D

Explanation:

Reference: https://www.cisco.com/c/en/us/td/docs/switches/datacenter/aci/apic/sw/2-x/L2_config/b_Cisco_APIC_Layer_2_Configuration_Guide/b_Cisco_APIC_Layer_2_Configuration_Guide_chapter_01010.html

QUESTION NO: 15

An engineer needs to deploy a leaf access port policy group in ACI Fabric to support the following requirements:

- Control the amount of application data flowing into the system
- Allow the newly connected device to auto-negotiate link speed with the leaf switch

Which two ACI policies must be configured to achieve these requirements? (Choose two.)

- A. link level policy
- B. L2 interface policy
- C. slow drain policy
- D. ingress data plane policing policy
- E. ingress control plane policing policy

ANSWER: A D

Explanation:

Reference:

https://www.cisco.com/c/en/us/td/docs/switches/datacenter/aci/apic/sw/kb/b_Cisco_ACI_and_Forward_Error_Correction.html

[https://www.cisco.com/c/en/us/td/docs/switches/datacenter/aci/apic/sw/4-x/security/Cisco-APIC-Security-Configuration-Guide-401/b_Cisco_APIC_Security_Guide_chapter_01110.html#:~:text=Use%20data%20plane%20policing%20\(DPP,dropping%20of%20packets%20occurs%20immediately.](https://www.cisco.com/c/en/us/td/docs/switches/datacenter/aci/apic/sw/4-x/security/Cisco-APIC-Security-Configuration-Guide-401/b_Cisco_APIC_Security_Guide_chapter_01110.html#:~:text=Use%20data%20plane%20policing%20(DPP,dropping%20of%20packets%20occurs%20immediately.)