

# DUMPSBOSS.

## Implementing Cisco Application Centric Infrastructure - Advanced (600-660 DCACIA)

Cisco 600-660

Version Demo

Total Demo Questions: 10

Total Premium Questions: 60

Buy Premium PDF

<https://dumpsboss.co>

[support@dumpsboss.co](mailto:support@dumpsboss.co)

support@dumpsboss.co  
dumpsboss.co

### Topic Break Down

Topic	No. of Questions
Topic 1, ACI Packet Forwarding	9
Topic 2, Advanced ACI Policies and Integrations	21
Topic 3, Multipod	11
Topic 4, Multisite	11
Topic 5, Traditional network with ACI	8
<b>Total</b>	<b>60</b>

## QUESTION NO: 1

Which action should be taken in Cisco ACI to reassign a unique globally scoped pcTag to an EPG that provides a global contract?

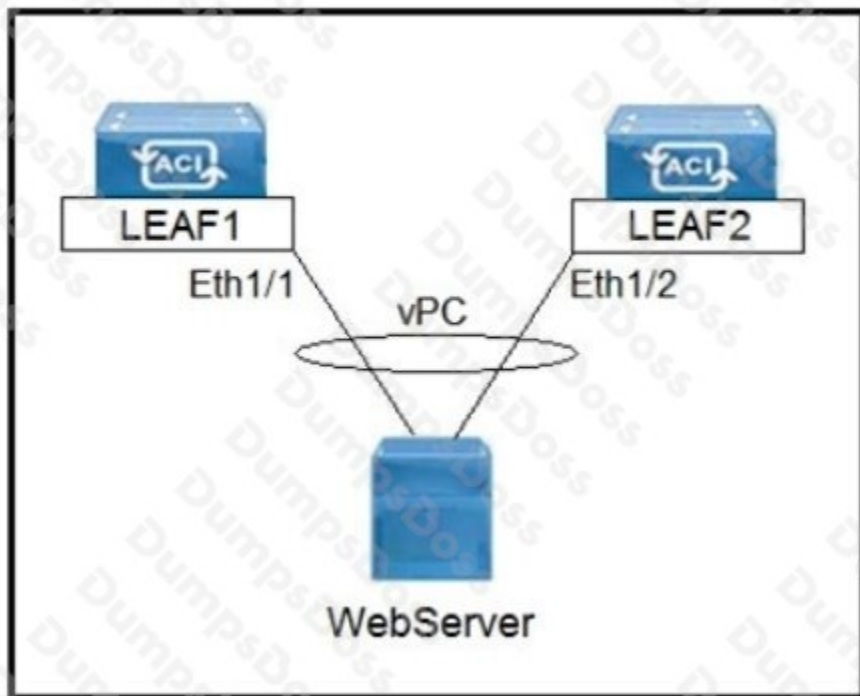
- A. Configure subnets that are treated as virtual IP
- B. Configure subnets that advertise externally
- C. Configure subnets that are shared between VRFs
- D. Configure subnets that are private to VRF

**ANSWER: C**

**Explanation:**

Reference: <https://www.cisco.com/c/en/us/support/docs/cloud-systems-management/application-policy-infrastructure-controller-apic/119023-technote-apic-00.html>

## QUESTION NO: 2

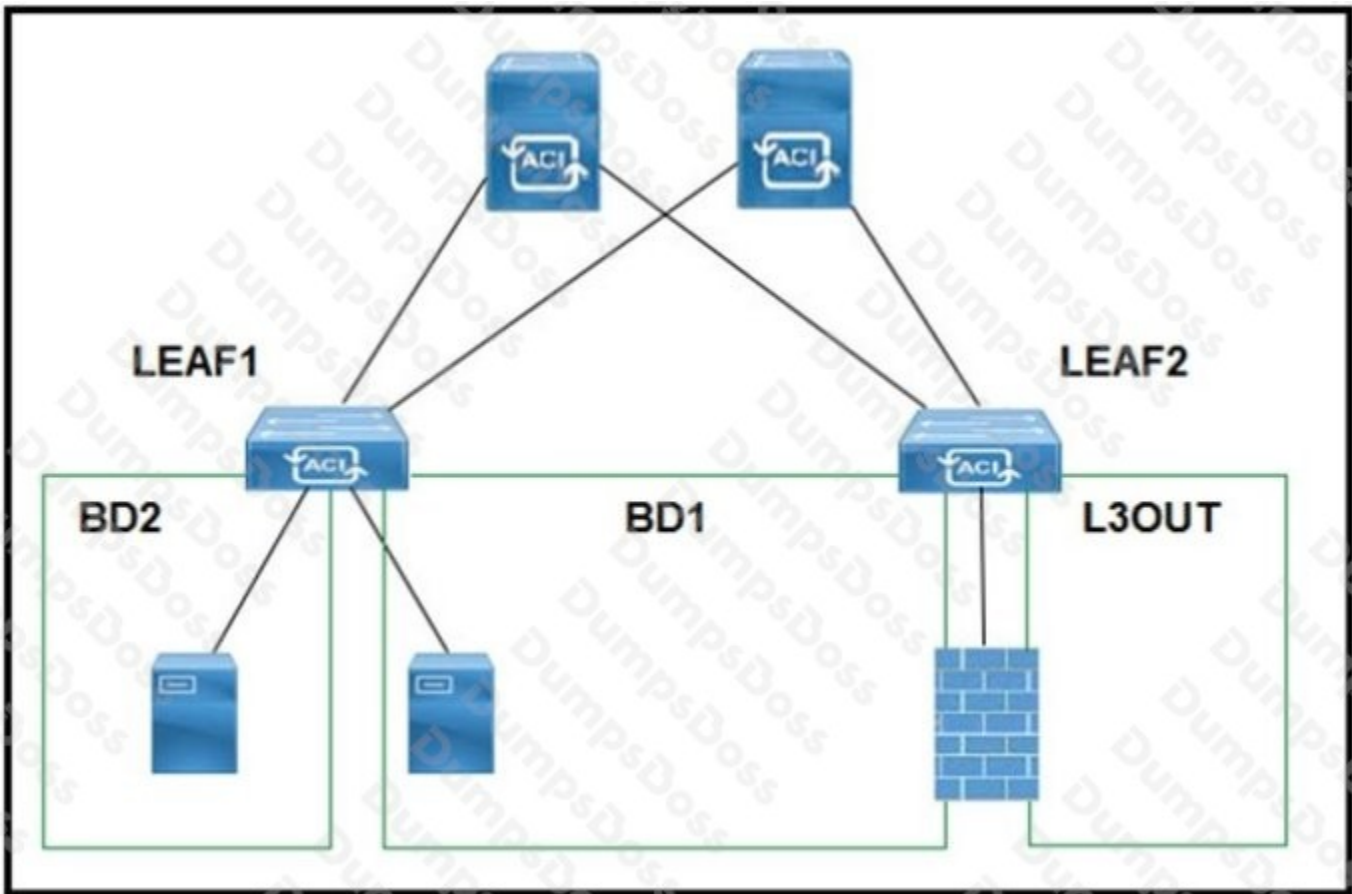


Refer to the exhibit. Which three actions should be taken to implement the vPC in the Cisco ACI fabric? (Choose three.)

- A. Select a common vPC interface policy group
- B. Select individual interface profiles
- C. Select common interface profiles
- D. Select individual switch profiles
- E. Select common switch profiles

**ANSWER: A B E**

## QUESTION NO: 3



Refer to the exhibit. A customer experiences resource overconsumption on one of its border leaf switches. Which action should be taken to reduce the consumption on this switch?

- A. Disable VRF Policy Control Enforcement
- B. Disable IP Data Plane Learning
- C. Migrate L3Outs to another switch

D. Disable Remote EP Learning

ANSWER: B

## QUESTION NO: 4 - (DRAG DROP)

DRAG DROP

A leaf receives unicast traffic that is destined to an unknown source, and spine proxy is enabled in the corresponding bridge domain. Drag and drop the Cisco ACI forwarding operations from the left into the order the operation occurs on the right.

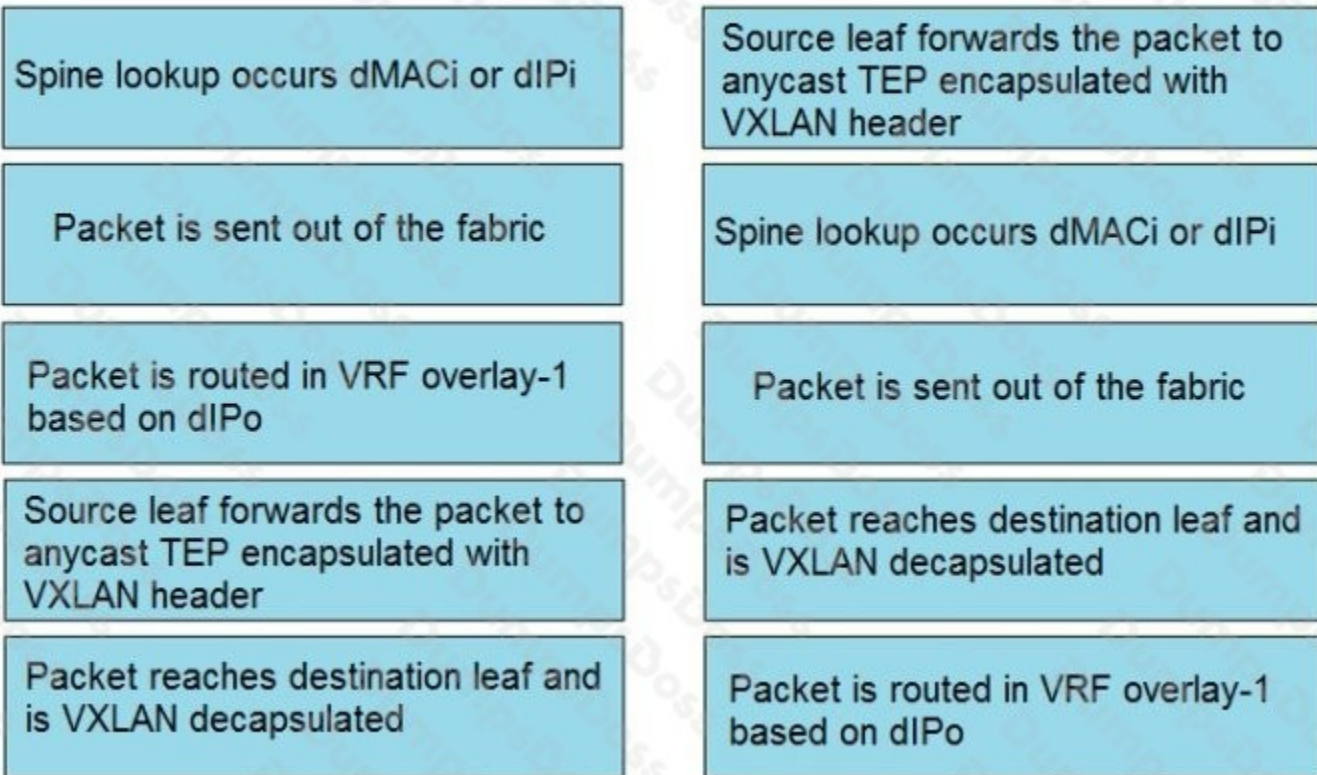
Select and Place:

### Answer Area

Spine lookup occurs dMACi or dIPi	Step 1
Packet is sent out of the fabric	Step 2
Packet is routed in VRF overlay-1 based on dIPo	Step 3
Source leaf forwards the packet to anycast TEP encapsulated with VXLAN header	Step 4
Packet reaches destination leaf and is VXLAN decapsulated	Step 5

ANSWER:

## Answer Area



## Explanation:

### QUESTION NO: 5

An engineer configures a new Cisco ACI Multi-Pod and must set up the link between the spine and the IPN device. Which three actions should be taken to accomplish this goal? (Choose three.)

- A. Enable MP-BGP routing
- B. Enable BIDIR-PIM protocol
- C. Enable PIM-SM protocol
- D. Enable OSPF routing
- E. Enable IS-IS routing
- F. Enable DHCP relay

**ANSWER: A B F**

## QUESTION NO: 6

Which two actions should be taken to ensure a scalable solution when multiple EPGs in a VRF require unrestricted communication? (Choose two.)

- A. Configure a taboo contract between the EPGs that require unrestricted communication between each other.
- B. Enable Preferred Group Member under the EPG Collection for VRF section.
- C. Set the VRF policy control enforcement preference to Unenforced.
- D. Set the EPGs that require unrestricted communication between each other as preferred group members.
- E. Set the EPGs that require policy enforcement between each other as preferred group members.

**ANSWER: C D**

### Explanation:

Reference: [https://www.cisco.com/c/en/us/td/docs/switches/datacenter/aci/apic/sw/4-x/basic-configuration/Cisco-APIC-Basic-Configuration-Guide-42x/Cisco-APIC-Basic-Configuration-Guide42x\\_chapter\\_0110.html](https://www.cisco.com/c/en/us/td/docs/switches/datacenter/aci/apic/sw/4-x/basic-configuration/Cisco-APIC-Basic-Configuration-Guide-42x/Cisco-APIC-Basic-Configuration-Guide42x_chapter_0110.html)

## QUESTION NO: 7

In a Cisco ACI Multi-Site fabric, the Inter-Site BUM Traffic Allow option is enabled in a specific stretched bridge domain. What is used to forward BUM traffic to all endpoints in the same broadcast domain?

- A. ingress replication on the spines in the source site
- B. egress replication on the source leaf switches
- C. egress replication on the destination leaf switches
- D. ingress replication on the spines in the destination site

**ANSWER: D**

### Explanation:

Reference: <http://yves-louis.com/DCI/?p=1277>

## QUESTION NO: 8

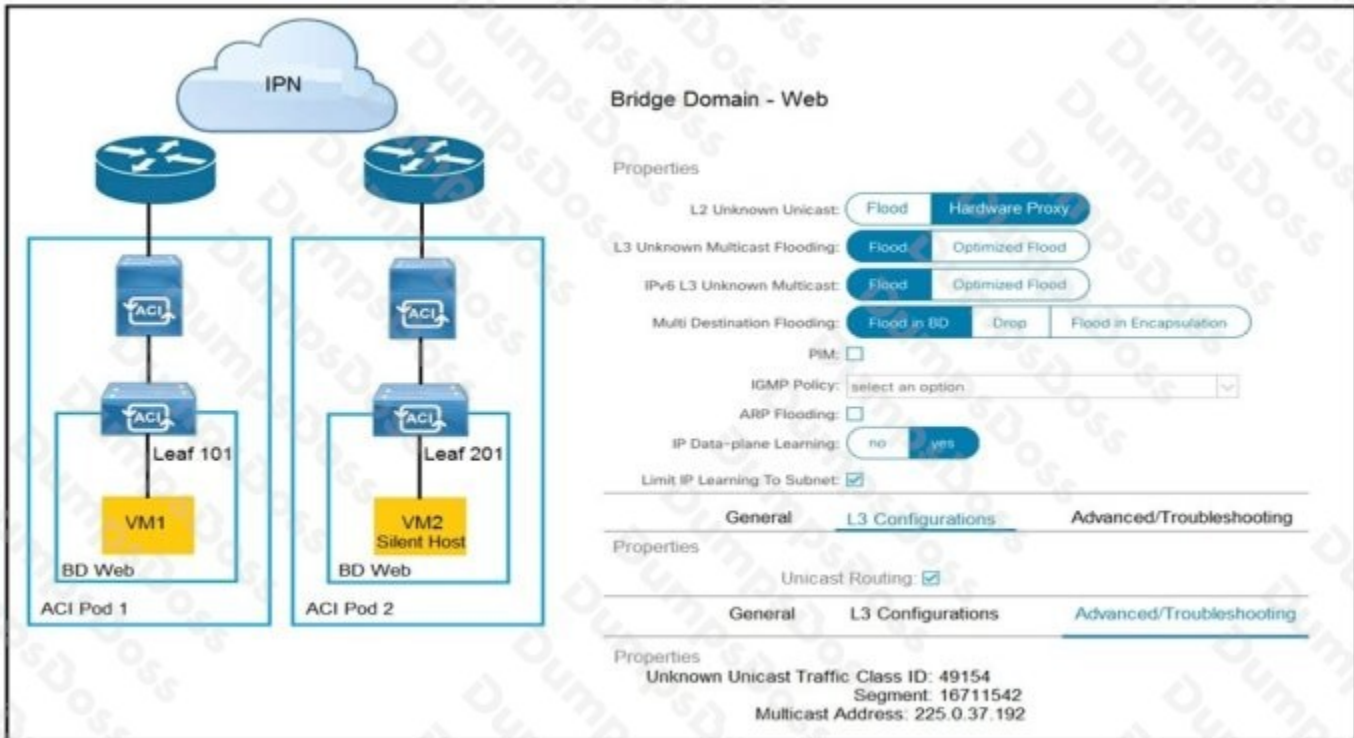
What are two characteristics of Cisco ACI interaction with MSTP? (Choose two.)

- A. A Cisco ACI leaf flushes all local endpoints in the received EPG when an MSTP TCN frame is received.
- B. A static path binding is required for native VLAN to carry the MST BPDUs in existing EPGs.
- C. Mis-cabling protocol is used to snoop the MSTP TCN packets.

- D. A dedicated EPG must be created for the native VLAN ID with static bindings toward the MSTP-enabled switches.
- E. The PVST simulation must be configured on external network switches to support MSTP.

**ANSWER: C D**

## QUESTION NO: 9



Refer to the exhibit. How is the ARP request from VM1 forwarded when VM2 is not learned in the Cisco ACI fabric?

- A. Leaf 101 forwards the ARP request to one of the proxy VTEP spines.
- B. POD1 spine responds to the ARP request after the POD1 COOP is updated with the VM2 location.
- C. Leaf 101 encapsulates the ARP request into a multicast packet that is destined to 225.0.37.192.
- D. Leaf 101 switch consumes the ARP reply of VM2 to update the local endpoint table.

**ANSWER: A**

## QUESTION NO: 10

Which feature should be disabled on a bridge domain when a default gateway for endpoints is on an external device instead of a Cisco ACI bridge domain SVI?

- A. unicast routing
- B. ARP flooding
- C. unknown unicast flooding
- D. proxy ARP

**ANSWER: C**