

DUMPSBOSS.

Using HPE SimpliVity

HP HPE2-K45

Version Demo

Total Demo Questions: 5

Total Premium Questions: 40

Buy Premium PDF

<https://dumpsboss.co>

support@dumpsboss.co

support@dumpsboss.co
dumpsboss.co

QUESTION NO: 1

During the troubleshooting process, HPE Support requested a Support Capture file from multiple HPE SimpliVity hosts. The customer is concerned about security and wants to know what is included in this file.

What information is included in this file? (Select two.)

- A. License entitlement
- B. System status information
- C. HPE InfoSight connection parameters
- D. Security token to access system remotely
- E. Log files

ANSWER: A E

QUESTION NO: 2

A customer wants to deploy HPE SimpliVity for a VDI Implementation. They need to add two NVIDIA GPU accelerators per hypervisor, and they have limited space in the data center. Which HPE SimpliVity model meets the customer needs?

- A. HPE SimpliVity 2600
- B. HPE SimpliVity 325 Gen10
- C. HPE SimpliVity 380 Gen 10 LFF H
- D. HPE SimpliVity 380 Ge10G

ANSWER: B

QUESTION NO: 3

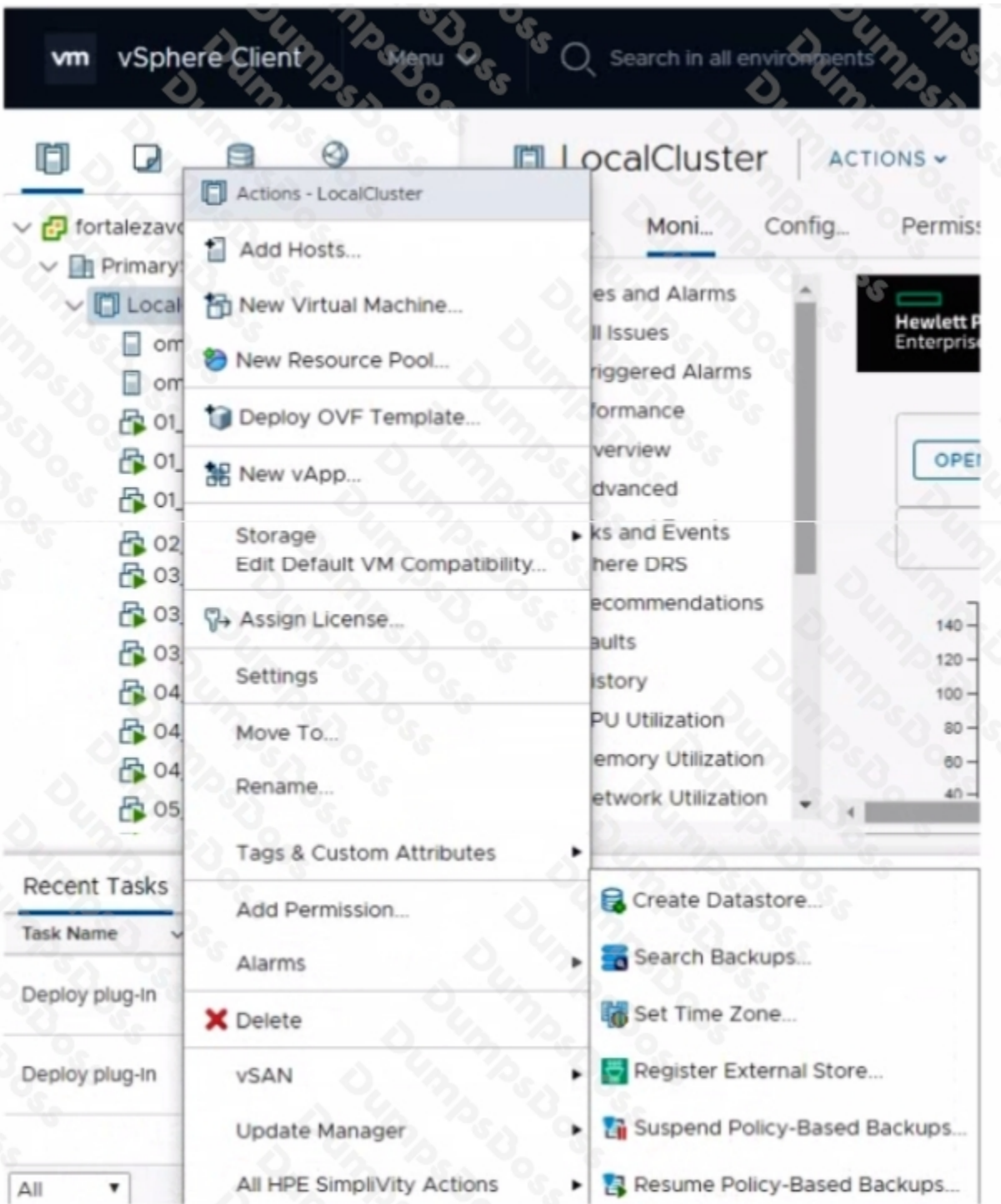
Which functionality does HPE InfoSight for HPE SimpliVity provide?

- A. balance workloads across HPE SimpliVity nodes based on utilization
- B. recommendation for guest operating system settings optimization
- C. automated firmware and software upgrades for registered customers
- D. monitoring of virtual machine latency

ANSWER: A

QUESTION NO: 4 - (HOTSPOT)

Click the option that will allow you to integrate HPE SimpliVity with HPE Storence.



ANSWER:

QUESTION NO: 5

A customer is interested in HPE SimpliVity nodes that support NVIDIA Tesla T4 GPUs. Which models meet the customer needs? (Select two.)

- A. HPE SimpliVity 325 Gen10
- B. HPE SimpliVity 380 Gen10
- C. HPE SimpliVity 2600
- D. HPE SimpliVity 380 Gen10 G
- E. HPE SimpliVity 380 Gen10 SFFH

ANSWER: A B