

DUMPSBOSS.

Delta - HPE Storage Solutions

HP HPE0-J69

Version Demo

Total Demo Questions: 10

Total Premium Questions: 104

Buy Premium PDF

<https://dumpsboss.co>

support@dumpsboss.co

support@dumpsboss.co
dumpsboss.co

QUESTION NO: 1 - (HOTSPOT)

You need to create an N:M relationship between VMware hypervisors and virtual volumes with the least amount of administrative overhead.

Click the option where you can create a group of VMware hypervisors for volumes provisioning.

The screenshot shows the Primera & 3PAR SSMC management console. The 'VMWARE' tab is selected, and the 'Virtual Machines' option is highlighted. The interface includes a navigation menu on the left, a main content area with various configuration options, and a detailed view of a storage system at the bottom.

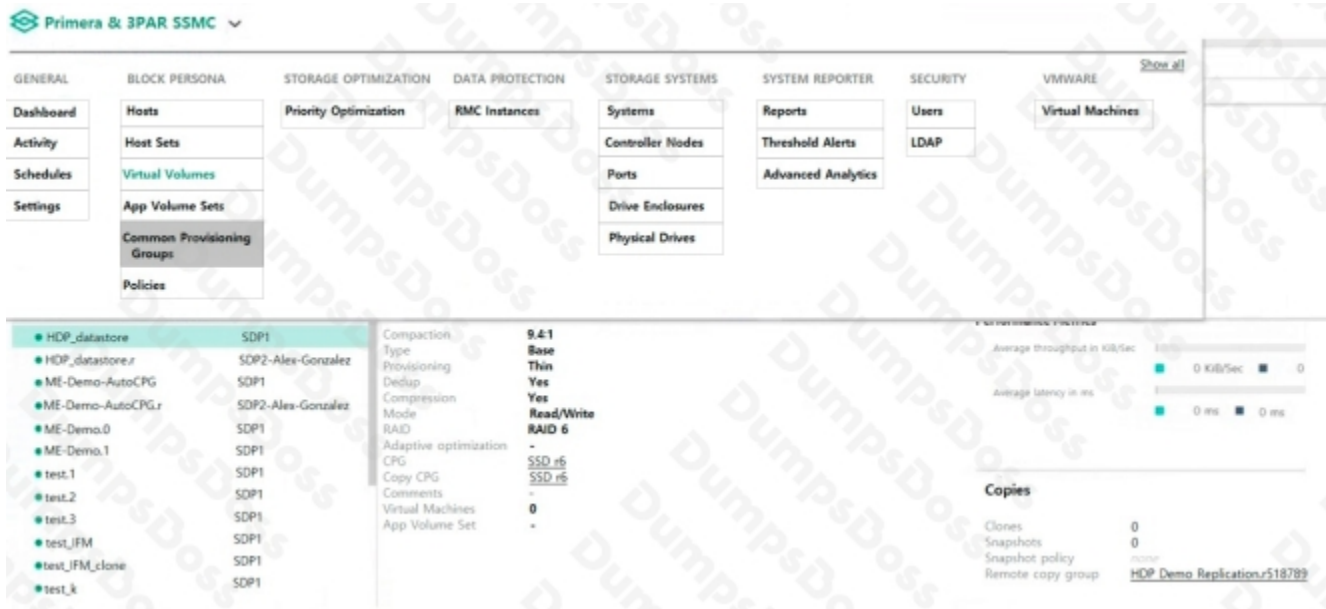
| System Name | SDP | Compaction Type | Provisioning | Dedup | Compression | Mode | RAID | Adaptive optimization | CPG | Copy CPG | Comments | Virtual Machines | App Volume Set |
|---------------|------|-----------------|--------------|-------|-------------|------|------------|-----------------------|-----|----------|----------|------------------|----------------|
| HDP_datastore | SDP1 | 9.4.1 | Base | Thin | Yes | Yes | Read/Write | RAID 6 | - | SSD r6 | SSD r6 | - | - |

ANSWER:

The screenshot shows the Primera & 3PAR SSMC management console. The 'BLOCK PERSONA' tab is selected, and the 'Common Provisioning Groups' option is highlighted. The interface includes a navigation menu on the left, a main content area with various configuration options, and a detailed view of a storage system at the bottom.

| System Name | SDP | Compaction Type | Provisioning | Dedup | Compression | Mode | RAID | Adaptive optimization | CPG | Copy CPG | Comments | Virtual Machines | App Volume Set |
|---------------|------|-----------------|--------------|-------|-------------|------|------------|-----------------------|-----|----------|----------|------------------|----------------|
| HDP_datastore | SDP1 | 9.4.1 | Base | Thin | Yes | Yes | Read/Write | RAID 6 | - | SSD r6 | SSD r6 | - | - |

Explanation:



QUESTION NO: 2

You have proposed a Primera array to a customer for new primary storage. The customer currently has an older 3PAR array that they will continue to use moving forward. The customer would like high

availability configured.

Which RMC Peer Copy pre-requisites do you need to point out to the customer? (Choose two.)

- A. No license is required
- B. 2-port 10 Gb Ethernet Adapter (NIC) is required
- C. 4-port 1 Gb Ethernet Adapter (NIC) is required in each array
- D. RMC 6.2 is required
- E. Target drive type must match source drive type

ANSWER: C D

QUESTION NO: 3

You are designing a new storage environment for a customer. They need good performance, but need to keep costs to a minimum.

They have a very limited staff, and staff is concerned about learning new technologies. You plan to recommend a Nimble HF20 solution.

Which storage connectivity components should you recommend?

- A. FlexFabric switches, Nimble iSCSI card. FC adapters for servers

- B. FC switches, Nimble FC card, FC adapters for servers
- C. Ethernet switches, Nimble iSCSI card, dedicated NICs for servers
- D. Ethernet switches, Nimble FC card, dedicated FC for servers

ANSWER: C

QUESTION NO: 4

What is the benefit of HPE Synergy? (Choose two.)

- A. It supports up to three HPE StoreVirtual VSA nodes for storage RAID.
- B. It can compose and reclaim DAS storage.
- C. It supports HPE BladeSystem c-class FlexFabric interconnect modules.
- D. It can use HPE 3PAR File Persona for object storage.
- E. It can prevent block storage services from HPE 3PAR as part of the resource pool.

ANSWER: B E

QUESTION NO: 5

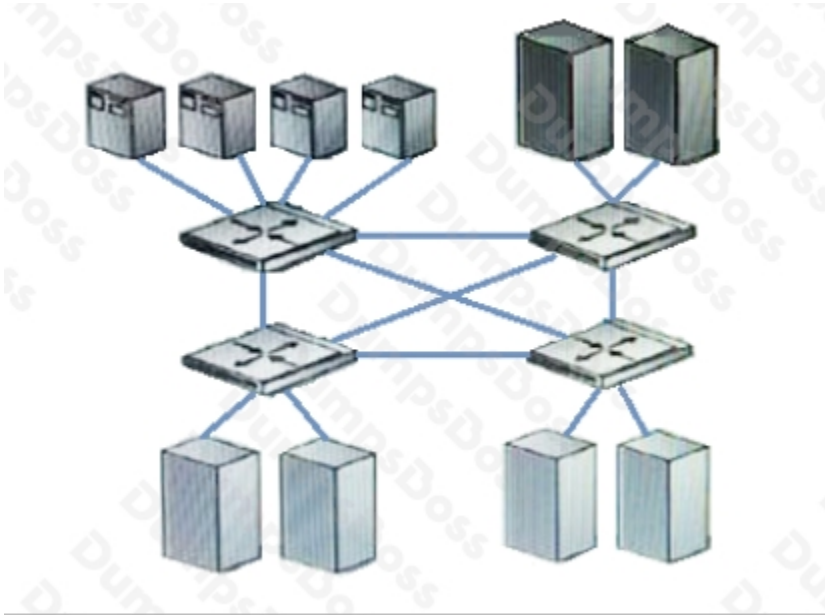
Which statement is correct when comparing functionalities of the AF,CF, and SF series in the nimble storage portfolio?

- A. Zero copy clone are unique feature of all flash array within the nimble portfolio
- B. SF series supports storage snapshots and replication using veeeam backup & replication CS and AF series support storage snapshot only.
- C. Inline deduplication for complete array capacity in combination with compression is offered by the AF and SF series only (67) need to check
- D. 99.9999% availability measured and guaranteed for AF and CF series arrays, SF series array offer 99.999% availability.

ANSWER: C

QUESTION NO: 6

Exhibit:



Which fabric design is shown?

- A. meshed
- B. single fabric
- C. cascaded
- D. core-edge

ANSWER: A

QUESTION NO: 7

A customer is concerned about media and transmission errors caused by any component in the I/O stack from the server host bus adapter (HBA) into the HPE 3PAR StoreServ ports.

Which feature will address the customer's concern?

- A. Persistent Checksum
- B. Persistent Cache
- C. Peer Persistence
- D. Persistent Ports

ANSWER: A

QUESTION NO: 8

Which software feature should an HPE 3PAR Storeserv 8000 customer use to optimize data protection and recovery, including rapid online recovery for his VMware environment?(select two)

- A. HPE 3PAR Virtual Copy software
- B. HPE 3PAR Remote copy software
- C. HPE 3PAR Security software suite
- D. HPE 3PAR File persona Software suite
- E. HPE StoreOnce recovery manager central for VMware

ANSWER: A E

QUESTION NO: 9 - (DRAG DROP)

Match the data access type in a SAN fabric to the correct description.

| Data Access Type | Description |
|------------------|--|
| Centralized | Data access between a local server and a storage system connected to the same switch |
| Distributed | Data access between multiple, dispersed servers and one storage system |
| Local | Data access between multiple, dispersed servers and multiple storage systems |

ANSWER:

| Data Access Type | Description |
|------------------|---|
| Centralized | Local Data access between a local server and a storage system connected to the same switch |
| Distributed | Centralized Data access between multiple, dispersed servers and one storage system |
| Local | Distributed Data access between multiple, dispersed servers and multiple storage systems |

Explanation:

| | Description |
|-------------|--|
| Local | Data access between a local server and a storage system connected to the same switch |
| Centralized | Data access between multiple, dispersed servers and one storage system |
| Distributed | Data access between multiple, dispersed servers and multiple storage systems |

QUESTION NO: 10

A customer is deploying a new StoreOnce VSA solution.

How can the necessary storage capacity be added to the VSA? (Choose two.)

- A. Verify sufficient capacity LTUs are available
- B. Add a new virtual hard disk to the virtual machine
- C. The Cloud bank container needs to be configured once the VSA boots
- D. The Cloud bank container needs to be configured from the vCenter client

ANSWER: B D