

DUMPSBOSS.

CCIE SP Cable Qualification Exam

Cisco 350-021

Version Demo

Total Demo Questions: 15

Total Premium Questions: 399

Buy Premium PDF

<https://dumpsboss.co>

support@dumpsboss.co

support@dumpsboss.co
dumpsboss.co

QUESTION NO: 1

A large number displayed in the Ins column in a flap list for a given modem is not an indication of:

- A. A modem that has needed to reestablish its link too frequently within the configured flaplist insertion-time
- B. A modem that has been turned off or disconnected from the system
- C. Cable modem that is having a registration problem
- D. A modem that failed to respond to consecutive "keep alive" polls

ANSWER: B

QUESTION NO: 2

What is the best IOS command for determining the channel bandwidth on an upstream port for slot 3?

- A. show interface c 3/0 upstream
- B. show interface c 3/0 upstream modem 0
- C. show controller c 3/0 upstream
- D. show cable hop
- E. show cable all

ANSWER: C

QUESTION NO: 3

A DOCSIS 2-way data system is being designed to limit upstream traffic. Unknown modems should be kept from using precious Upstream bandwidth. Given these requirements, it should be ensured that the DOCSIS configuration file has what set?

- A. Vendor-specific information field
- B. Max-cpe should be set to 1
- C. CMTS authentication field should be set
- D. Network Access should be set to 0

E. Downstream frequency should be set above 450 MHz

ANSWER: D

QUESTION NO: 4

According to the MGCP call flow shown, from what line can it be deduced that call agent is requesting that this residential gateway collect digits?

```
21:50:26: MGCP Packet received <---  
RQNT 1825 aaln/S1/SU0/1@c26001.atl0.cbeyond.net MGCP 0.1  
N: mgcp.aSCT1CA.atl0.cbeyond.net:2427  
X: 50  
R: L/hu(N),D/[0-9#*T](D)  
S: L/dl
```

- A. N
- B. X
- C. R
- D. S
- E. RQNT

ANSWER: C

QUESTION NO: 5

An operator is experiencing excessive customer service calls from a serving area supported by a specific uBR-MC16C module. The CMTS is configured for 64 QAM downstream and 16 QAM with a 3.2 MHz upstream channel bandwidth. Having identified the cause of the problem, which three measures could be taken to temporarily resolve it and to ensure acceptable service quality until a permanent problem resolution can be implemented by the MSO? (multiple answer)

- A. Configure the upstream for reduced channel bandwidth.
- B. Replace the CMTS module
- C. Configure the upstream for QPSK modulation
- D. Increase the RF output of the upconverter

E. Configure the affected CMTS receive port for +3dBmV.

ANSWER: A C E

QUESTION NO: 6

In the exhibit, the cable modem 00e0.6f01.e7d2 is "flapping," and it is likely due to:

cmtdid	MAC Address	Upstream	Tag	Hit	Miss	CRC	P-3dF	Flap	Time
	00e0.6f01.ff9e	Cable3/0/00	271	61940	364	0	125962	26240	Feb 28
	10:31:39								
	00e0.6f01.fae7	Cable3/0/00	14	45300	233	0	2054	2074	Feb 27
	23:36:53								
	00e0.6f00.6de7	Cable3/0/00	0	7766	30882	0	0	2059	Feb 28
	10:32:05								
	00e0.6f00.6ef6	Cable3/0/00	5	784	4	0	1686	691	Feb 28
	10:30:23								
	00e0.6f01.f3b9	Cable3/0/00	4	46231	230	0	301	305	Feb 28
	00:45:14								
	00e0.6f00.956f	Cable3/0/00	5	400	1	0	1359	305	Feb 28
	10:28:44								
	00e0.6f00.f5ea	Cable3/0/00	9	368	1	0	1322	331	Feb 27
	14:20:36								
	00e0.6f01.f080	Cable3/0/00	0	45590	159	0	148	150	Feb 27
	23:36:51								
	00e0.6f02.04b1	Cable3/0/00	1	2575	125	0	*138	145	Feb 27
	17:05:50								
	00e0.6f02.0366	Cable3/0/00	1	16782	501	0	104	133	Feb 28
	10:22:36								
	00e0.6f01.e7d2	Cable3/0/00	8	11183	1538	0	6	112	Feb 28
	04:45:15								
	00e0.6f00.91e7	Cable3/0/00	2	18601	464	0	76	105	Feb 27
	17:20:00								
	00e0.6f01.ffa0	Cable3/0/00	0	44883	153	0	70	71	Feb 27
	09:01:12								

- A. Excessive "Hits" caused by return path performance problems
- B. Excessive number of RF power adjustments
- C. Low Hit to Miss ratio
- D. High Hit to Miss ratio

ANSWER: C

QUESTION NO: 7

Incrementing hits with a corresponding excessive number of incrementing misses displayed in a flap list for a given modem can be an indication of: (multiple answer)

- A. Noisy return path performance
- B. A modem that has been turned off or disconnected from the system
- C. A modem that failed to respond to consecutive "keep alive" polls

D. A modem that has needed to reestablish its link more than once within the configured flap-list insertion-time

ANSWER: A C

QUESTION NO: 8

The address field contains: (multiple answer)

The following figure shows the format of the standard Frame Relay frame:

Field length, in bytes.

8	16	Variable	16	8
Flags	Address	DATA	FCS	Flags

- A. The DLCI Value
- B. The Extended Address (EA)
- C. Congestion Control
- D. FCS

ANSWER: A B C

QUESTION NO: 9

A new Cisco router has no configuration defined. Which methods can be used to configure the router for the first time? (multiple answer)

- A. Using SNMP via a network management station
- B. Connecting a terminal to the console port and running the Setup dialogue
- C. Connecting a terminal to the console port and directly typing in configuration commands
- D. Using BOOTP/SLARP/RARP to download a configuration file that has been created ahead of time
- E. Connecting a terminal to the console port, defining a minimal configuration, connecting the router to the network, and using TFTP to download a configuration file that has been created ahead of time

ANSWER: B C D E

QUESTION NO: 10

Cisco recommends the use of a headend-grade coaxial cable or a quad-shield coaxial cable with a minimum of 60% + 40% braid and double foil insulation to connect the cable modem cards to the HFC network. The center conductor must be straight and extend 1/8 inch (3.2 mm) beyond the end of the connector, and the connector should be securely crimped to the cable. Select three recommended cable types that can be used to connect the Cisco uBR7200 series universal broadband routers: (multiple answer)

- A. RG 58
- B. RG 59
- C. RG 59/U
- D. RG 6
- E. RG 7

ANSWER: B C D

QUESTION NO: 11

The "Rec Power" field in the report produced by the "show cable modem" command includes an asterisk (*) with the power level for a particular cable modem. This is an indication of:

- A. The power level received from the CMTS by the cable modem and an indication that the level has changed.
- B. The RF power level received at the CMTS line card upstream port and an indication that the cable modem has reached its maximum transmit power level.
- C. The RF power level received at the CMTS line card upstream port is an indication of power adjustment fluctuations.
- D. The power level received from the CMTS by the cable modem and an indication that the cable modem has reached its maximum transmit power level.

ANSWER: C

QUESTION NO: 12

A network administrator is using debug commands to check the performance of a network.

What steps can the administrator take to ensure that the "debug" will not require too much CPU, or at least that she will not have to reboot the router to disable debug? (multiple answer)

- A. Make the debug command as specific as possible
- B. Use the max-time parameter of the debug command

- C. In configuration mode, enter scheduler interval 15
- D. Configure a loopback to channel debug traffic

ANSWER: A C

QUESTION NO: 13

The name of the DOCSIS config file to download will be offered to the cable modem in what DHCP field?

- A. giaddr
- B. config-filename
- C. packet-filename
- D. siaddr

ANSWER: C

QUESTION NO: 14

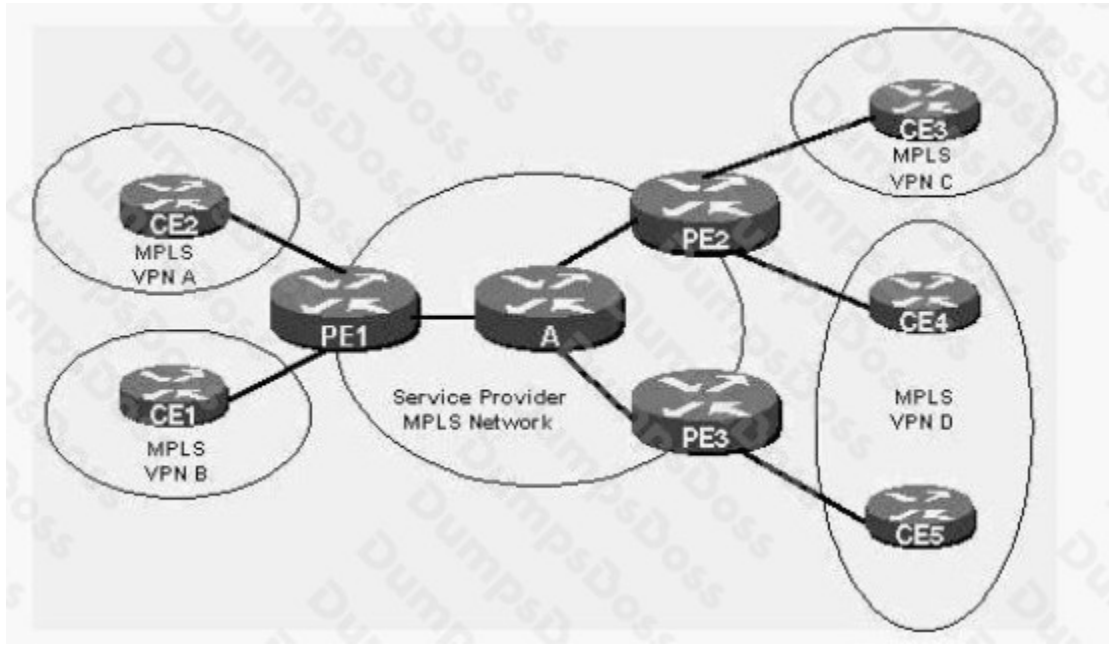
HFC cable television return path networks are aligned to provide: (multiple answer)

- A. Asymmetrical gain since the downstream and upstream bandwidths are also asymmetrical
- B. Unity gain with a fixed input level and varying output levels adjusted by the selection of a fixed value attenuator and equalizer at the output stage in each of the return amplifiers in the network
- C. Unity gain with a fixed output level and varying input levels adjusted by the selection of a fixed value attenuator and equalizer at the input stage of each of the return amplifiers in the network
- D. Cable modems the ability to power range comfortably within their output power dynamic range
- E. It is not necessary to align the return path amplifiers since the CMTS will automatically adjust the cable modem transmit power levels.

ANSWER: B D

QUESTION NO: 15

In the MPLS network shown, how many routing tables are on Router A?



- A. 1
- B. 2
- C. 3
- D. 4
- E. 5

ANSWER: A