

DUMPSBOSS.

Lead System Architect (LSA) Pega Architecture Exam 86V2

Pegasystems PEGAPCLSA86V2

Version Demo

Total Demo Questions: 10

Total Premium Questions: 148

Buy Premium PDF

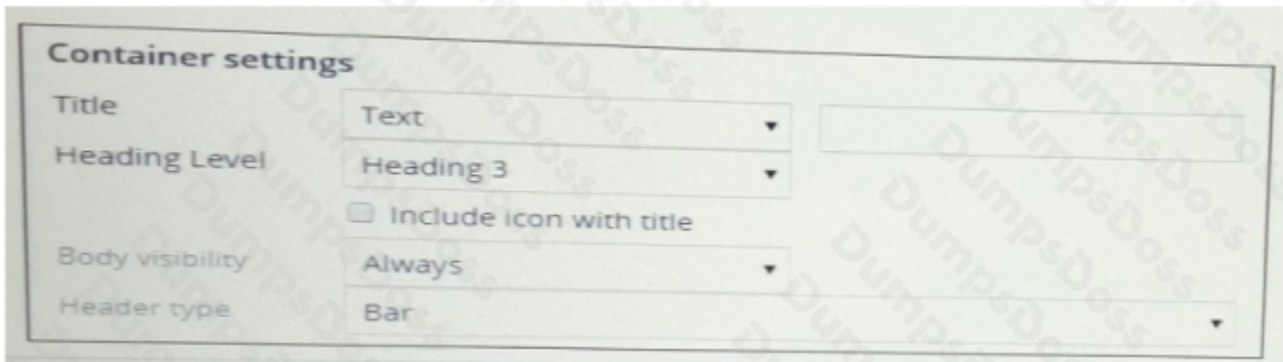
<https://dumpsboss.co>

support@dumpsboss.co

support@dumpsboss.co
dumpsboss.co

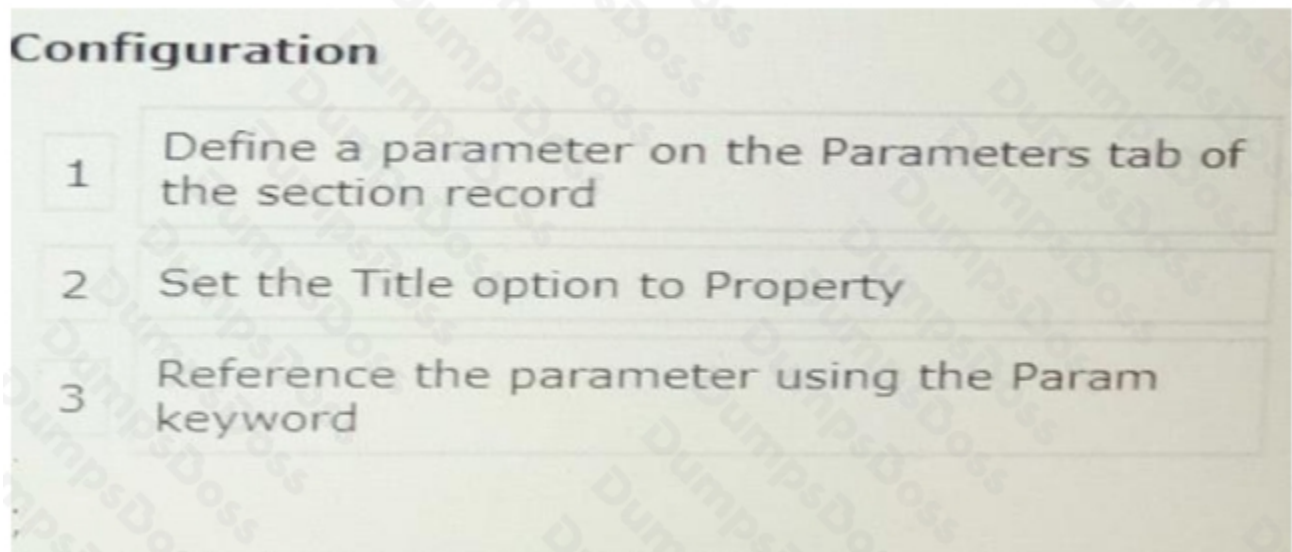
QUESTION NO: 1 - (SIMULATION)

You are configuring the container settings of a display a title. The title is based on the type of loan requested



ANSWER: checktheanswerbelow.

Explanation:



QUESTION NO: 2

Customer information is captured in an application. Corporate policy states that private information be secured and only visible to a limited users.

Which configuration do you recommend?

A. Use a visible when rule for the properties displaying sensitive information.

- B. Create an access control policy restricting access to the sensitive information.
- C. Configure an access deny rule restricting access to the sensitive information.
- D. Move sensitive information to separate sections and apply a privilege to the sections.

ANSWER: B

QUESTION NO: 3

Which three approaches are considered a PegaUnit: testing best practice? (Choose Three)

- A. A test ruleset is placed at the top of an application's ruleset stack.
- B. A test case uses limited assertions.
- C. A test case groups relevant assertions together.
- D. A test case is not necessary when an error message is the expected result.
- E. A test case focuses on a single area of functionality.

ANSWER: B D E

QUESTION NO: 4

Users in a cloud-based production application report a chronic performance issue that occurs every day between 2:0 P.M. and 4:00 P.M. All attempts to reproduce the problem in the Development, QA, and Staging environments have failed.

Which two techniques help you troubleshoot the problem? (Choose Two)

- A. Review Performance Alerts and Exceptions in PDC
- B. Review a Production Tracer Log using SMA-
- C. Review Alerts and Exceptions using PLA.
- D. Review Performance Alerts and Exceptions in AES.

ANSWER: A C

QUESTION NO: 5

A Pega application locally stores the same set of codes defined by and used within an external system of record. The Pega application does not locally store the labels associated to these codes. During case processing, the displayed labels for this set of codes are sourced from the external system of record. On any given day, the label associated to a code may change. You are asked to implement a report definition that displays the current label associated to each code whenever the report is run.

How do you design a Pega application to meet this requirement?

- A. Develop a SQL function that calls a stored procedure to retrieve the currently associated level for each code.
- B. Persist the most recently retrieved labels for each code in a local table. Join to that table when running the report.
- C. Query the distinct codes that the report would display. Develop an interface to retrieve the associated labels in bulk.
- D. Display report definition rows using a custom section. Use a Keyed-access Data Page to source label values.

ANSWER: A

QUESTION NO: 6

Users in a cloud-based production application report a chronic performance issue that occurs every day between 2:00 P.M. and 4:00 P.M. AH attempts to reproduce the problem in the Development, QA, and Staging environments have failed.

Which two techniques help you troubleshoot the problem? (Choose Two)

- A. Review Performance Alerts and Exceptions in PDC.
- B. Review a Production Tracer Log using SMA.
- C. Review Alerts and Exceptions using PLA.
- D. Review Performance Alerts and Exceptions in AES.

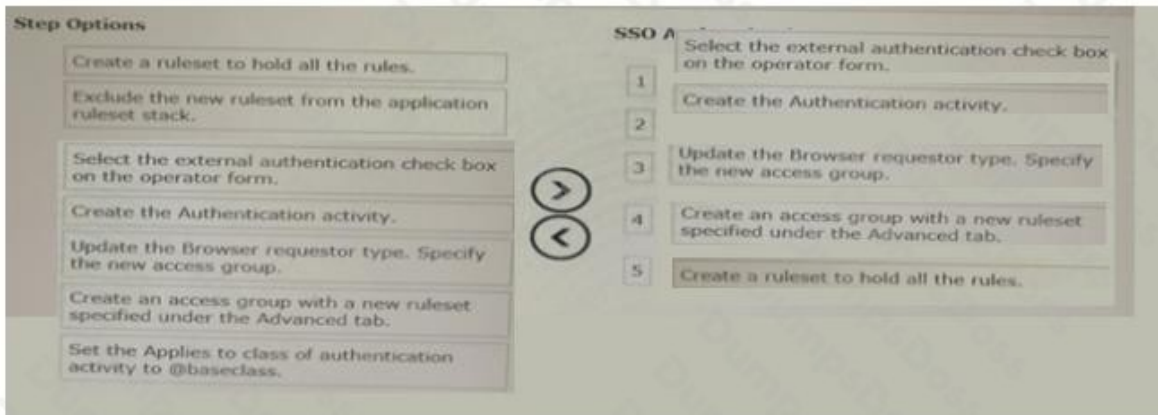
ANSWER: A C

QUESTION NO: 7 - (DRAG DROP)

Select and move the five steps required to implement single sign-on (SSO) authentication in a pega application to the SSO authentication implementation steps column. (choose five)

The screenshot displays a Pega application interface for configuring SSO authentication. It is divided into two main sections: 'Step Options' on the left and 'SSO Authentication Implementation Steps' on the right. The 'Step Options' section contains seven text boxes with instructions: 'Create a ruleset to hold all the rules.', 'Exclude the new ruleset from the application ruleset stack.', 'Select the external authentication check box on the operator form.', 'Create the Authentication activity.', 'Update the Browser requestor type. Specify the new access group.', 'Create an access group with a new ruleset specified under the Advanced tab.', and 'Set the Applies to class of authentication activity to @baseclass.'. The 'SSO Authentication Implementation Steps' section is a large empty box with a vertical list of five numbered slots (1-5) on its left side. Between the two sections are two circular arrows, one pointing right and one pointing left, indicating the drag-and-drop functionality.

ANSWER:



QUESTION NO: 8

When implementing a Next-Best-Action, the customer Lifetime value Threshold is used to _____ for an offer

- A. determine customer eligibility
- B. apply the customer's lifetime value
- C. prioritize high value propositions
- D. prioritize customer

ANSWER: A

QUESTION NO: 9

How do you configure an application to monitor changes made to delegated Decision Table in a production environment?

- A. check Enable Auditing on the Rule-Declare-Decision Table RuleForm harness
- B. use Designer studio> system> Refactor-rules>compare rule
- C. check Audit the use of this flow action on the Rule check in flow action
- D. Define an Advanced agent that scans History-Rule instances on a daily basis

ANSWER: C

QUESTION NO: 10 - (DRAG DROP)

The following figure depicts a hierarchy of applications that are built on other applications.

Specifically , the productionapp application is built on applications customerapp and

employeeapp. Each of these applications has additional built-on applications, including the duplicated MYEnterpriseApp application, which has two different versions in use. All applications are built on the same version of PegaRUUS.

ProductionApp 01.01	
CustomerApp 07.01	EmployeeApp 01.01
ServiceApp 01.01	MyEnterpriseApp 01.01
MyEnterpriseApp 01.02	PegaRULES 07.01
PegaRULES 07.01	

Stack List Options

MyEnterpriseApp 01.01

ProductionApp 01.01

CustomerApp 07.01

EmployeeApp 01.01

ServiceApp 01.01

MyEnterpriseApp 01.02

PegaRULES 07.10

Pega Linear Application Stack List Order

1

2

3

4

5

6

>

<

ANSWER:

ProductionApp 01.01
CustomerApp 07.01
ServiceApp 01.01
EmployeeApp 01.01
MyEnterpriseApp 01.02
PegaRULES 07.10