

DUMPSBOSS.

Nokia Border Gateway Protocol Fundamentals for Services

Nokia 4A0-114

Version Demo

Total Demo Questions: 10

Total Premium Questions: 44

Buy Premium PDF

<https://dumpsboss.co>

support@dumpsboss.co

support@dumpsboss.co
dumpsboss.co

QUESTION NO: 1

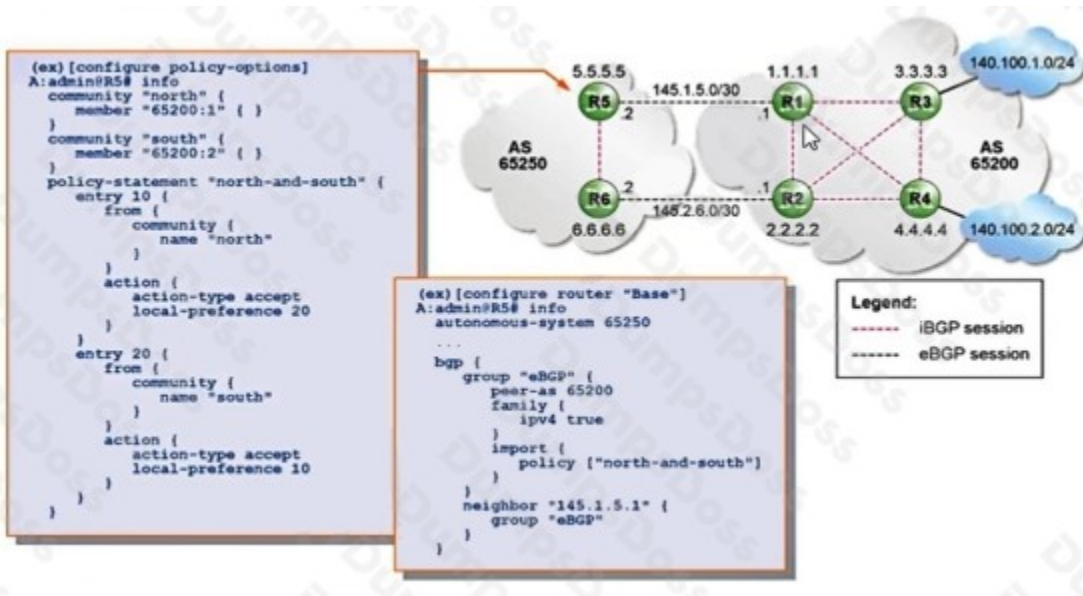
On the Nokia 7750 SR, which of the following is NOT an address family that BGP supports?

- A. IPv4
- B. VPN-IPv4
- C. Label-IPv4
- D. MP-EVPN

ANSWER: C

QUESTION NO: 2

In the diagram, the BGP import policy "north-and-south" is applied to router R5. Router R1 advertises the prefix 140.100.1.0/24 with a community set to "65200:1". Which of the following statements about how router R5 processes the received route update for prefix 140.100.1.0/24 is TRUE?



- A. The prefix is rejected.
- B. The prefix's local preference is set to 20.
- C. The prefix's community value is removed.
- D. The prefix's community value is modified to 65200:2.

ANSWER: D

QUESTION NO: 3

Which of the following statements about route reflector clusters is FALSE?

- A. Multiple clusters may be configured within an AS.
- B. Within an AS, route reflectors belonging to different clusters do not need to be fully-meshed among themselves.
- C. A router can be the client of multiple route reflectors within its AS.
- D. When a route reflector reflects a route, it adds its cluster ID to the Cluster_list attribute.

ANSWER: D

QUESTION NO: 4

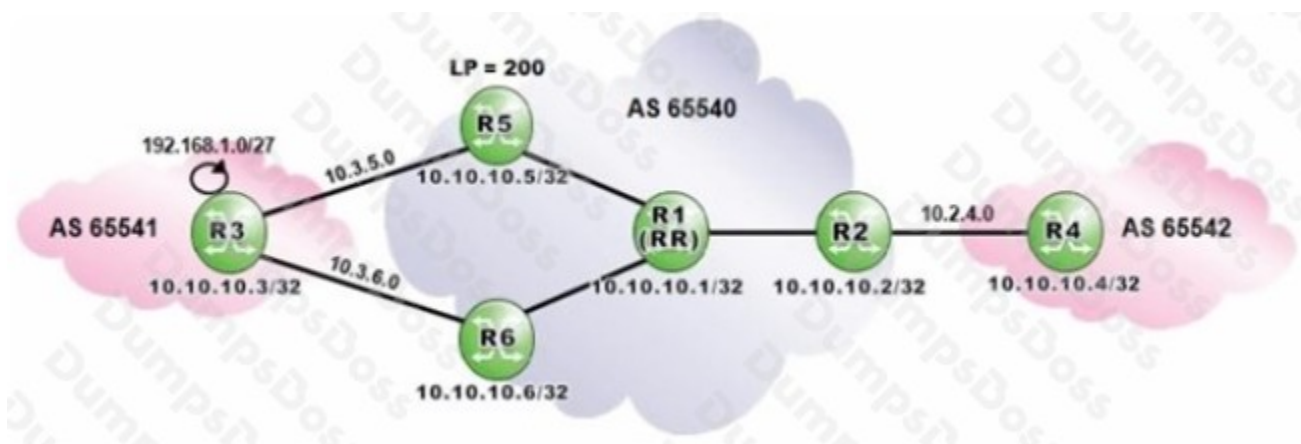
Which of the following attributes can be used to prevent route advertisement loops in a network using router reflectors?

- A. MED
- B. ORIGIN
- C. CLUSTER_LIST
- D. AS_PATH

ANSWER: C

QUESTION NO: 5

Click the exhibit.



Router R1 is a route reflector with clients R2, R5 and R6. Prefixes advertised by router R5 have a local preference of 200. Router R3 advertises the prefix 192.168.1.0/27 to routers R5 and R6.

Assuming that none of the routers in AS 65540 is configured with "advertise-external", what is the expected output of "show router bgp routes" on router R5?

A. Flag Network

Nexthop As-Path	LocalPref	MED
u*>i 192.168.1.0/27 10.3.5.3 65541	200 None	None -

B. Flag Network

Nexthop As-Path	LocalPref	MED
u*>i 192.168.1.0/27 10.3.5.3 65541	None None	None -
i 192.168.1.0/27 10.10.10.5 65541	200 None	None -
i 192.168.1.0/27 10.10.10.6 65541	100 None	None -

C. Flag Network

Nexthop As-Path	LocalPref	MED
u*>i 192.168.1.0/27 10.3.5.3 65541	None None	None -
i 192.168.1.0/27 10.10.10.5 65541	200 None	None -

D. Flag Network

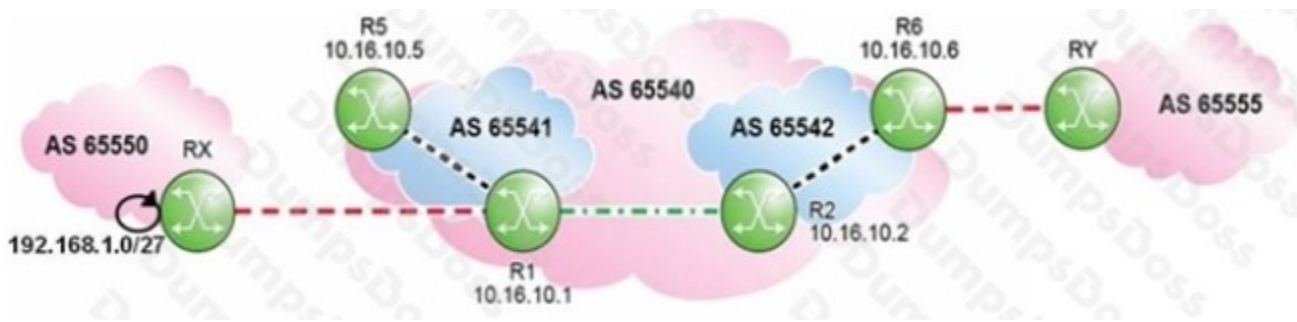
Nexthop As-Path	LocalPref	MED
u*>i 192.168.1.0/27 10.10.10.5 65541	200 None	None -
i 192.168.1.0/27 10.10.0.6 65541	100 None	None -

- A. Option A
- B. Option B
- C. Option C
- D. Option D

ANSWER: C

QUESTION NO: 6

Click the exhibit.



Which of the following is a valid confederation configuration for Router R2?

- A. R2>config>router# info

autonomous-system 65540
confederation 65540 members 65541 65542
- B. R2>config>router# info

autonomous-system 65542
confederation 65540 members 65541
- C. R2>config>router# info

autonomous-system 65542
confederation 65540 members 65541 65542
- D. R2>config>router# info

autonomous-system 65540
confederation 65542 members 65541

- A. Option A
- B. Option B
- C. Option C
- D. Option D

ANSWER: C

QUESTION NO: 7

Which of the following is considered a best practice for BGP address planning?

- A. Advertising external networks into IGP.
- B. Using system addresses for setting up iBGP sessions.
- C. Exporting the networks associated with the external links of eBGP peers into BGP.
- D. Optimizing BGP route table by exporting IGP routes into BGP.

ANSWER: B

QUESTION NO: 8

Which of the following statements about router reflectors is FALSE?

- A. A full iBGP mesh is required among route reflectors.
- B. A route reflector can have both iBGP and eBGP clients.
- C. A router reflector disables the iBGP split-horizon rule for its clients.
- D. Route reflectors are used to reduce the number of iBGP sessions required in an AS.

ANSWER: A

QUESTION NO: 9

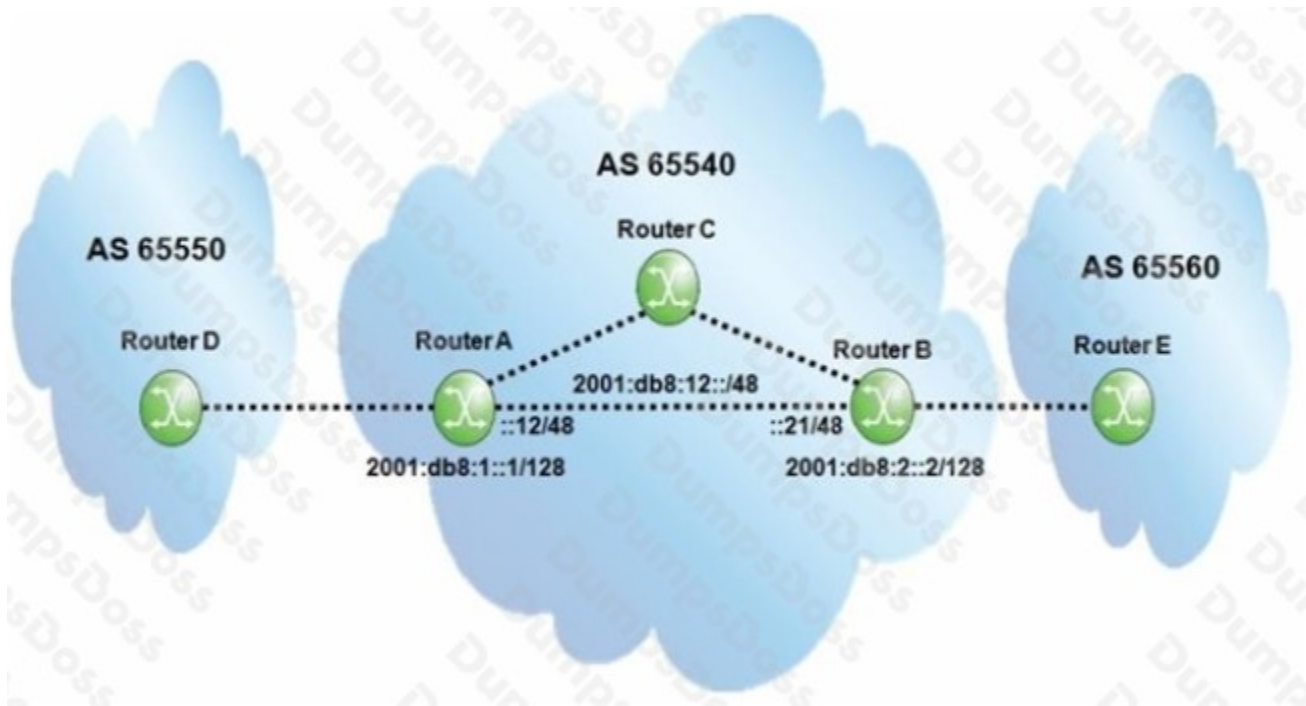
A traditional (non EVPN) VPRN service is configured using MP-BGP and LDP transport tunnels. Which of the following statements about the VPN service label is TRUE?

- A. The service label is advertised using LDP.
- B. The service label is prepended to the customer IPv4 prefixes.
- C. The service label must be manually configured for the VPRN on each PE router.
- D. The service label is carried in an MP-BGP VPN-IPv4 route update.

ANSWER: D

QUESTION NO: 10

Click the exhibit.



Assume all router-IDs are properly configured, and global IPv6 addresses are used to establish eBGP sessions. Which of the following configurations is required on router A so that router B can exchange traffic with router D?

- A.

```
group "IPv6_iBGP"  
family ipv6  
next-hop-self  
peer-as 65540  
neighbor 2001:DB8:2::2  
exit  
exit
```
- B.

```
group "IPv6_iBGP"  
next-hop-self  
type internal  
peer-as 65540  
neighbor 2001:DB8:2::2  
exit  
exit
```
- C.

```
group "IPv6_iBGP"  
family ipv6  
peer-as 65540  
neighbor 2001:DB8:2::2  
exit  
exit
```
- D.

```
group "IPv6_iBGP"  
family ipv6  
next-hop-self  
type internal  
neighbor 2001:DB8:2::2  
exit  
exit
```

- A. Option A
- B. Option B
- C. Option C
- D. Option D

ANSWER: A