

# DUMPSBOSS.

## BICSI Registered Communications Distribution Designer - RCDDv14.1

BICSI RCDDv14.1

Version Demo

Total Demo Questions: 15

Total Premium Questions: 318

Buy Premium PDF

<https://dumpsboss.co>

[support@dumpsboss.co](mailto:support@dumpsboss.co)

support@dumpsboss.co  
dumpsboss.co

## QUESTION NO: 1

Company A recently signed a contract with a strategic business partner, Company B, to jointly roll out a new technology. Company B is excited about the joint marketing opportunity. Company A's component Quality Assurance team has expressed concerns to you the program manager, that the product is being rolled out prematurely and has identified potential issues with backend support systems. QA, however, assures you that a manual work around is possible, but not ideal. Company B requests an enhancement to the new product. In a meeting with Company B, you determine that additional funding will be required and resources allocated and scheduled.

What is your MOST appropriate next step?

- A. Secure funding from another project that was cancelled
- B. Use an integrated change control process
- C. Use the available management reserve
- D. Advise Company B that funding and resources are not available

**ANSWER: B**

## QUESTION NO: 2

A program stakeholder is concerned about information they receive about a project. Who is responsible for reviewing the communications management plan to assure adequate information is provided to the stakeholder'?

- A. Program sponsor
- B. Communications manager
- C. Project manager
- D. Program manager

**ANSWER: D**

## QUESTION NO: 3

A program delivers incremental benefits but is far from closure. The company completes an acquisition and defines new strategic objectives.

What should the program manager do next?

- A. Evaluate the impact of the new strategic objectives through a change request
- B. Integrate the new acquisition into the program to include the new strategic objectives
- C. Assess the impact of the new acquisition on the contract management plan

D. Review the benefits management plan to assess the continued validity of the program

**ANSWER: D**

## QUESTION NO: 4

Which two of the following apply during a project's close out process? (Choose two.)

- A. Communicate discrepancies to responsible parties.
- B. Begin testing of installed infrastructure.
- C. Evaluate the surroundings of the project and report back to the communications distribution professional of these findings.
- D. Hire legal council for representation.
- E. Create schedule for completion of punch list.

**ANSWER: A E**

## QUESTION NO: 5

An organization requests that a junior project manager, with no previous experience or training in the industry take over a complex program component. The program component involves senior subject matter experts and has dependencies with other large projects to deliver key benefits to the organization.

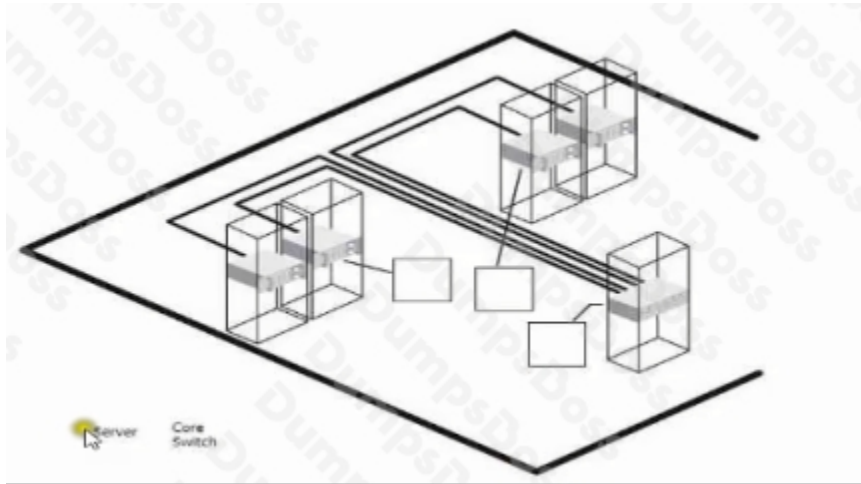
How should the junior project manager respond to this request?

- A. Accept the assignment, identify the skill gaps and request training
- B. Reject the assignment, because of the ethical requirement not to accept work for which the project manager is not qualified
- C. Accept the assignment as a challenge and an opportunity to acquire new skills and seek advice from a senior project manager
- D. Reject the assignment because of fear of failure and resulting negative career impact

**ANSWER: B**

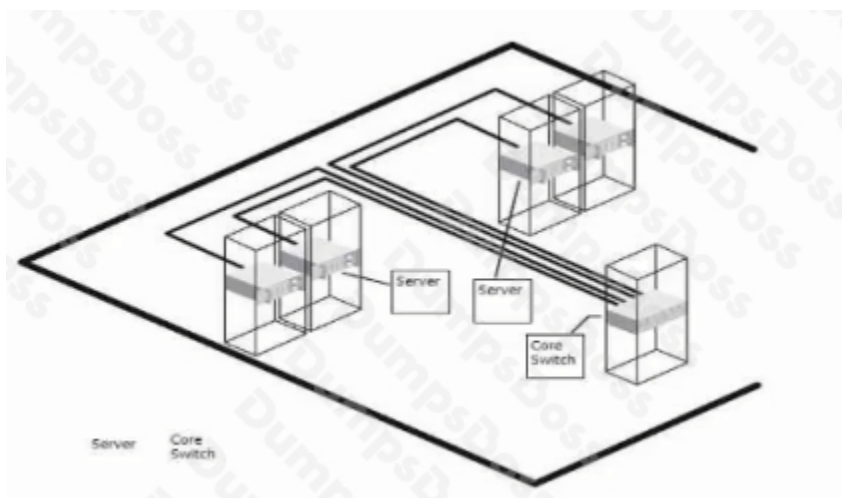
## QUESTION NO: 6 - (DRAG DROP)

Identify the core switch(es) and server(s) of the data center in the diagram below by dragging the appropriate term into each box in the diagram.



**ANSWER:**

**Explanation:**



## QUESTION NO: 7

A project's installation start involves a Kickoff Meeting and the General Contractor's Coordination Meeting. As part of the designer's responsibilities, which two of the following are key elements of the Kick-off Meeting? (Select two options.)

- A. Project submittal approval process
- B. RFI process
- C. Payment procedures
- D. Punch List process
- E. Project start and completion dates

**ANSWER: B E**

## QUESTION NO: 8

Which two of the following are included in the ICT distribution designer's role of vendor and contractor coordination'? (Select two options.)

- A. Conduct final ICT inspections to ensure standard and code compliance, design intent, and/or client requirements are met.
- B. Monitor project schedule for delays
- C. Produce ICT closeout documentation for the owner to provide the record documentation of the installation
- D. Communicate status to stakeholders
- E. Assist in the resolution of unforeseen conditions, change orders. RFIs, and changes to the project's critical path

**ANSWER: D E**

## QUESTION NO: 9

In specifying labels and pruned tags that meet Underwriters Laboratories (UL) 969 Standard, marking and labeling systems are provided following the listed metrics. Which two of the following are REQUIRED for the UL standard? (Select two options.)

- A. Adhesion test
- B. Thickness test
- C. Texture test
- D. Durability test
- E. Visual inspection

**ANSWER: A E**

## QUESTION NO: 10

One interior TTY must be provided at locations defined as public accommodations with \_\_\_\_\_ or more pay telephones.

- A. One
- B. Two
- C. Four
- D. Six
- E. Eight

**ANSWER: C**

## QUESTION NO: 11

When preparing an upfront cost estimate, the ICT distribution designer **MUST** consider which two of the following fees? (Select two options.)

- A. Taxes
- B. Permits
- C. Inspection
- D. Licensing
- E. Safety

**ANSWER: B C**

## QUESTION NO: 12

What's the **MINIMUM** depth of a trench from top of the cable/conduit to final grade? (Select two options.)

- A. 305 mm(12 in)
- B. 610 mm (24 in)
- C. 914 mm (36 in)
- D. 1270 mm (50 in)
- E. Below the area's 50-year frost line

**ANSWER: B E**

## QUESTION NO: 13

An ice cream company wants to introduce a new flavor to a new market. The executive sponsor requests a sampling for the test market and the sample group provides negative feedback. As this type of program had previously been conducted by the company, the program manager questions whether similar results were experienced during testing.

What should the program manager do next?

- A. Document the results to share with the program governance board
- B. Facilitate another test market sampling
- C. Contact the R&D department for product testing results
- D. Review the program management information system (PMIS) for lessons learned

**ANSWER: D**

## QUESTION NO: 14

A program manager has been assigned to a program that has received approval of the program charter and for which a stakeholder register has been prepared. During stakeholder engagement planning the program manager should consider which of the following stakeholder aspects?

- A. Attitude about the program external political position and technical expertise
- B. Level of influence and participation and attitude about the program
- C. Expectation of program benefits, level of influence, and organizational culture
- D. Level of support/opposition technical expertise, and organizational culture

**ANSWER: B**

## QUESTION NO: 15

In a contiguous properly environment (e. g., where campus backbone cables exist), which two of the following are CRITICAL factors to understand for maintenance and growth purposes? (Select two options.)

- A. Fill ratio
- B. Familiarity with the routes and spaces (proper record keeping)
- C. Cable composition
- D. Not able to determine the working capacity versus spare cable capacity
- E. Cost analysis of the value of capex and capex models

**ANSWER: B C**