

# DUMPSBOSS.

## BICSI Registered Communications Distribution Designer – RCDDv14

BICSI RCDDv14

Version Demo

Total Demo Questions: 15

Total Premium Questions: 288

Buy Premium PDF

<https://dumpsboss.co>

[support@dumpsboss.co](mailto:support@dumpsboss.co)

support@dumpsboss.co  
dumpsboss.co

## QUESTION NO: 1

One of the constituent project managers asks a new program manager to obtain approval for an additional key project requirement. A tolerance range is set, if the tolerance range is too narrow on a program what effect will multiple minor changes have on the program?

- A. Reduction in program quality
- B. Degradation of program communications
- C. Reduction in program risk
- D. Slow down in program implementation

**ANSWER: D**

## QUESTION NO: 2

Which two of the following types of metallic conduit REQUIRE threaded couplings? (Select two options.)

- A. Electrical metallic tubing (EMT)
- B. Aluminum metal conduit (AMC)
- C. Flexible metal conduit (FMC)
- D. Intermediate metal conduit (IMC)
- E. Rigid metal conduit (RMC)

**ANSWER: D E**

## QUESTION NO: 3

Which two of the following items MUST be included in a detailed SoW? (Select two options.)

- A. What type of work needs to be performed
- B. A general description of work to be performed
- C. Who must approve the Scope of work
- D. How the contract performance will be evaluated/judged
- E. When the work will start

**ANSWER: A E**

## QUESTION NO: 4

A new program manager joins a multi-year program that has been underway for almost a year. During interviews, several stakeholders state that they do not understand how the program will help the organization

At the next stakeholder meeting, what should the program manager present to address their concerns?

- A. Program charter
- B. Program scope assessment results
- C. Business case and program roadmap
- D. Expected program benefits management plan

**ANSWER: C**

## QUESTION NO: 5

An ICT distribution designer is reviewing design documents with the owner to gain approval for an ER design. Which of the following information about the site shall be included?

- A. Sustainability requirements
- B. Suitability requirements
- C. Access and/or service provider requirements
- D. Designer requirements

**ANSWER: C**

## QUESTION NO: 6

The type of apparatus housed in TRs varies greatly in size, purpose and function. Which two of the following active equipment is included? (Select two options.)

- A. Cross-connect facilities
- B. Telecommunication's equipment
- C. Environmental controls
- D. Lighting controls
- E. Building system equipment

**ANSWER: B E**

## QUESTION NO: 7

A program manager notices that one project manager tends to withdraw during important team discussions to avoid conflict. What technique could the program manager use to gain more input from this project manager?

- A. Institute an incentive program to create competition among the team members.
- B. Make the project manager share an office with a more assertive team member
- C. Solicit ideas from each team member individually, giving each person a chance to express their opinions
- D. Create an online message board so team members can see and respond to everyone's ideas

**ANSWER: C**

## QUESTION NO: 8

A hotel chain initiates a program to expand meeting offerings to include telecommunications technology and virtual meetings. The program has component projects, each of which requires team members to have different technical skills and expertise. The program manager assembles a team of project managers to lead each of the projects, and learns that the desired resources will not be available at the start of the program

As a result, the program manager must do which of the following'?

- A. Utilize team members that are currently available, even though they do not have the expertise needed.
- B. Assign the tasks on the critical path to the resources available to adhere to the project schedule
- C. Delay the start of the program until the assigned resources are available
- D. Apply resource leveling considering the constraints of time, budget, and quality

**ANSWER: B**

## QUESTION NO: 9

When estimating an ICT distribution designer project timeline schedule based on the scope of work which two scheduling methods use network diagrams to integrate logical activities and identify critical paths on the project? (Select two options.)

- A. If This Then That (IFTT)
- B. Gantt Chart
- C. Work Breakdown Structure (WBS)
- D. Critical Path Method (CPM)
- E. Program Evaluation Review Technique (PERT)

**ANSWER: B D**

## QUESTION NO: 10

What is the MINIMUM lighting requirement (or telecommunications spaces)?

- A. 50 lux (4.6 foot-candles) of lighting in the horizontal plane and 20 lux (1.9 foot-candles) of lighting in the vertical plane measured at 1 meter (3.28 feet) above the finished floor
- B. 200 lux (18.6 foot-candles) of lighting in the horizontal plane and 500 lux (46 foot-candles) of lighting in the vertical plane measured at 1 meter (3.28 feet) above the finished floor
- C. 500 lux (46 foot-candles) of lighting in the horizontal plane and 200 lux (18.6 foot-candles) of lighting in the vertical plane measured at 1 meter (3.28 feet) above the finished floor
- D. 500 lux (46 foot-candles) of lighting in the horizontal plane and 500 lux (46 foot-candles) of lighting in the vertical plane measured at 1 meter (3.28 feet) above the finished floor

**ANSWER: C**

## QUESTION NO: 11

In a contiguous properly environment (e. g., where campus backbone cables exist), which two of the following are CRITICAL factors to understand for maintenance and growth purposes? (Select two options.)

- A. Fill ratio
- B. Familiarity with the routes and spaces (proper record keeping)
- C. Cable composition
- D. Not able to determine the working capacity versus spare cable capacity
- E. Cost analysis of the value of capex and capex models

**ANSWER: B C**

## QUESTION NO: 12

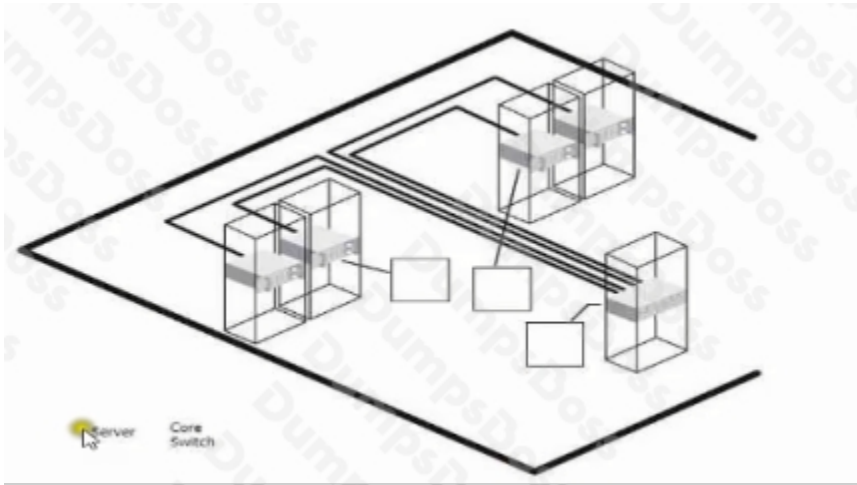
Which two of the following are ADVANTAGES of aerial pathways? (Select two options.)

- A. Quick to install
- B. Has a low initial installation cost
- C. Affect the aesthetic appearance of the property
- D. Economical over a long life
- E. Readily accessible for maintenance

**ANSWER: A E**

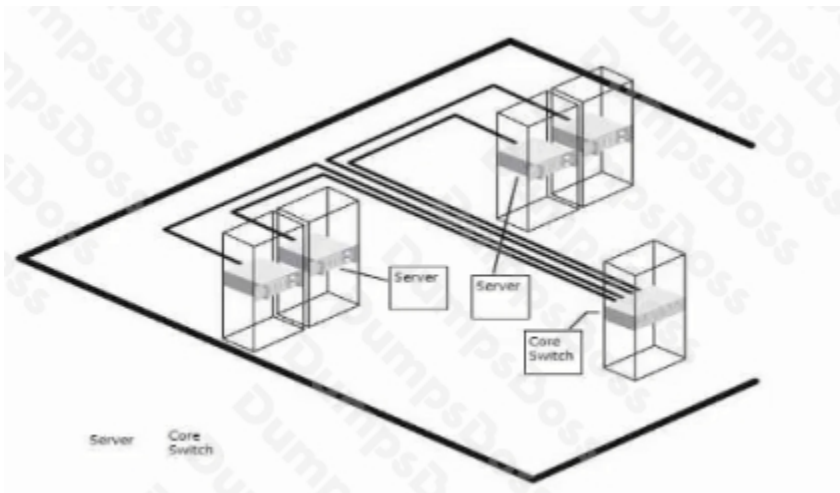
## QUESTION NO: 13 - (DRAG DROP)

Identify the core switch(es) and server(s) of the data center in the diagram below by dragging the appropriate term into each box in the diagram.



**ANSWER:**

**Explanation:**



## QUESTION NO: 14

When preparing an upfront cost estimate, the ICT distribution designer **MUST** consider which two of the following fees? (Select two options.)

- A. Taxes
- B. Permits
- C. Inspection

D. Licensing

E. Safety

**ANSWER: B C**

## QUESTION NO: 15

The program sponsor requests a weekly performance report. The tools and techniques to monitor and control program performance include which of the following?

**A.** Program management performance variances business criteria reweighting, root cause identification, and statistical sampling

**B.** Interviewing, SWOT analysis, run chart and matrix-based charts

**C.** Earned value management financial reporting systems, performance measurement techniques and program management information systems

**D.** Delphi technique, scatter diagram. Pareto chart, and organization charts

**ANSWER: C**