

DUMPSBOSS.

CompTIA A+ Certification Exam: Core 1

CompTIA 220-1201

Version Demo

Total Demo Questions: 15

Total Premium Questions: 240

Buy Premium PDF

<https://dumpsboss.co>

support@dumpsboss.co

support@dumpsboss.co
dumpsboss.co

QUESTION NO: 1

A computer that contains critical data has not been backed up and will not boot past a S. M. A. R. T, error that indicates imminent hard disk failure. Which of the following actions should the technician take FIRST?

- A. Run diagnostics on the faulty hard drive using a boot disk
- B. immediately replace the hard drive generating the SMART error
- C. Turn off S. M. A. R. T, monitoring in the computer's BIOS settings
- D. Attempt to boot the operating system in safe mode

ANSWER: A

QUESTION NO: 2

A technician needs to install a printer on the network. Which of the following must the technician configure? (Select THREE).

- A. PCL
- B. Dots per inch
- C. Gateway
- D. Subnet mask
- E. MAC address
- F. MB
- G. IP address
- H. Drivers

ANSWER: C D G

Explanation:

When installing a printer on a network, the technician must configure the network settings of the printer to ensure that it can communicate with other devices on the network. This includes configuring the gateway, subnet mask and IP address of the printer.

The gateway is the device that connects the local network to other networks or the Internet. The subnet mask is used to determine which part of an IP address represents the network and which part represents individual hosts on that network. The IP address is a unique identifier for each device on a network.

QUESTION NO: 3

Which of the following standards supports MIMO technology?

- A. 802.11a
- B. 802.11b
- C. 802.11g
- D. 802.11n

ANSWER: D

QUESTION NO: 4

A user reboots a machine. On rebooting, the user hears one beep, and then an error message is displayed. Which of the following are MOST likely causing this issue? (Select TWO).

- A. RAM module
- B. Graphics card
- C. CPU
- D. Boot order
- E. USB flash drive
- F. Power supply

ANSWER: A D

QUESTION NO: 5

A user reports that a PC occasionally fails to boot. The user reboots the PC, but the performance is degrading. The technician hears a strange, repetitive, ticking noise coming from the PC. Which of the following should the technician do FIRST?

- A. Try to extract data.
- B. Reseat the RAM modules.
- C. Inspect the fan.
- D. Check the CD tray.

ANSWER: A

Explanation:

This is a safe and sensible option if you value your data more than anything else. You don't want to risk losing your data by trying other methods that may worsen the situation. You can use a software tool or a service provider to recover your data before attempting any repairs.

QUESTION NO: 6

The owner of a restaurant reports that wireless network connections are lost intermittently throughout the day. Which of the following steps should a technician take to troubleshoot the issue? (Select TWO).

- A. Identify the location of devices that utilize 2.4GHz.
- B. Check to see if the phones are IJTP or STP lines.
- C. Test to see if the copper electrical Wires are causing interference.
- D. Map all of the wireless signals in the restaurant.
- E. Verify T568B is being used in the wiring closet patch panel.
- F. Schedule timed router reboots throughout the day.

ANSWER: A D

Explanation:

The correct answers are A. Identify the location of devices that utilize 2.4GHz and D. Map all of the wireless signals in the restaurant. In order to troubleshoot the issue, the technician should first identify the location of devices that utilize the 2.4GHz frequency, as this can cause interference with the wireless signal. Additionally, the technician should map all of the wireless signals in the restaurant in order to identify any potential sources of interference. Checking to see if the phones are IJTP or STP lines, testing to see if the copper electrical wires are causing interference, verifying T568B is being used in the wiring closet patch panel, and scheduling timed router reboots throughout the day are not necessary steps for troubleshooting this issue.

QUESTION NO: 7

A company wants to give third-party developers access to the corporate network through desktop environments that the company can control. Which of the following can BEST achieve these requirements?

- A. Sandbox
- B. VDI
- C. Private cloud
- D. Saas

ANSWER: B

Explanation:

VDI is a technology that allows a company to provide desktop environments to third-party developers while still maintaining control over the corporate network. VDI creates virtual desktops on a remote server, and each user gets their own desktop

environment that is isolated from the other users. This allows the company to maintain control over the corporate network, as the virtual desktops are not directly connected to the corporate network.

QUESTION NO: 8

Which of the following are default ports for HTTP and HTTPS traffic? (Select TWO).

- A. 23
- B. 25
- C. 80
- D. 143
- E. 389
- F. 443

ANSWER: C F

QUESTION NO: 9

A user's desktop computer slows down after a few minutes of use, and the fans alternate between silent and very loud. Which of the following is MOST likely failing, therefore causing these symptoms?

- A. CPU fan
- B. Memory
- C. Power supply
- D. Hard drive

ANSWER: A

Explanation:

A CPU fan is a component that cools down the CPU, which is the main processor of the computer. [If the CPU fan is failing, it can cause the computer to slow down and the fans to alternate between silent and very loud](#)¹². This is because the CPU fan cannot maintain a consistent speed and airflow to keep the CPU at a safe temperature. When the CPU gets too hot, it throttles its performance to avoid overheating, which results in a slower computer. [The other fans in the computer also try to compensate for the lack of cooling from the CPU fan by spinning faster and louder](#)².

QUESTION NO: 10

A user requested upgrades to a company-issued laptop to increase its performance while working with a large database stored on drive C. Which of the following tasks should a systems administrator complete to BEST meet this goal? (Select TWO).

- A. Configure RAID 1.
- B. Install a hybrid drive.
- C. Upgrade to 1GB NIC.
- D. Increase the RAM.
- E. Migrate to a SSD.
- F. Upgrade the power supply.

ANSWER: D E

Explanation:

To increase the performance of a laptop working with a large database stored on drive C, a systems administrator should increase the RAM and migrate to an SSD. Increasing the RAM will help the laptop to better handle the large database, while migrating to an SSD will improve the speed at which the laptop can access the database. Configuring RAID 1, installing a hybrid drive, upgrading to a 1GB NIC, and upgrading the power supply will not directly improve the laptop's performance when working with a large database. References: CompTIA A+ Certification Exam: Core 1 - Objective 3.1

QUESTION NO: 11 - (SIMULATION)

Laura, a customer, has instructed you to configure her home office wireless access point.

She plans to use the wireless network for finances and has requested that the network be setup with the highest encryption possible.

Additionally, Laura knows that her neighbors have wireless networks and wants to ensure that her network is not being interfered with by the other networks.

She requests that the default settings be changed to the following.

Wireless Name: HomeWiFi

Shared Key: CompTIA

Router Password: Secure\$1

Finally, Laura wants to ensure that only her laptop and Smartphone can connect to the network.

Laptop: IP Address 192.168.1.100

Hardware Address: 00:0A:BF:03:C4:54

Smartphone: IP Address 192.168.1.101

Hardware Address: 09:2C:D0:22:3F:11

INSTRUCTIONS

Configure Laura's wireless network using the network adapter window.

If at any time you would like to bring back the initial state of the situation, please click the Reset All button.

Laura's Wireless Configuration

WIRELESS SETUP **NETWORK FILTER** **ADMINISTRATOR TOOLS**

Wireless Network Settings

Enable Wireless:

Wireless Network Name: (Also called the SSID)

Wireless Channel:

Disable SSID Broadcast:

802.11g Only Mode:

Wireless Security Mode

Security Mode:

WPA2

Passphrase:

Confirmed Passphrase:

Laura's House

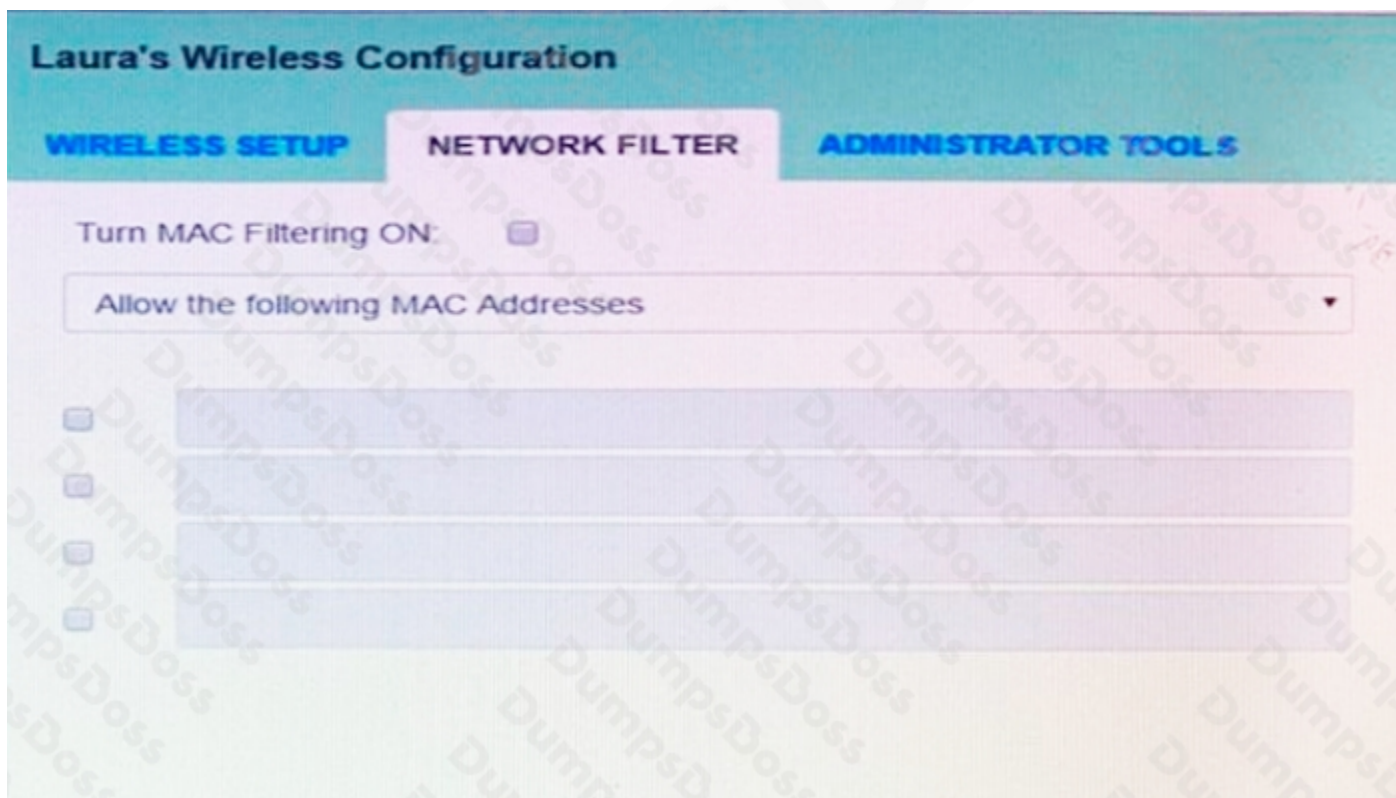
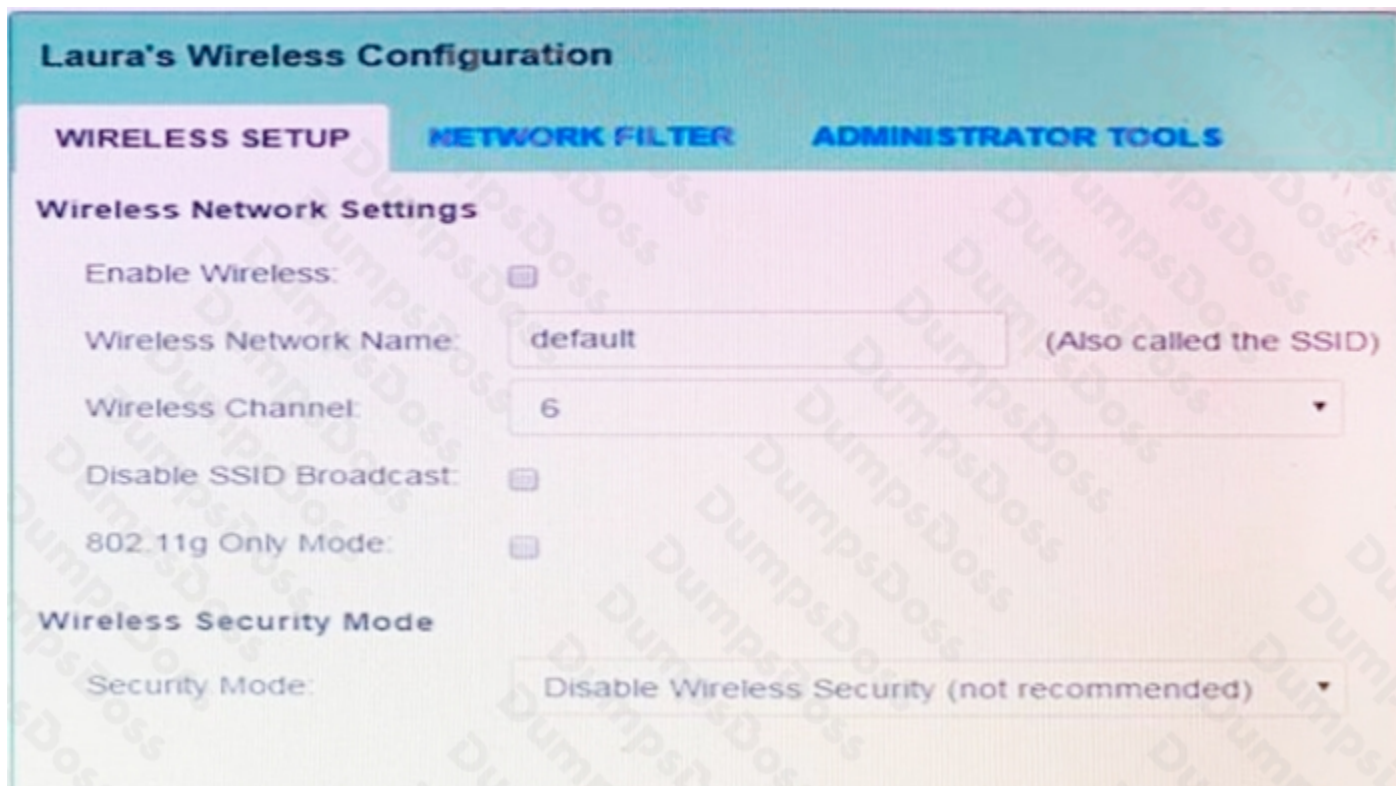
WIRELESS SETUP **NETWORK FILTER** **ADMINISTRATOR TOOLS**

Please enter the same password into both boxes for confirmation.

Password:

Verify Password:

Wireless Network Name	Security Mode	Wireless Channel
Default	Open	11
MyWi	WEP	6
PatsWiFi	WEP	11



ANSWER: Seetheexplanationbelow

Explanation:

solution as



The image shows a 'Wireless Configuration' window with three tabs: 'Wireless Setup', 'Network Filter', and 'Administrator Tools'. The 'Wireless Setup' tab is active. The window is divided into three main sections: 'WIRELESS NETWORK SETTINGS:', 'WIRELESS SECURITY MODE:', and 'WPA2:'. In the 'WIRELESS NETWORK SETTINGS:' section, 'Enable Wireless' is checked, 'Wireless Network Name' is 'HomeWiFi', 'Wireless Channel' is '1', 'Disable SSID Broadcast' is unchecked, and '802.11g Only Mode' is unchecked. In the 'WIRELESS SECURITY MODE:' section, 'Security Mode' is set to 'Enable WPA2 Wireless Security (enhanced)'. In the 'WPA2:' section, both 'Passphrase' and 'Confirmed Passphrase' are 'CompTIA'. A 'Save Settings' button is located at the bottom right.

Wireless Configuration

Wireless Setup Network Filter Administrator Tools

WIRELESS NETWORK SETTINGS:

Enable Wireless:

Wireless Network Name: (Also called the SSID)

Wireless Channel:

Disable SSID Broadcast:

802.11g Only Mode:

WIRELESS SECURITY MODE:

Security Mode:

WPA2:

Passphrase:

Confirmed Passphrase:

Save Settings

Wireless Configuration

Wireless Setup | **Network Filter** | Administrator Tools

Turn MAC Filtering ON

Allow the following MAC Addresses

	MAC Address
<input checked="" type="checkbox"/>	00:0A:BF:03:C4:54
<input checked="" type="checkbox"/>	09:2C:D0:22:3F:11
<input type="checkbox"/>	
<input type="checkbox"/>	

Save Settings



QUESTION NO: 12

A user in a medical office contacts a technician regarding a printer that is used to print A4-sized labels. After the labels are printed, they mistakenly contain white space in the middle of the page. Which of the following would MOST likely be the cause?

- A. Contaminated fuser
- B. Worn rollers
- C. A misfeed
- D. Page orientation

ANSWER: D

Explanation:

The most likely cause of the issue is that the page orientation is incorrect. [The printer may be set to print labels in a different orientation than the orientation of the label sheet1.](#)

QUESTION NO: 13

A technician needs to fix a Cat 5 cable issue. The cable, which is connected to a network jack, fails when it is moved around. Which of the following items must the technician use to fix the issue? (Select TWO).

- A. Scissors
- B. Network tap
- C. Magnetized screwdriver
- D. Tone generator
- E. RJ45 connector
- F. Crimper

ANSWER: E F

Explanation:

To fix a Cat 5 cable issue where the cable fails when it is moved around, the technician would need to use an RJ45 connector (option E) and a crimper (option F). The technician can use the crimper to attach a new RJ45 connector to the end of the cable, which should resolve the issue.

An RJ45 connector (option E) is a type of connector commonly used for Ethernet networking. It is an 8-position, 8-contact (8P8C) modular plug and jack that is used to terminate Cat 5 and other types of twisted pair cables. A crimper (option F) is a tool used to attach connectors to the ends of cables. In this case, the technician would use the crimper to attach a new RJ45 connector to the end of the Cat 5 cable.

When a cable fails when it is moved around, it often indicates that there is a problem with the connector at the end of the cable. By attaching a new RJ45 connector using a crimper, the technician can ensure that the cable has a secure and reliable connection.

QUESTION NO: 14 - (HOTSPOT)

A customer has contacted you about building two new desktops. The first desktop will be a gaming workstation. The customer requirements include:

Playing the newest games at a high frame rate

Fast game load times

Enough storage to have several games installed at once

High-end audio

No concern about cost

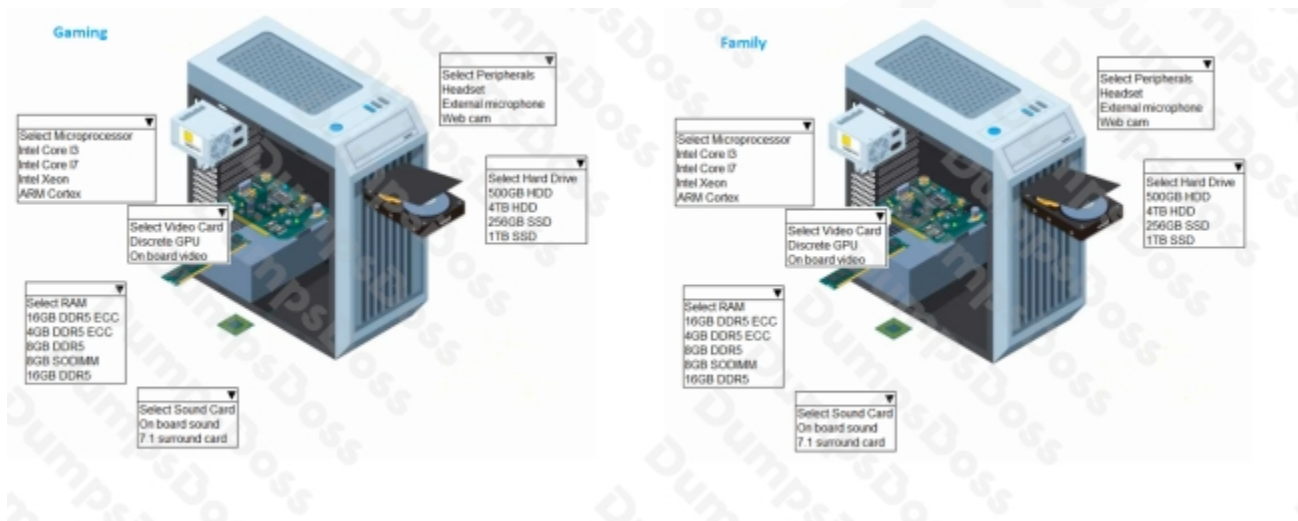
Running the current Windows OS

The second workstation will be a family workstation. The requirements include:

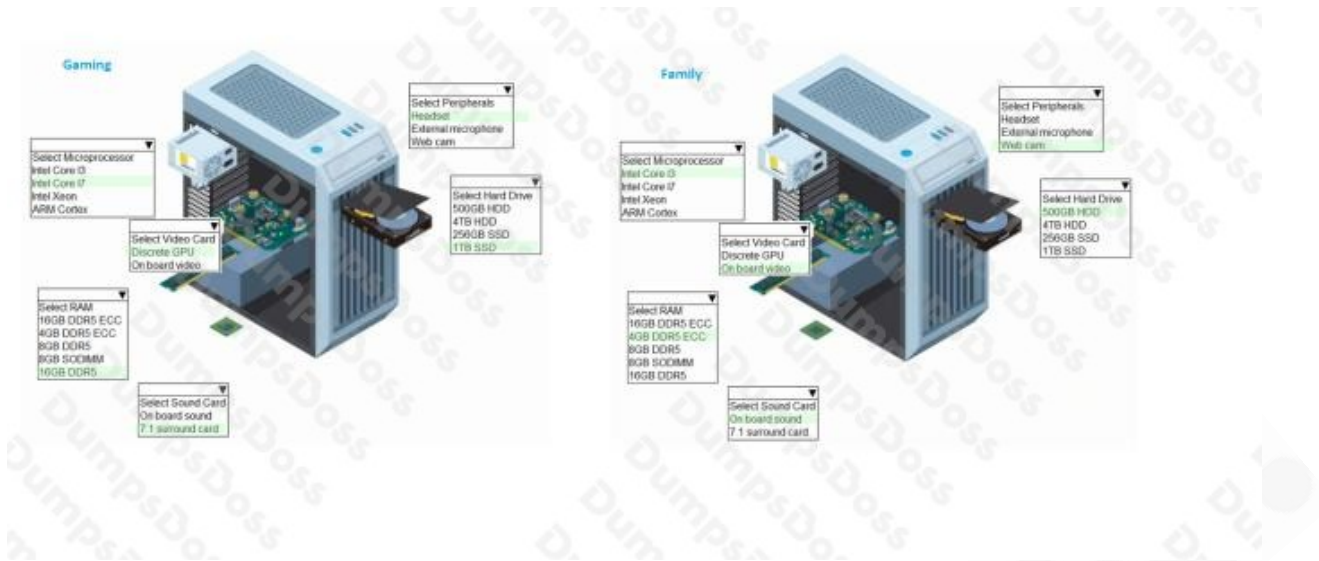
Capability for word processing, videoconferencing, and basic web surfing

Minimal cost, as long as it meets the requirements

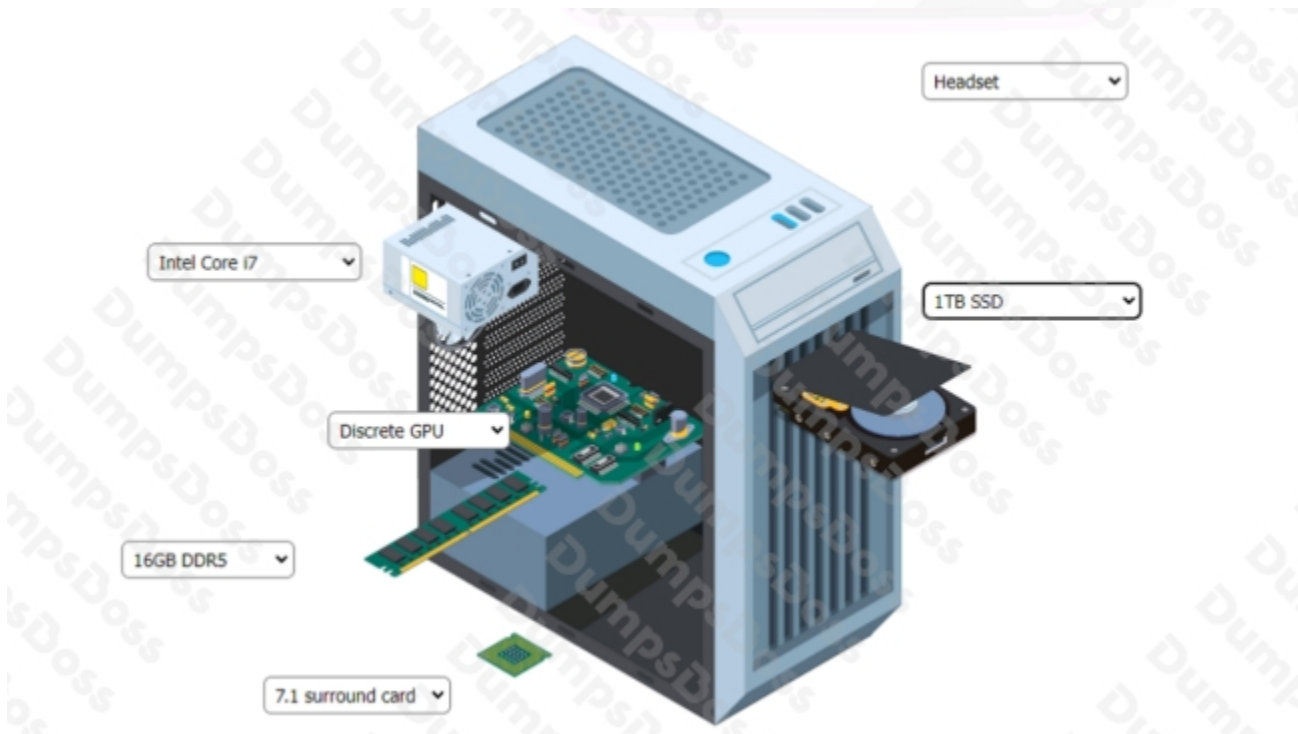
Running the current Windows OS

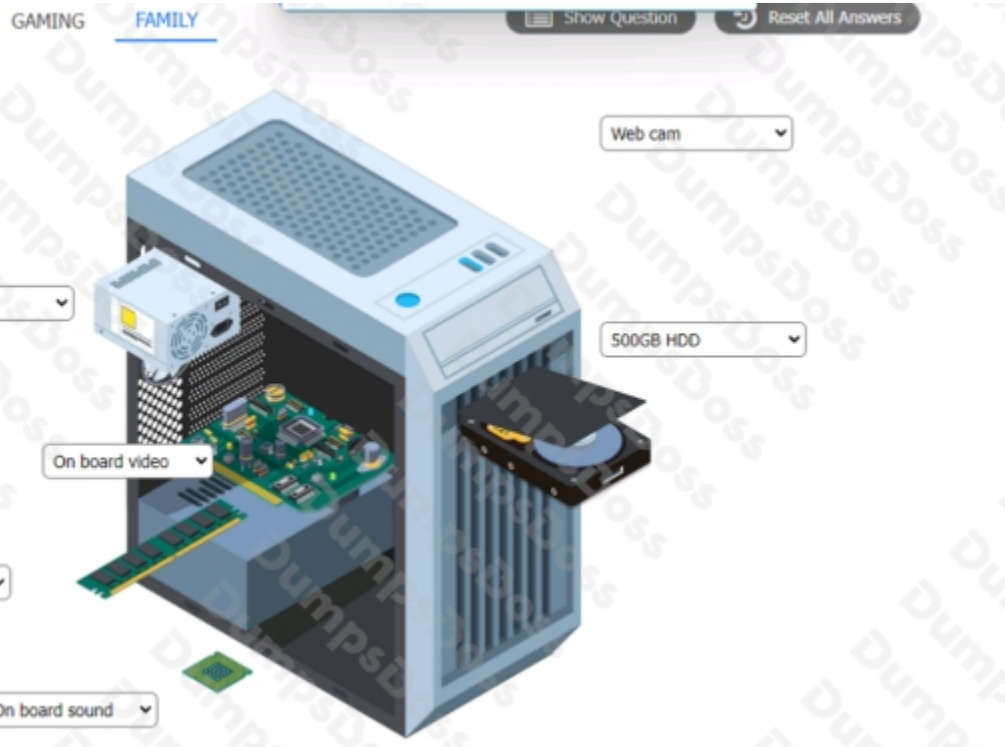


ANSWER:



Explanation:





QUESTION NO: 15

Which of the following is the SAFEST way to replace RAM on a server that has a redundant power supply?

- A. Unplug one power cable.
- B. Verify the RAM temperature.
- C. Utilize a grounding strap.
- D. Replace the RAM while the server is running.

ANSWER: C

Explanation:

Utilizing a grounding strap is the safest way to replace RAM on a server that has a redundant power supply. This is because the grounding strap prevents electrostatic discharge (ESD) when handling the RAM, which can cause damage to the RAM and the server. Therefore, it is important to always use a grounding strap when handling RAM or other sensitive components.