

DUMPSBOSS.

Oracle Business Intelligence Foundation Suite 11g Essentials

Oracle 1z0-591

Version Demo

Total Demo Questions: 10

Total Premium Questions: 120

Buy Premium PDF

<https://dumpsboss.co>

support@dumpsboss.co

support@dumpsboss.co
dumpsboss.co

QUESTION NO: 1

Which two options are included in Oracle BI Server cache management techniques?

- A. Using NQSConfig.ini to manually edit the parameters
- B. Scheduling Server password
- C. Maximum Number of Rows to Download to Excel
- D. Inspecting the cache reports
- E. Manage access to Subject Areas

ANSWER: A D

Explanation:

A: Much of the configuration of OBI that used to be done in the NQSConfig.ini files can now be done using this front end console, which in turns updates the NQSConfig.ini file. Things in the NQSConfig.ini file that are set by EM are noted in the file with '# This Configuration setting is managed by Oracle Business Intelligence Enterprise Manager'. Some things that needs to be setup manually in the NQSConfig.ini file are:

1. Usage Tracking
2. Dynamic Libraries
3. Query Optimization Flags
4. MDX Member Name Cache Section (SAP BW)
5. More specific General Settings where EM doesn't contain the level of detail required

D: Cache Management Techniques include

- Inspecting the cache reports
- Configuring the cache parameters
- Setting caching and cache persistence for tables
- Using the Cache Manager
- Inspecting SQL for cache entries
- Modifying the Cache Manager column display
- Purging the cache entries manually using the Cache Manager
- Purging the cache entries automatically
- Using event polling tables

- Seeding the cache

QUESTION NO: 2

Use of the Enterprise Install option is recommended for which three options?

- A. Multiple instances on a single computer
- B. Scale out for High Availability and Failover
- C. Support for high security requirements
- D. Evaluation of end user functionality
- E. Single users working on a single computer

ANSWER: A B C

Explanation:

Enterprise Install: This installation type assumes some familiarity with Oracle Business Intelligence. All software components are downloaded onto one computer. You can accept the default configuration settings or use your own. You use this installation type when you have an established Oracle WebLogic domain, and you want to extend it to the Oracle Business Intelligence application. This install option is typically used for more advanced deployments with multiple users, such as to scale out a deployment on additional computers.

Incorrect answers:

D, E: Simple Install

The default selection. All software components are downloaded onto one computer and configured with default settings. Oracle Business Intelligence runs after the installation is completed. This install option is typically used for a single user deployment, such as for demonstration or development purposes.

QUESTION NO: 3

Where is Cache in OBIEE located?

- A. In relational database
- B. It is local disk-based.
- C. In dynamic aggregate
- D. In memory cache

ANSWER: B

Explanation:

In OBIEE cache will be stored as files on the Hard Disk of the OBIEE Server in the form of files.

QUESTION NO: 4

A customer has a requirement for rolling period calculations. What two additional steps will need to be done to enable this in the repository?

- A. Clicking the "Time" option in the Logical Dimension Dialog
- B. Designating a chronological key for every level of every dimension hierarchy
- C. Clicking the "Time" option in the Logical Table Source Dialog
- D. Designating a chronological key for every logical column in the Logical Table Source
- E. Specifying a sort order in the Logical Table dialog

ANSWER: A B

Explanation:

Creating Logical Time Dimensions

Compared to modeling an ordinary dimension, the time dimension requires just two additional steps: selecting the Time option in the Logical Dimension dialog, and designating a chronological key for every level of every dimension hierarchy.

Note: Time dimensions and chronological keys. You can identify a dimension as a time dimension. At least one level of a time dimension must have a chronological key. The following is a list of some guidelines you should use when setting up and using time dimensions:

* At least one level of a time dimension must have a chronological key.

* All time series measures using the AGO, TODATE, and PERIODROLLING functions must be on time levels. AGO, TODATE, and PERIODROLLING aggregates are created as derived logical columns.

Reference: Oracle Fusion Middleware Metadata Repository Builder's Guide for Oracle Business Intelligence Enterprise Edition. Working with Logical Dimensions

QUESTION NO: 5

Which two steps are needed to set up Failover support for an OBIEE deployment?

- A. Use Installer to affect Horizontal scale out of an existing instance
- B. Employ WebLogic Enterprise Edition, licensed separately
- C. Use Installer to set up separate single instances, then apply Horizontal scale out clustering
- D. Apply OBIEE Clustering option
- E. Leverage spare hardware capacity of single machine by using Vertical scale out option

ANSWER: A D

Explanation:

Horizontal Scaleout of System Components

* Used for adding additional managed servers (Java components) and system components to an existing cluster

* Used for scalability and failover

* Set up via the Universal Installer > Scale Out BI System option

QUESTION NO: 6

When creating a new dimensional hierarchy in the BI Administration tool, right click the dimension, then select "New Object" What must be selected next?

- A. Logical Key
- B. Parent Level
- C. Child Level
- D. Dynamic Key

ANSWER: B

Explanation:

Steps to Create a Dimension Hierarchy - > Create a dimension object.

Add a parent-level object.

Add child-level objects.

Determine number of elements.

Specify level columns.

Create level keys.

Create a level-based measure.

Create additional level-based measures.

Create share measures.

Create rank measures.

Add measures to Presentation layer. Test share and rank measures.

QUESTION NO: 7

When adding a new dimension to an existing logical table, what is the significance of the Logical Level setting in the Logical Table Source properties?

- A. It defines the granularity of the dimension.
- B. It determines the actual value of the dimension.
- C. It creates a new session variable.
- D. It creates a foreign key relationship.

ANSWER: A

Explanation:

OBIEE - Grain (Level of summarization)

Grain definition in the context of OBIEE.

The following list describes the different grains in navigating a query:

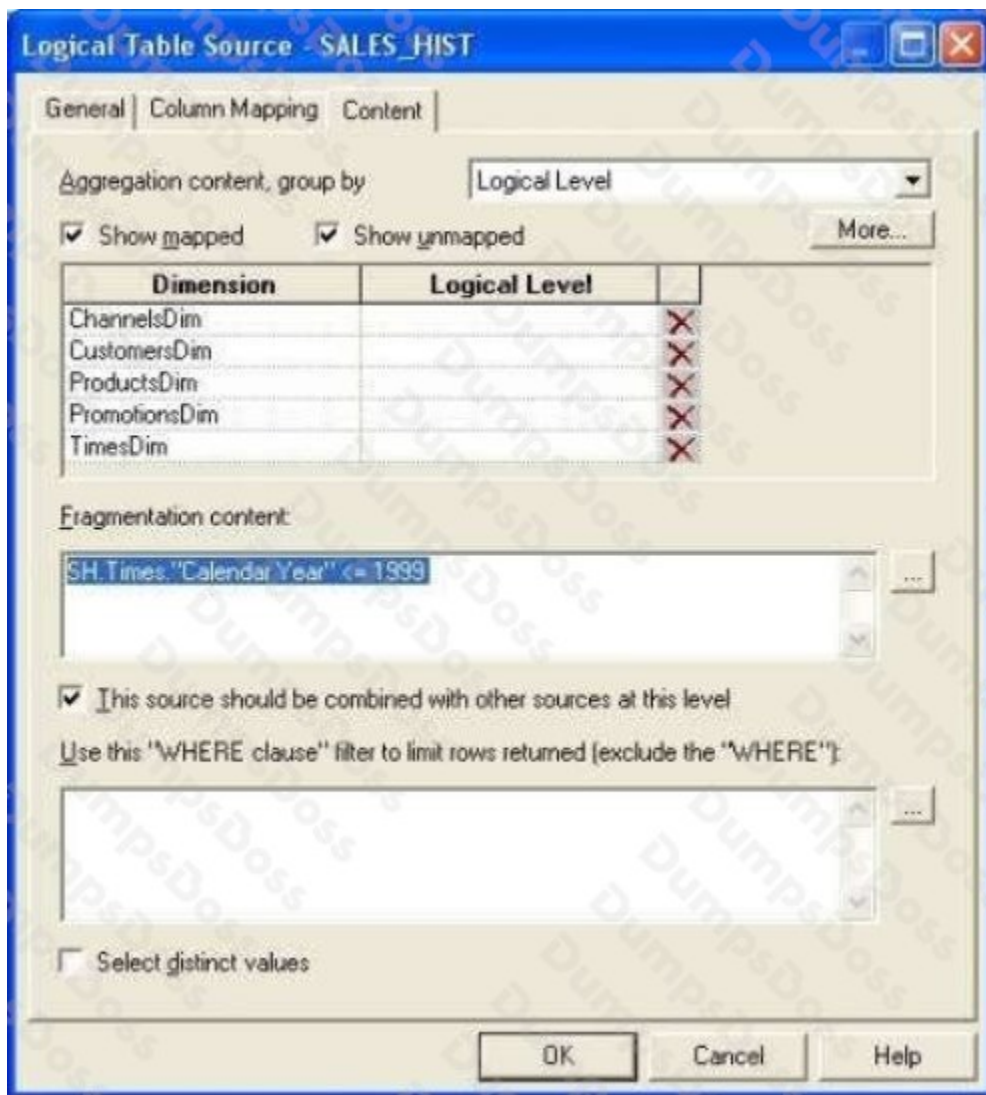
* Aggregation grain. The grain of the aggregate source of from a level based metrics* Query grain. The grain of the request.

* Time Series grain. The grain at which the time series function aggregation is requested.* Storage grain. The query in the example can be computed from daily sales or from monthly sales, or from quarterly sales.

Note:

The aggregation grain is defined in the content tab of the logical table source.

When the query grain match the aggregation grain of a logical table source, this one is used to create the physical query.

**QUESTION NO: 8**

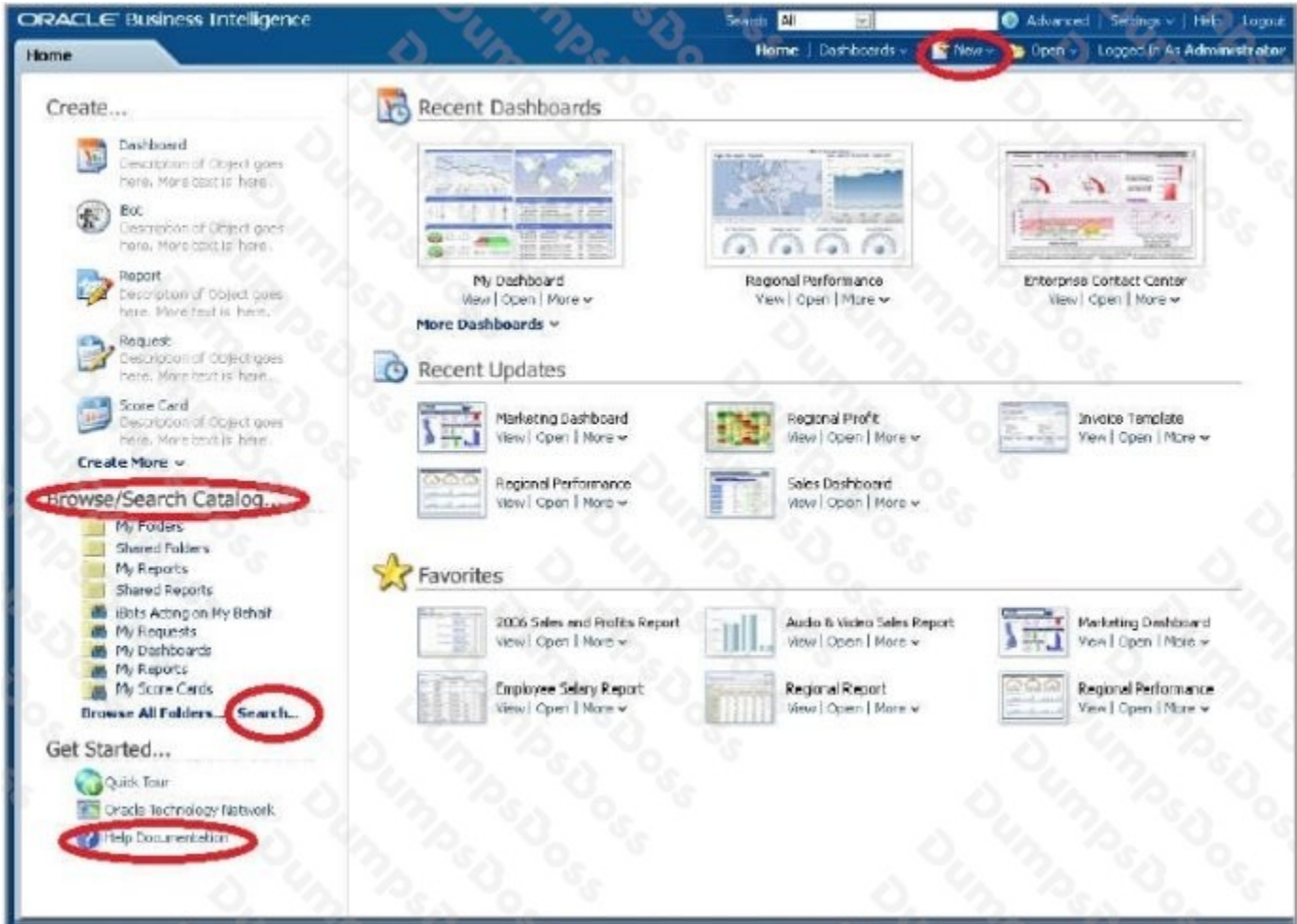
A user's BI Home page provides one-click access to which three options?

- A. Create new content
- B. Oracle BI online documentation
- C. Catalog search functionality
- D. Dashboard layout editor
- E. Business model metadata

ANSWER: A B C

Explanation:

See BI Home Page screenshot below:



Note: The BI Home page contains the BI content catalog. Fusion Apps will use OBIEE web catalog to store all shipped reporting and analytics content.

From the BI home page users can browse and view the entire BI content. The BI catalog folder structure will match the Fusion Apps main menu structure. Folder structure would be content driven not technology driven which would enable ease of navigation for fusion Apps users.

Following content will be available under the BI catalog structure:

BI Publisher Reports (regardless of data source)

OTBI reports & dashboards

OBIA dashboards & scorecards

Financial Reporting

Also, users can do some additional actions from the BI Home page like: Access personal and shared reports, View/ edit BI publisher report schedules, Launch BI tools for advanced actions and create new reports with report wizard.

New reports created can be saved in BI catalog and added as embedded content within Fusion applications screens or links added to reporting pane. This enables users to extend the prebuilt embedded analytics within Fusion Applications.

QUESTION NO: 9

A customer always wants Aggregate Table 1 to be looked at first to see if it can answer the query. What should be done to make sure this happens?

- A. Make Aggregate Table 1 the first table in the list of Logical Table Sources.
- B. Do not map the logical level in the Content tab.
- C. Set the Priority Group to 0.
- D. Set the Priority Group to 5.

ANSWER: C

Explanation:

Priority group

You can set priority group numbers to determine which logical table source should be used for queries for which there is more than one logical table source that can satisfy the requested set of columns.

For example, you might have user queries that can be fulfilled by both a data warehouse and an OLTP source. Often, access to an operational system is “expensive,” while access to a data warehouse is “cheap.” In this situation, you can assign a higher priority to the data warehouse to ensure that all queries are fulfilled by the data warehouse if possible.

Note that the priority group of a given logical table source does not always ensure that a particular query will be fulfilled by that source.

Priority Group Designation

0 the highest-priority source (the default)

1 a lowest-priority source

QUESTION NO: 10

Which of the following native features of Essbase are not supported in OBIEE 11g?

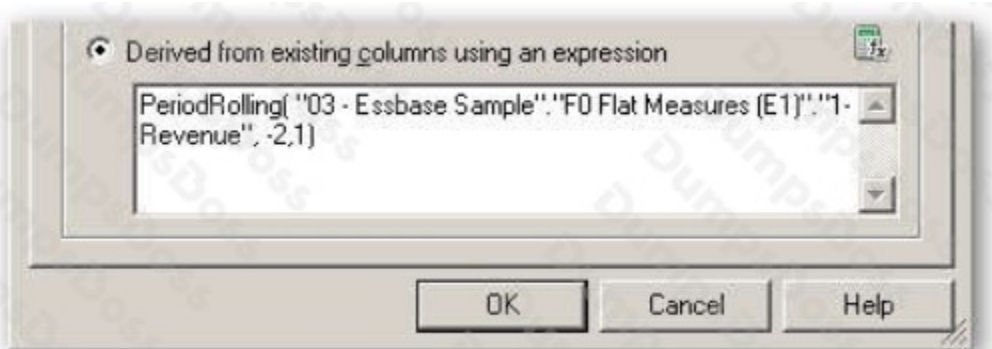
- A. Member Alias
- B. Alternate Hierarchies
- C. Dynamic Time Series
- D. Parent/Child-based Hierarchies

ANSWER: C

Explanation:

If you want to create a dynamic time-series reference such as the value of a measure as at this time last year, or over the past three months, or year-to-date, you can use one of the OBIEE timeseries functions (AGO, PERIODROLLING, TODATE) to provide an offset value for a measure.

Figure:



Note: OBIEE 11g offered a bunch of improvements that were particularly aimed at Essbase, and other OLAP server, customers; the new hierarchical columns feature brought proper OLAP analysis to OBIEE, and coupled with OLAP-oriented features such as hierarchical prompts and selection steps, made OBIEE 11g a much more conducive environment for Essbase users.

There's much better support for Essbase-native features such as value-based hierarchies, alternate hierarchies, multiple alias tables, UDAs and other Essbase artifacts, and the valuebased hierarchy feature in particular is very welcome as it can avoid the need to completely reimport your Essbase database if your outline gains additional hierarchy levels.

So coupled with the new and improved visualization capabilities in OBIEE 11g, including maps, scorecards, improved dashboard controls, the whole new UI, improved BI Publisher and so on, there's a lot to recommend OBIEE 11g to users of the "legacy" Hyperion tools looking for a bit of a refresh of their BI environment.

Incorrect answers:

B: Alternate hierarchies are secondary rollups of members within the same dimension. The level zero members in the alternate hierarchy are called Shared Members, and point back to an identically named real member elsewhere in the dimension.